



Hampshire Field Club & Archaeological Society

Newsletter

No 55, Spring 2011



Limes at Hursley



Battles at Basing House

Archaeology



Historic Buildings



Landscape



Local History



Contents Spring 2011

General editor, Dick Selwood

Landscape (Section editor, George Campbell)

Inhoc and Vetches on the Titchfield Estates	George Watts	1
Field excursion: The New Forest: from Pre-history to the 20th Century	George Campbell	3
Hampshire Lime Woods	Roger Clooney	4
Field Excursion: The medieval and post medieval buildings of the old town centre of Basingstoke	Mike Broderick	6
Book reviews		7

In the back (Dick Selwood)

In the Back	Dick Selwood	7
-------------	--------------	---

Archaeology (Section editor, David Allen)

Editorial	David Allen	8
Rainbow Bar, Hill Head; site of a Lower Palaeolithic stone tool industry. Basing reborn.	Brian Hack	9
Quarley Down Ancient Environs Project: The Laundry Field excavation - Interim note on results from 2007-2009	David Allen	9
Book reviews		11
Exhibition review		12

Historic Buildings (Section editor, Edward Roberts)

A discovery at Park Farmhouse, Little Somborne.	Lisa Jennings	14
The Winchester Houses Of Richard Andrews	Robin Freeman and Richard Preston	15
Book review		18

HFC News

The Field Club has new software	Alison Deveson	19
---------------------------------	----------------	----

Local History (Section editor, Mark Page)

Florence Horatio Nelson Suckling of Highwood, Romsey	Phoebe Merrick	20
In Elm and Oak Country: Gerard Manley Hopkins by the Hamble	David Chun	21
Archives and Local Studies News from Hampshire Record Office	David Rymill	22
Book reviews		25
Identifying their 'Main' Priorities	Malcolm Walford	26

ISSN 0265-9190

Registered Charity No 243773

The Society acknowledges the support of Hampshire County Council

Landscape

Editor: George Campbell, 10 Church Lane, Highfield, Southampton, SO17 1SZ
e-mail: georgecampbell@supanet.com

Several years ago I recall John Pile entitling a lecture on the Forest of Bere, 'Figures in a Landscape'. His purpose was to focus our attention on the changes engineered by man in that forest, which he thought were often overlooked. But it also reminded us of the need for constant attention to what man was or is up to, in the landscape. Archaeologists face this problem when attempting to reconstruct man's activities from chance artefact finds, as exemplified in the New Forest field excursion report (below). George Watts reminds us of how one large scale enclosure of open fields was achieved over a long period in 'imperceptible' stages (below). Today, for someone moving to a new town, there is not only the physical landscape to unravel, but the figures in it; workmates, neighbours, their lifestyles, language and more. The experience of Muriel Beadle's family comes to mind, when she and her husband moved to Oxford from the United States in the 1960s, and began the process of interpreting the arcane ways of the University. One day, while exploring one of the medieval colleges, they inadvertently wandered into that inner sanctum, 'the fellows' garden'. Their small child happened to look up and saw an irate figure gesticulating at one of the windows. 'Hey Pa', he called, 'these ruins are inhabited.'*

This kind of experience is illustrated in Richard Muir's recent book, 'Elegy for the Dales - Nidderdale', briefly reviewed below. It is a detailed record of the changes in Nidderdale wrought by man over the centuries to the most recent, those of the week-enders

and dormitory dwellers taking over the buildings that for centuries were the homes of the Nidderdale village community. So, in a sense these 'ruins' (of a former community) are inhabited, but by individuals with different interests, values and purposes. But is it any different from what Oliver Goldsmith observed in 1760?*

*'But times are altered; trades unfeeling train
Usurp the land and dispossess the swain;
Along the lawn where scatter'd hamlets rose,
Unwieldy wealth and cumbrous pomp repose'.*

Perhaps not, except that in the manner, scale and pace at which man effects change today, we are sometimes taken unawares.

*Ms Beadle recorded her experiences in **These Ruins are Inhabited'** 1961.

Oliver Goldsmith recorded his observations in **The Deserted Village, c.1760.

Postscript

Among the current 'collection displays' at the Southampton Art Gallery is 'The Ordnance Survey in Southampton - Mapping Great Britain since 1791', 11th February - 5th June 2011.

This display celebrates the Ordnance Survey's connection with Southampton since the mid 1800s and their move to new premises in Adanac Park, Southampton, in 2010. The exhibition features a time line display of photographs and important events in the history of our national mapping agency along with a selection of objects from its collection.

Inhoc and Vetches on the Titchfield Estates

George Watts

In 1250, the inhabitants of the villages and hamlets on the Titchfield Abbey estates looked out over a landscape of open fields towards a distant horizon of commons and woodland. In 1750, most of the commons and woodland were still there, but the common fields had been changed into a pattern of separate fields, often, though not always, hedged. The process of change had taken place, not through formal enclosure, but, on most of the manors, through a series of processes, the results of which were often imperceptible to any one generation¹. One of the earliest of such processes was the incursion into the conventional two or three-course rotation of wheat, barley and fallow by the cultivation of some of the strips in the fallow field. On the Titchfield estates this process was most often known as *inhoc*, though it might also be called *inhethe*, *heychinge* or *inheychinge*.

On Titchfield manor itself *inhethe* appears unexpectedly as part of the outcome of a hard-fought dispute between the abbot and his villein tenants in 1271-76². The compromise settlement of 1276 required many of the Titchfield tenants to accept the



Fig.1 Titchfield Abbey properties (boundaries approximate)



Fig.2 Representation of fields south of Titchfield in 1605

burdensome Customs of Meonstoke. But amongst the long list of obligations was what seems to have been a concession – a precise statement of the arrangements for *inhethe*. Tenants were permitted to undertake *inhethe* on one or more acres of the fallow fields at 1d. an acre, the first acre being free. They could grow any crops they wished, wheat, barley and oats being specifically mentioned. *Inhoc* or *inhethe*, then, made it possible for the more energetic (or perhaps the most needy) tenants to plough and sow some of their own strips in the fallow fields, while the other tenants and the lord himself, retained their strips as fallow, with the valuable grazing rights on them.

Titchfield was a large single manor; but at Portchester, arrangements in the fields were complicated by the division of the manor between three landlords. Titchfield Abbey held about two-thirds of the manor, the king one-third, and Southwick Priory a part. A fortunate outcome of the resulting complexity is the survival of two sets of regulations, one for the abbot's tenants, another for the king's³. Some of the abbot's tenants at Portchester could *inhoc* one or more acres, for 2d an acre, (the first being free) twice as much as the tenants of Titchfield and Meonstoke. The king's tenants, whose strips lay side by side with the abbot's tenants, had been given a different arrangement. A tenant of a full villeinage paid a single annual sum of 6d., and the tenants of a half villeinage 3d.

Arrangements such as these at Portchester and Titchfield had profound consequences for the management of the common fields. The village community could no longer agree on a date to plough, harrow or sow in any one field. Neither the lords nor the

tenants in the former fallow fields affected, could release their livestock after the harvest. More regulations had to be made. At Portchester, the tenants who had opted not to cultivate their strips in any one year, could tether their livestock on those strips among the growing crops of their neighbours. Precise dates for various crops were specified, after which the whole field was to be returned to fallow. The tethering of stock was also part of the arrangements for *inhoc* on another of Titchfield Abbey's manors at Inkpen on the Hampshire-Berkshire border⁴. A tenant looking out from such a village would now see not just the corduroy shapes of fields of grain, but a patchwork of fields under various crops, with tethered livestock among them. It was an early stage in the decay of the open fields.

One of the provisions for *inhoc* at Portchester illustrates another of its functions. The king's tenants there were required to grow vetches on the *inhoc* strips; as an inducement, if they failed to produce ten sheaves of vetches from an acre, they would be free of the rent⁵. Vetches and other leguminous crops were sown to provide a winter foodstuff for livestock while at the same time contributing to the fertility of the soil. They were grown on all the Titchfield manors, both by the tenants and the demesne manors in varied soil conditions. In 1381, ten quarters of vetches and peas were amongst the tithes of Titchfield parish, which was on the tertiary soils of the Hampshire Basin⁶. But they were also part of the tithes at Corhampton, among the chalk downland, and of the 'lost' village of Lomer, high above Warnford⁷. At Inkpen, also among downland, vetches, peas and beans were sown annually as part of an irregular rotation system there, and used as a fodder crop. In 1380, for instance, all the beans were used to fatten the pigs, and in 1382 all the vetches were fed in sheaves to the sheep. In 1383, when the vetch harvest failed, vetch seed was sent from Titchfield⁸.

The cultivation of vetches in many parts of eastern and south-eastern England has been extensively discussed by Bruce Campbell and others⁹. It has historical significance not just as a change in farming practice: it contributes to debates about the capacity of medieval farmers to make innovations and maintain soil fertility, and to wider issues about demographic trends and a supposed Malthusian situation in the 14th century. The Titchfield Abbey evidence contributes some interesting detail to these debates.

References:

1. See Chapman J. and Seeliger S. *A Guide to Enclosure in Hampshire 1700-1900*, Hampshire Record Series XV 1997.
2. Watts D.G. 'Peasant Discontent on the Manors of Titchfield Abbey' *HFC Proc.* 39 1983.
3. BL Add 70506, f; PRO SC 11/592. The irregularities in the field system of Portchester have been well described by Julian Munby in ed. Cunliffe B. and Munby J. *Excavations at Portchester Castle* Society of Antiquaries, 1985.
4. BL Add 70506, f. 196b.
5. BL 70506, f. 43b.
6. BL 70506, f. 127b.
7. *Ibid.*
8. Berkshire Record Office M 87-89.
9. ed. Campbell B.M.S. *Before the Black Death*, 1991; Campbell B.M.S. 'the diffusion of vetches in medieval England', *Economic History Review* XLI, 1988.

Field excursion: The New Forest: from Pre-history to the 20th Century - Leader: Frank Green.

George Campbell

This field exploration day was the follow-up to Frank Green's article on the New Forest National Park in Newsletter 51. Its purpose was to discover, identify and interpret some of the humps, bumps and hollows that remain in the New Forest, all evidence of man's imprint on its landscape.

Members assembled at the car park by Eyeworth Pond where Frank outlined the plan for the day, distributing a clip of maps, photographs and text,



Fig. 1 Tom Dommert and the group

and assisted by his colleague, Tom Dommert. He then set it in the wider context of the Park Authority's policies and future programmes, which have been given increased momentum by the Park's inclusion in the European Community's High



Fig.2 Bronze Age mound

Stewardship Level Scheme, which has also opened doors to extra funding. Two recent developments have been: the Park's access to a 34 square kilometre transect of high resolution LIDAR data which is greatly facilitating the location of hitherto unknown archaeological sites; and secondly, its participation in a new

national mapping scheme. Frank's technique was to lead us to a feature, then invite us to attempt explanations, giving us clues to guide our thinking as to what it was. Only then, would he explain what was known about it. In the course of an exciting day of investigation and discovery, we managed to cover no less than fourteen sites ranging from pre-Bronze Age to World War II, gradually reconstructing former landscapes and some of the activities of their inhabitants. Time

and again he would admit that while archaeologists could interpret much from the evidence, the answer to the question 'what purpose did it serve?' still eluded them.



Fig. 3 Bronze Age barrow.

Among the features we visited, the following stand out:

1. A small mound over a pit containing Bronze Age and later pottery and charcoal, at Gorley Buses; one of more than 200 recorded in the Forest. Function unclear. (Fig. 2)

2. A Bronze Age barrow, which, like the previous mound showed signs of systematic excavation, probably by an early archaeologist, John Wise, in the

mid 19th century. (Fig. 3)

3. A medieval charcoal pit; a roughly circular shallow depression several metres across, where Frank used the opportunity to describe the history and decline of the Forest's charcoal industry. (Fig. 4)

4. A 'light point', relic of World War II, revealed by evidence of modern brickwork and electric cable; its purpose, whether to guide returning aircraft or as a decoy to mislead enemy aircraft, is not known.

5. One of a number of Bronze Age boiling mounds visited, showing differing degrees of preservation. The uses to which the boiled water could be put were limitless! Frank paid tribute to the pioneer work of Anthony Pasmore in locating and interpreting the history of these features. (Fig.5)



Fig.5 Frank addressing the group; Bronze Age boiling mound behind him

6. The Schultze Gunpowder Factory site, of which only the stable block and the dome shaped fuel store remain of the original buildings. However, its water supply, the attractive Eyeworth Pond impounded by the factory, and its sluice, with its stepped stone floor to reduce the rate of flow and promote sedimentation, still remain. (Fig. 6)

The day concluded with a visit to the Fritham Chapel where Mrs Bright had arranged a small exhibition of photographs and plans of the Gunpowder Factory on which she is an authority, and gave a short talk. Her husband, as chairman of the chapel trust, followed with an outline of the chapel's history.

Overall, an exhilarating day, efficiently organised and superbly conducted by Frank who generously shared his extensive knowledge of the Forest with his usual enthusiasm and humour, and at the same time made us think about what we had found. During the morning he conducted us at a smart pace over several miles to eight sites, and yet with split second timing got us to the Royal Oak for lunch at 12:30, exactly when we were expected. Another achievement!



Fig.4 Medieval charcoal pit.



Fig. 6 The Gunpowder Factory sluice.

Hampshire Lime Woods

Roger Clooney

Introduction

In the 1980/90s, the Nature Conservancy coordinated a survey of the ancient woodland of the UK. John Rowe, one of the botanists involved in the Hampshire survey, recorded a large population of small-leaved lime *Tilia cordata* at Ampfield Wood to the west of Winchester (SU410245). This short article represents an historical background to the Ampfield site with special reference to those limes.

T cordata is a scarce tree in England, on the edge of its global range. Research over the last thirty years by George Peterken, Donald Pigott and Oliver Rackham¹ indicates that when lime is found in woodland it may have been there for a very considerable time. These lime woods may therefore represent an important link with Hampshire's wildwood.

The Ampfield Limes

The modern Ampfield Wood is composed of plantations on a mosaic of ancient woodland, wood pasture and parkland. The eastern end of the complex covers the SW corner of the medieval Merdon Park and its Outpark, one of the oldest deer parks in Hampshire. In a 12th century Charter² Bishop Henry de Blois (1129-1171) declares that he has restored to the Priory those lands which at the time of his consecration were in their tenure for its support. So, if this is correct, the park was in existence in the early 12th century in the estate of Chilcomb.



Limes at Hursley

While some early Winchester charters are considered unreliable, the size of the park pale at Merdon indicate a park of some antiquity. Crawford³ makes special mention of the size of the Merdon park banks and laments that they were 'not marked on the map' (an omission corrected in the modern OS map, fig 3). Hase⁴ suggests that at the time of the Domesday Inquisition, Hursley (with Merdon) was part of the landholding of Chilcomb. The de Blois charter would seem to confirm this.

References to the park occur regularly in the pipe rolls of the Bishopric of Winchester⁵. In the *Meredona* entry for the pipe roll of 1208/9⁶; there is listed *j parcarii* (one parker) and also possibly as evidence of the wildness of the area, *In devoratis a lupis ij pulli*; (wolves as having taken two colts). The Outpark appears to be mentioned several times in the 13th century Close Rolls (*extra parcum*) as a source of oak timber for Winchester Castle:

22 Henry III m5 1238 *De quercubus datis - Mandatum et Paulino Peyore et Thome de Newere quod in bosco de Mereden' a' extra parcum faciant habere vicecomiti Suhamt' xx quercus ad operationes castri Wintonie. Testa et Supra*

22 Henry III m7 1238 *De quercubus datis - Mandatum est P Peyor' et Thomas de Newere' quod faciant habere vicecomiti Suhamt' x quercus in bosco de Meredon' extra parcum ad faciendum inde pontem turneicum extra portem castri Wintonie. Testa et Supra*

A map of 1588⁷ (extract shown in fig1) shows the Park, Outpark and areas of pasture/arable/coppice as islands in a sea of waste. A survey⁸ associated with this map, presents details of 'The Park and The Outpark' under the 'Demaynes' of the manor, and 'The Common called the Outwood' as part of the Lord's Waste. The map shows that the main park was compartmentalised into launds and coppices whilst the Outpark is an undivided block of woodland within a separate enclosure.

In a document of 1707⁹ presenting the Customs of the manor of Merdon as claimed in a dispute with Oliver Cromwell, there are some interesting insights into the management of the common woodland:

And that the Ancient Customary Tenants (except those who had Purpresture Lands) had and ought to have, the sole Pasture and Feeding of the Lords Heaths and Wastes at all times for their Cattel Levant and Couchant on their Copyholds and to Common and Feed there without Number or Stint, with all their said Cattle, and all the Furzes and Bushes growing in the said Waste or Commons, and Acorns when fallen from the Trees of the said Customary Tenants.

And that there are three Coppices viz. South Holmes, Heale Coppice and Holman Coppice, about 60 acres, wherein the said Copyholders have Right of Feeding, for all their said Cattle, and to

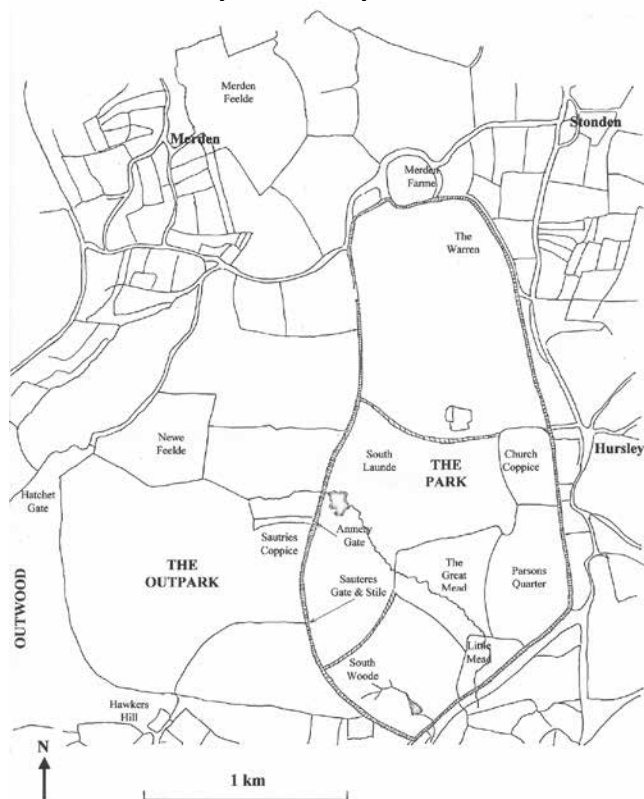


Fig.1 Merdon Park and Outpark 1588

the Mast there, only when the said Coppices were cutt, the Lords of the Manor used and ought to cut these all together and fence them in, and keep up the Fences seven years after the cutting, to keep out the Cattle, and then to lay them open again, and if in the mean time, there were any Mast, the Customary Tenants were to have the benefit of the same, and the Feed after seven years expired after the cutting.

Access to rough grazing and pannage in the autumn were vital to the tenants of the manor.

The Park and Outpark are not mentioned in the customal. Heale, South Holmes and Holman Coppice appear to have survived to the time of the Tithe Survey¹⁰ (see table 1 and fig 2) as Hele, South Home and Homing respectively. The main tithe plots covered by the modern Ampfield wood are 686, 820 and 601 – 606. The only section of the SW Merdon Park pale recorded as a boundary on the map is 'The Deers Leap', plot 811.

The distribution of the lime found by John Rowe is shown in fig 3 with over 95% located in the Outpark. The survival of the large quantity of *T. cordata* indicates that Outpark was enclosed against grazing, evidently for the protection of timber. Lime is not considered to be a timber tree, so whether it was conserved for other purposes or is a fortunate co-survivor, has yet to be determined.

Only a handful of lime stools were found outside the Outpark, three in the Outwood and four in the main park (three of the latter being just over the Outpark boundary). No limes have been found in Hele, South Home or Homing coppices to date. This is consistent with *cordata* being suppressed /eliminated in grazed wood pasture. The Outpark limes must have been protected from grazing from an early date and were probably extant before the enclosure of the parks. Further evidence of the lack of grazing is the presence of one of the largest populations in Hampshire of *Luzula sylvatica*, Great Wood-rush¹¹.

In fig 3 there appears to be a discontinuity in the distribution of the lime in the NW corner of the Outpark. The Tithe Survey offers a possible explanation. In the map the Outpark is lumped together with the SW corner of Hursley Park and Portland Coppice as Anfield Coppice (fig 2, plot 820) and the NW corner as plots 571, 572, 599, and 601 – 606. Plot 603 is revealingly named Grubbed Ground, as are all the surrounding plots. It would seem therefore that 17/18th century brick-makers (evidenced by the kiln in table 1) may have done a more thorough job in eliminating lime than their modern counterparts. (Knapp is shown for reference on fig 2: the name does not appear on the tithe map).

The Future

T. cordata has a fragmented distribution in the UK. The Merdon Outpark limes probably represent survivors from before the Neolithic land clearance. As such their occurrence represents as important an element in the history of the landscape as any archaeological deposit or feature. The genetic fingerprinting of lime populations is in its infancy, but in the

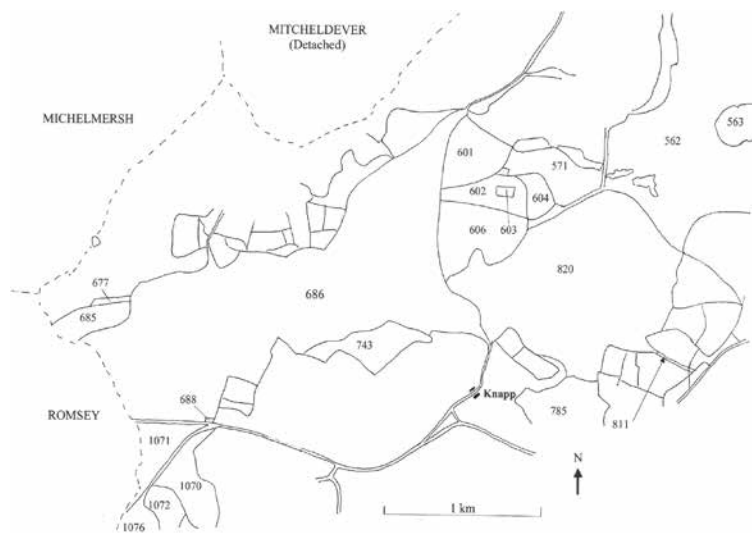


Fig.2 Ampfield Wood as depicted on Hursley Tithe Map

Table 1: Tithe Return Entries for the Ampfield Wood area of Hursley Parish			acres	roods	perches
562	Hursley Park	pasture	401	2	0
563	Mansion Office & Garden		14	2	0
571	Penfold Meads pasture	pasture	25	0	0
601	Great Grubbed Ground	plantation	28	1	8
602	Little Grubbed Ground	plantation	17	1	22
603	Grubbed Ground Brick Kiln	grounds	2	0	0
604	Round Coppice	wood	8	1	0
606	Grubbed Ground Coppice	wood	41	0	15
677	Hele Coppice Piece	wood	2	0	13
685	Hele Coppice	wood	20	0	11
686	The Out Wood	wood	431	0	0
688	The Outwood Lodge & Garden		0	0	30
743	Homing Copse	wood	26	1	19
785	Newells Coppice	wood	42	2	19
811	The Deers Leap		0	2	5
820	Anfield Coppice	wood	240	3	25
1070	South Home Wood	wood	34	0	32
1071	Anfield Wood	wood	26	3	10
1072	South Home Coppice	wood	25	3	20
1076	South Home Wood	wood	33	0	10

next few years this could confirm the relict / isolate nature of these populations.

The Outpark is being managed sympathetically by the Forestry Commission for the Hursley estate, with valuable work being performed by students from Sparsholt College. It is hoped that by restoring coppicing with "singling" to promote flowering/seedlings (12), the lime can be preserved for at least another 1000 years! Crawford noted that the park pale earthworks had suffered damage from military activities. Given the Forestry Commission's commitment to preserving archaeological features on its sites, steps should be taken to protect them from further damage.

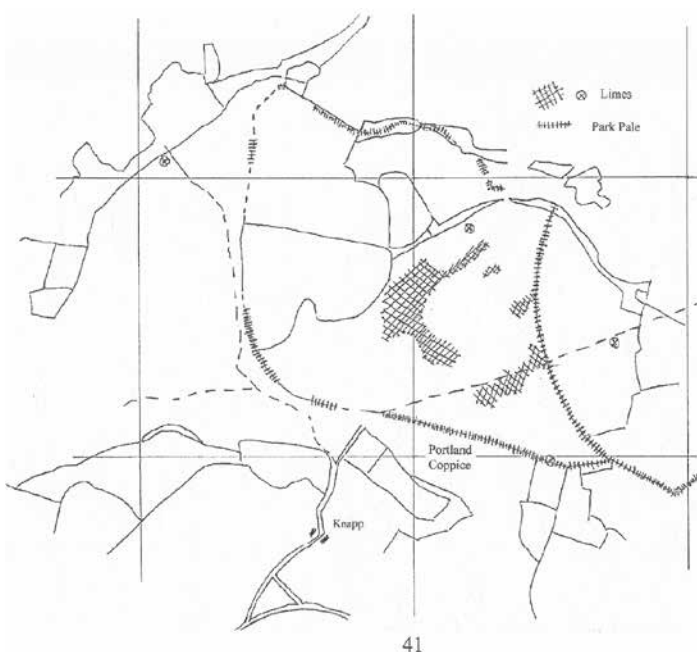


Fig. 3 Location of Limes and Outpark Pale earthworks on modern 1:25000 map (SU 42)

References

- 1 – There are several useful references, the more important are listed in Note 1 below.
- 2 – Deedes, C. (1924) - *Registrum Johannis de Pontissara – Episcopi Wyntoniensis – Canterbury & York Society* XXX, 626
- 3 – Crawford, O.G.S. (1953) – *Archaeology in the Field*
- 4 – HRO: Thesis 19 Hase, P.H. (1975); PhD Trinity Coll. Camb - Development of the Parish in 11th /12th century Hampshire
- 5 – Roberts, E. (1988) – Bishop of Winchester’s Deer Parks in Hampshire Proc. HFC 44 67-86
- 6 – Hubert Hall (1903) – Pipe Roll of the Bishopric of Winchester 1208-1209 LSE
- 7 - HRO: COPY390
- 8 – HRO: 63M84/46
- 9 – HRO: 100M99/A20/3
- 10 – HRO: 21M65/F7/124 – Tithe Survey Hursley, 1839
- 11 – John Rowe - personal communication
- 12 - Donald Pigott - personal communication

Note 1: References concerning *Tilia cordata* as a component of Ancient Woodland

- Peterken, G. F. (1981). *Woodland Conservation and Management*
- Pigott, C. D. (1969). The status of *Tilia cordata* and *T. platyphyllos* on the Derbyshire limestone, *Journal of Ecology* 57, 491-504
- Pigott, C. D. (1991). *Tilia cordata* Miller Biological Flora of the British Isles No 174. *Journal of Ecology* 79, 1147-1207
- Rackham, O. (2003) – *Ancient Woodland: its history, vegetation and uses in England*

Field Excursion: The medieval and post medieval buildings of the old town centre of Basingstoke, Sunday 11th July 2010 - Leader: Bill Fergie Mike Broderick

This field excursion was planned as a follow-up to Bill Fergie’s lecture on some ‘Early Surviving Buildings of the North Hampshire Towns’ delivered at the 2009 Landscape Section’s Conference. Having been introduced to the buildings in the lecture, now was our opportunity to see them in the present Basingstoke townscape, guided by someone who has known and worked in the area for many years.

The visit began outside the main west entrance of St. Michael’s church though access to the interior was not possible as a service was in progress. The chancel is the oldest part being largely rebuilt in the 1460s. The late perpendicular style nave and aisles were completed about 1520 and the porch was added in 1539. Damage, caused by bombs falling on 16 August 1940, can still be seen on the outside of the eastern wall.

Next on the trip was Church Cottage, to be found opposite the west door. It is Basingstoke’s most important surviving timber framed house. Bill explained the long and complicated history of the building including the ‘barn’, which is an aisled room with possible evidence for some type of agricultural or industrial use. A short walk northward along Lower Church Street allowed a view of number 8, a brick built house from the time of James I; the north gable has some highly decorated brickwork.

The walk then continued southwards, up Church Street, to the Market Square where Winchester Street, from the west, meets up with London Street, from the east. Bill explained the importance of this east-west axis as a site for coaching inns and gave some examples of lost

and existing buildings that were in the trade: The George (now Zizzi’s near MacDonalds), The Red Lion (on London Street) and The Feathers (now Laarsen’s on Wote Street). The way in which buildings had their frontages altered to hide their medieval origins was a theme of this part of the walk. One way in which medieval facades were disguised was by the use of so-called ‘mathematical tiles’; Sketchley’s dry cleaners has rows of them above the main window on Winchester Street. The author first became aware of this when work was being done to re-hang the tiles. From Winchester Street the route went eastwards to the end of London Street where the Deane’s Almshouses are situated. These almshouses were endowed in 1608 and have therefore recently celebrated their 400th anniversary. They are still in use. The final point of the walk was ‘Goldings’ a small group of buildings which is thought to have started life about 1600 as a pair of simple timber framed houses. The western house retains much of its original wooden structure, which is in evidence in the west gable wall. The eastern house has a much more complicated history, with later additions and alterations, including new windows and, on the London Road frontage, the use of yellow mathematical tiles.

The walk showed how, even in a vastly altered town like Basingstoke, there are still many buildings with features dating back to the medieval and post medieval periods.

Sources:

- Town Trail – Basingstoke Heritage Society (The booklet provides the route for a self-guided tour of the central area.)
- Notes provided by Bill Fergie.

book reviews book reviews book reviews book reviews book reviews

Richard Muir, *Elegy for the Dales – Nidderdale*, The History Press, 2010; pp. 256, £14.99.

This is the most recent publication of this distinguished landscape historian: the study of a village community intimately known to him, viewed in the wider context of the Yorkshire Dales. It is original in its approach, in that it is transparently a personal odyssey, yet firmly grounded in objective research. Each chapter covers a period between c.10000 BC and the present, and incorporates a 'vignette': a close study of how events of a particular time impacted on the lives of ordinary people. The many photographs selected to illustrate significant

features are all appropriately annotated.

His writing style, choice of words and flow, and his ability to reach the heart and mind of the reader, makes it hard to believe that this book was born of a collection of disparate notes. Thomas Gray would have reviewed this elegy with approval, as being much in the spirit of his. It is an elegy, but one that contains the seeds of its rebirth. And what gives this one such force and wider appeal is not simply that it is the record of one rural community, it speaks for all rural communities. And as Goldsmith reminds us (see Editorial, above) this is not a new phenomenon.

George Campbell

In the back

General Editor: Dick Selwood, 34 North View, Winchester, SO22 5EH

Email: newsletter@ntcom.co.uk

Although we are normally physically the last item in the newsletter, this issue we have come much further forward. This is, in part, to meet the mechanical demands of fitting the material of four different sections into the framework of the pages. And partly so that we can reproduce at a reasonable scale the chart and map that accompanies another of Malcolm Walford's magisterial articles on the development of Hampshire roads.

Spitfires, memory and history

On March 5th 2011, a Spitfire flew from Eastleigh Airport to commemorate the first test flight, exactly 75 years earlier. As well as recreating the wheels-down circuit around the airport, it also flew down the Itchen and then, twice, up and down the Solent. I watched it from Mayflower Park where despite a bitterly cold and grey day there was quite a crowd. Few had even been born when the Spitfire was withdrawn from operations in the late 1950s. Yet later in the day we met a woman who had seen the Battle of Britain. For most of the people in Mayflower Park, the Spitfire was flying out of history. For the woman we spoke to, it was a part of her life: not history but memory.

Is this, perhaps a definition of history – the things that happened before you were born? In which case, for most people the origins of Mayflower Park are as historic as the Southampton city walls to the north-west of it. But it is of the same age as the Spitfire, since it was created by reclamation as part of the Southampton development of the 1930s.

This corner of Southampton is a strange mix of old, fifties and sixties and then aggressively modern. Within five minutes are the Tudor House Museum and Garden, the Wool House Maritime Museum, where you will again meet the crossover between memory and history, God's House Tower with the archaeological museum, and God's House itself, a rather sad Victorian rebuild of the medieval hospital. Against the city walls is the Pilgrim Father's memorial, and a little further, Canute's Palace. You need to disentangle this from the post-war (that is post-World War II) redevelopment, much of it of not terribly high quality. (What was the thinking behind the tower block on the castle site?) And you also have to



look hard to disentangle history from West Quay and the huge modern sheds of the shopping buildings on the old Pirelli factory site. This whole area is a tangle between your history and my memory. Does history include the Americans embarking for the invasion of France in June 1944, alongside the Mulberry harbours and the acres of reclaimed land for launching and loading landing craft? Or is it limited to Jane Austen visiting the Georgian Spa? And the French burning the town in 1338? And the Saxon traders in Hamwic? This is a personal choice.

That we can still see so much history and read about it, despite the ravages of town planners, bombers, and raiding Frenchmen and Vikings, is due to the work of historians, archivists, archaeologists and museum curators. We know that these services have been under pressure for some years now, but as David Allen points out in his editorial, the pressures are greater than ever in both local authorities and in universities.

With what seems to be the inevitable culling of these valuable people, the work of the amateurs in the Field Club is going to be even more important in future.

Dick Selwood

Archaeology

Editor: David Allen, c/o Museums & Archive Service, Chilcomb House, Bar End, Winchester, SO23 8RD
tel (01962) 826738; email: musmda@hants.gov.uk

After taking a breather while the Basing House project was in production, the archaeology news section is back. Having said that, there's still a need for contributions from a wider range of sources, so if you've conducted an excavation (done a dig) or examined a particular ancient landscape or group of archaeological material (done a bit of research) do get in touch. These pages could be the very place for you or your group to tell the world about what you've been up to.

In some ways the Museums Service, where the Field Club Council currently meet and where we find room for the stock of HFC publications and other bits and pieces, is making the news this season. A root and branch review, occasioned by the dire economic situation the country is in, will see a 25% cut in staff numbers, and for 'Collections Care' staff the figure will be nearer 50%. Alan Jacobs, who made an excellent contribution as Collections Manager (Archaeology) has already headed off to Essex, where he will be a Finds Specialist for the County Archaeology Unit, and Alan Turton, Manager of Basing House, will be hanging up his hat in June.

The Hampshire Museums Service is heading for a streamlined Collections team, with four Keepers and six or seven Collections Assistants, geared towards a more generic delivery of their skills. Other significant changes will come at Rockbourne Roman Villa, Alton Museum and Allen Gallery and Bursledon Windmill, where the emphasis will be on local management. A key aspect of recent years has been the volunteers who have helped out at Chilcomb House, Winchester - Museum headquarters. It is vital that this sort of assistance continues and THURSDAYS have been identified as volunteer days. Do get in touch if you think you can lend a hand.

S. O. S.

One of the things the volunteers grapple with is old archives and a current phenomenon of the County's archaeological archives is the appearance of distinguished archaeologists of (and I'm sure they won't mind me saying) advancing years sorting through rolls of plans, sheaves of photographs and boxes of finds, as they write up major excavations of the 1960s and 70s. The recurrent theme is easy to grasp. A research project, taken on early in a career, is put on hold as work and life commitments demand attention elsewhere, and the post-excavation process, substantial in its nature, has no resources to keep it ticking along. When time does become available, on retirement, to complete the magnum opus, the cost of engaging specialist help, with reports and drawings etc., is considerable, and the task momentous.

Sparsholt Roman villa was excavated by David Johnston and some of the finds feature in the Winchester City Museum displays. David also made good use of the site in his Shire Archaeology book on villas, including plans and pictures of a model he made. The site is complex and has Iron Age occupation indicated by a ditched enclosure, pits and burial, a substantial 3rd-4th century phase and an apparently later timber hall located outside the villa courtyard. Work is well

underway, with the HFC having joined the County Council, City Museum and others in providing financial and other help, but there's still a lot to do and more resources are required. The costs of actual publication or dissemination are in hand, thanks to English Heritage.

Owslebury, excavated by John Collis between 1962 and 1972, featured in these pages a year ago when John described the key aspects of the site and some of the vicissitudes that have beset the archive. John is a regular visitor to the stores, dropping off one consignment of pottery or animal bone and collecting another (the detailed work mostly takes place in Sheffield). There's still a lot to do, but a recent development is that some of the animal bone material may be included in a wider European initiative that is interested in comparative studies.

Selborne Priory is being tackled by David Baker, for many years County Archaeology Officer for Bedfordshire. Back in the 1970s he took on the task of 'rescuing' and tidying up the Selborne excavations at the suggestion of Professor Barry Cunliffe, and is moving forward with the final report on many fronts. Once again, the Field Club has been able to offer some assistance and David is looking for additional funds for specialist work, as English Heritage is again willing to find the actual publication costs. The priory is an important site. Founded in 1233 by Peter des Roches, Bishop of Winchester, the original Augustinian foundation was for 14 canons but by the mid 15th century this number had fallen to just four and the priory was in serious debt. On 2 September, 1484, Bishop Waynfflete appointed a commission for the annexing of the priory to Magdalen College, Oxford. This found that there were no canons in residence and the buildings were dilapidated. Although this was the death knell for the establishment, the link meant that the surviving muniments are one of the most complete sets for any religious house in the country. The great challenge and opportunity is to use this documentary material alongside the testimony of the spade.

If anyone has any bright ideas about how these projects can be helped forward or how they can attract more resources we would be very pleased to hear about it.

Solent-Thames Research Framework

Mary Oliver has drawn my attention to a very useful link. HFC members may recall a conference about the Solent-Thames Research Framework a few years back. The overview of archaeology of the area is now complete and available on-line. It's a very useful summary of the current state of knowledge, drawn up by leading practitioners in the various time periods. The web-site is straightforward to navigate and Hampshire information easy to find. The address is <http://thehumanjourney.net/index.php?option+com+follow+Projects+and+Solent-Thames>.

This is a very economical way of getting up-to-date information disseminated, and should be a useful research tool.

It is sixty years since the late Chris Draper first wrote about flint tool finds from Rainbow Bar, Hill Head, and eleven since the Lithics Society held their Palaeolithic

Archaeology of the Solent River day conference at the University of Southampton. This gathering stressed the fragility of the Lower Palaeolithic resource and hoped that those responsible for its conservation would bear that in mind. One man who is always reminding me that it's a worthy cause is Brian Hack and I include his most recent note. It does look as if the hectare (size of an international

rugby pitch) of Rainbow Bar is changing with time, which is not surprising. Brian is now 82 and no longer able to visit the site himself – it needs another champion.

Back on dry land we visit Quarley Down and Basing House. Books are reviewed and noted...as is The Forgotten Emperor exhibition.

David Allen musmda@hants.gov.uk

Rainbow Bar, Hill Head; site of a Lower Palaeolithic stone tool industry.

Brian Hack

In 1950 Chris Draper chanced on a discovery which even now, after 60 years, remains a mystery. On one of his visits to the local coastline he noticed and picked up a stone tool. Draper was a well-known and respected local amateur archaeologist and the knowledge he had gleaned through his studies of the prehistoric Stone Age periods immediately alerted him to the significance of the find. Draper made many further visits to Rainbow Bar and recovered a large number of similar tools from the site. He contacted several prominent archaeologists and institutions who were recognised authorities in the study of stone tools of the Lower Palaeolithic period



Rainbow Bar

in Britain and published a short article concerning his discovery (1).

Rainbow Bar is a small gravel spit which lies 300m to the west of the present-day mouth of the River Meon, where it flows into the Solent. The Bar is submerged for most of each 24-hour period, but at low-water during Spring Tides, c 1 ha of this spit is exposed and easily accessible.

During the last 14 years the author has visited and

studied the site on many occasions and large numbers of stone tools have been recovered (2, 3, 4). Over this period it has been noted that the contours and levels of Rainbow Bar have been gradually changing. The exposed area of gravel is no longer as extensive as it was in 1996. Also, a few stone tools might still be visible here, but the overall number has greatly diminished. Parts of the site that were once accessible are now being covered by material deposited by the coastal flow, which maintains an easterly direction in this location.

Currently, geologists are unable to propose an accurate date for the gravel deposit containing these enigmatic stone tools and why these implements are found in such concentration over this small area remains a mystery. There are no discoveries of similar tools of 'archaic aspect' from other coastal gravel exposures in the area, nor are they found in the eroding low-level gravel cliffs which occur nearby. Sustained excavation projects, which may throw light upon the dating problems, are unlikely to be considered because of the very limited tidal access at the Rainbow Bar site.

In June 2008, however, the author accompanied Terry Hardaker to the area, where they dug a small exploratory pit into the gravel deposit. The discovery of marine shells at a depth of 0.75m was a significant result and adds to the questions that can be posed about this enigmatic deposit.

1. Draper, J, 1951, A Stone Industry from Rainbow Bar, *Archaeological Newsletter* 3, 147-9
2. Hack, B, 1999, More Stone Tools from Rainbow Bar, *Hampshire Studies* 54, 163-71
3. Hack, B, 2004, Rainbow Bar, Suggestions for Early Dating, *HFC Newsletter* 50, 18-19.
4. Hack, B, 2000, Rainbow Bar; some observations and thoughts, *Lithics* 21, 36-44

Basing reborn.

David Allen

Basing House has been looked after by Hampshire County Council since the 1970s and over the decades there have been a number of dreams and schemes – none of which ever quite made it - to improve its appeal and interpretation. It was, therefore, with a certain trepidation that some old hands approached the latest plan, unveiled in 2009, to revitalise the site by providing new visitor facilities, an education centre, revamped museum, and much more besides. They needn't have worried. With the help of Heritage Lottery funding, Renaissance Hub funding and contributions from the local authorities, the project was as (comparatively) sure-footed as Oliver Cromwell's ten-day campaign that brought to an end



three years of Civil War siege at the site.

The project was a two-stage scheme which attracted sufficient funds from the HLF in the first instance to put together a bid for the major grant (total £1.7m). In order to win this a 'Conservation Management Plan' was required (produced by Purcell, Miller & Tritton) and a viable scheme had to be drawn up. Although County Council officers played key parts here, outside designers were selected (plb Ltd) and the whole was overseen by Focus Consultants, as well as being monitored by HLF representatives.

In essence, the new work focused on The Grange – the Great Barn, Little Barn, stables, cart shed, cow shed and farmyard – in fact, all the buildings of the farm minus the farmhouse, which had been sold in order to raise some capital. The task was to restore and conserve these heritage buildings, turning the stables into an education and community space, the Little Barn into a visitor centre and to provide all the necessary facilities one would expect today. This extended to improved surfaces and pathways from the riverside entry to the site – across the street and through Garrison Gate – to reach the ruins of the Tudor house. In the Lodge – the building added to in the 1960s, and home to the old site museum, a new Museum was to be created, with the aid of a separate Lottery Grant co-ordinated by the Friends of Basing House.

Interpretation work moved forward on a number of fronts. The Interpretation Plan (plb) identified up to 16 information points that would lead the visitor from the car park (still on the north side of the railway embankment) along the river path, into the site (via a viewing point that shows the outline of a 'restored' Basing House on the skyline) through the visitor centre and farm complex and on towards the 'Old House'. Among the key features described along the way are the Great Barn, canal bridge, Norman ringwork castle, Tudor ruins, Period Garden and Civil War earthworks. Several of these have a 'tactile' element, a 3-D cast of an appropriate object that adds to the feeling of discovery



for children and the visually impaired. An all-embracing guidebook (see below) was also prepared.

The interpretation concentrates on the Tudor history of Basing, and the great house and estate created by William Paulet, and the Civil War episode, when 'Loyalty House' withstood three years of battering from Parliamentary forces before being taken. To illuminate these periods there are leaflet and audio tours, either

in the company of 'Roland Broughton' – a gentleman servant to the Marquess, or 'Kate Haswell' – a Royalist messenger during the war. There is also an audio/visual show in the Great Barn, scene of bitter fighting in November 1643, when it fell into Parliament's hands,



before being wrested back by the Basing garrison.

Educational provision focuses on the well-equipped schoolroom, and there are other activities available, such as the 'digging pits' which are yet to be tested. The cutbacks noted elsewhere are also being felt at Basing and the site will in future be managed in conjunction with Milestones. It does have its visitor targets, however, and a strong schools and life-long learning appeal will be key. The site closed for the winter at the end of October, reopening on 1 March.

But before it closed, it opened - if you see what I mean- and this was in the lead up to the August Bank Holiday weekend. The actual weekend saw the Sealed Knot demonstrating the essence of 17th century life on the march, under canvas and around the campfire, before re-enacting the sieges and fall of Basing House. The buzz of preparation in the lead up to this – both in terms of museum and building work and the re-enactment show – can hardly have been less intense than when Cromwell and his New Model Army were sighted, dragging the mighty Canon Royal north from Portsmouth (it took scores of horse to move it). Fortunately we all knew that the consequences in 2010 would be not quite as dire as those in 1645. The Battle duly happened – and all those strewn around the battlefield were able to jump up at the end of the day – and the Interpretative Trail, Visitor Centre, Great Barn and Lodge Museum duly opened, to the enjoyment of many. The real challenge now is to keep the numbers ticking along, as we move through this age of austerity. If you haven't been to Basing recently, do think about it. It's one of the most important sites of 16th and 17th century England, and the fact that it was so battered and bruised only adds to its character. It's also a haven of green. Kingfishers dart along the Loddon, red kites and buzzards wheel overhead. The Walled Garden provides order and precision, while the ruined cellars remind us of the upshot of war...and all is explained – to a greater or lesser extent – just as you wish.

<http://www3.hants.gov.uk/hampshire-museums/basing-house>

Quarley Down Ancient Environs Project: The Laundry Field excavation - Interim note on results from 2007-2009

The impetus for this project was the discovery of a hoard of Bronze Age metalwork – still working its way through the Portable Antiquities process even now! Landowner Henry Edmunds, a well-known conservationist, was keen to learn more about its context and enlisted the help of Cynthia Poole, who recruited an impressive team of volunteers. Their work included a geophysical survey and field walking, before trenches were opened in the Laundry Field.

The first trench examined the context of the Bronze Age artefacts, but four subsequent trenches investigated the anomalies found by geophysics, with more than 300 sq m opened in total. The survey indicated the presence of a sub-oval enclosure with additional features around its north side and a number of internal features, some of which hinted at a circular structure. To the south of the enclosure was a linear feature and to the west a strong anomaly, possibly a large pit. Field walking produced a concentration of worked and burnt flint and pottery over an area about 60 m in diameter. Beyond this, to the west, evidence for occupation gradually decreased.

The sub-oval enclosure measured c. 30 m north-south by 20 m east-west. The magnetometer survey suggests that its ditch was shallow or absent to the west,

but better preserved to the east and south. The exact alignment on the north was unclear. In fact the boundary proved on excavation to be a series of discontinuous hollows, filled with very clean 'brown earth' soil. No dating evidence was recovered from these areas, except on the east side where an occupation deposit filled the hollow and a small quantity of pottery and animal bone was recovered. The interpretation of the boundary is that rather than being a ditch it represents the position of a hedge, possibly deliberately planted in small pits. Within the enclosure a number of postholes were identified, one containing a bone pin on its base. No clear patterns could be defined but the suggestion is that buildings may have existed within the enclosure. Three pits were also found. One was sterile, except for a few flint flakes, but another contained a quantity of broken pottery. This appears to be Early-Middle Iron Age in date.

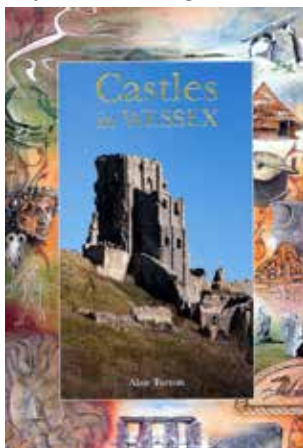
The third pit was extremely shallow, and could easily have been missed, except for some protruding bones. On close examination they turned into the articulated skeleton of a young pig, probably under 6 months in age. The bone was in very poor condition and lucky to have survived.

Work continued in 2010.

book reviews book reviews book reviews book reviews book reviews

Turton, Alan, **Castles in Wessex**, 32pp colour, £4.99 (Wessex Books, 2010)

This latest offering from Wessex Books, written by Alan Turton, is a colourful account of walled fortifications in the area, from the era of the Anglo-Saxon burhs to the dramatic days of the English Civil War. It begins with the usual useful map and gazetteer in which Hampshire can boast eleven sites, more than any of its neighbours. Among these are Conquest foundations and Norman



fortresses, castles of the 'Anarchy', and palaces of the Bishops of Winchester. Angevin and Plantagenet strongholds also play their part, along with the Renaissance flourishing and 17th century demise of Basing House.

The book is delightfully illustrated with new photographs by Nicola Turton and peppered with interesting and pertinent quotes. Special sections deal with siege warfare - Odiham and Basing feature here - and siege engines, with reconstructed magonel, perrier, springald and trebuchet all depicted. There are

also chapters on 'Castle Households and 'Castle Life', where subjects such as food and drink, water supply and sanitation are considered.

In short, this is the perfect pocket introduction to the phenomenon of 'the castle' with the added bonus that it is focused upon our area. This should encourage us to get out and visit some of the sites in question, adding the pleasures of an enjoyable outing to the satisfaction of a rewarding read.

David Allen

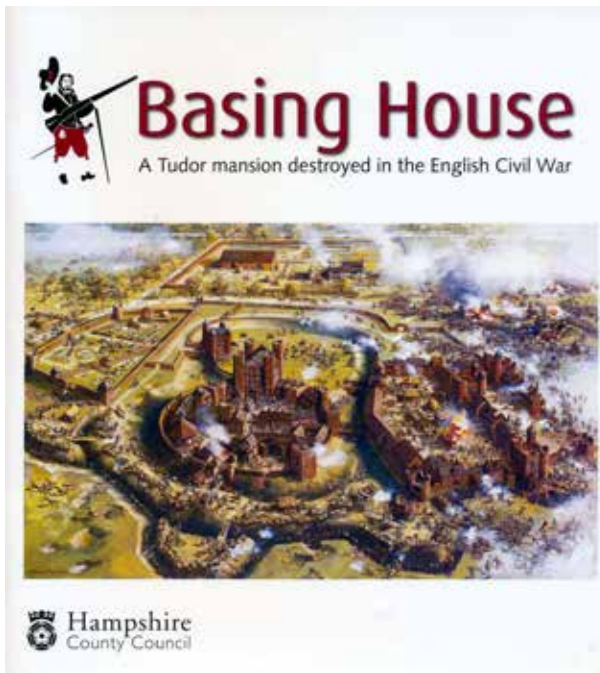
Basing House: A Tudor mansion destroyed in the English Civil War, 24pp, £5 (HCC, 2010)

The major programme of interpretation and display at Basing House is accompanied by a new guidebook, produced by Hampshire County Council



in conjunction with Pitkin Publishing. It provides a succinct narrative of this fascinating site from its origins as a Norman Castle to its glory days as a fine private house, before venturing into the dark deeds of the Civil War siege, and beyond. Due prominence is given to the achievements of William Paulet, 1st Marquess of Winchester, who managed to steer a successful and

profitable course through the reigns of Henry VIII, his offspring Edward and Mary, and into that of Elizabeth. Life in his great house is considered in relation to the surviving ruins and the workings of the estate in the light of the Great Barn and fishponds, arguably its most complete feature today.



Not surprisingly, the Civil War sieges (1642-45) and dramatic fall to Cromwell's forces receive a four-page spread. Like the rest of the book they are illustrated with a mix of contemporary material and artist's impressions, the artist in question being Mike Codd. A smattering of relevant finds, either from the excavations of a century ago or more recent work, are



also included. As well as being a 'good read' and providing for the armchair visitor, the publication serves its purpose as a guidebook, with a centre page of 'Map and Tour Highlights' which follow a similar format to the on-site interpretation.

David Allen

The Late Roman Cemetery at Lankhills, Winchester; Excavations 2000-2005, xvii, 569pp (Oxford Archaeology, Monograph 10, 2010) £25.

This handsome hardback volume, with a wealth of colour illustration, describes the work carried out by Oxford Archaeology in 2000-2005, when they examined 307 inhumations and 25 cremations, to complement the 444 burials and seven cremations published in the celebrated **Winchester Studies 3** by Giles Clarke, in 1979.

The excavations revealed the northern limits of the cemetery and most of the burials were oriented west-east in relation to this boundary. As in the earlier excavations, the burials were mostly in coffins, and had a much greater frequency of nailed footwear and other grave goods than is usual in late Romano-British urban cemeteries. There were coins from 28 burials and pottery vessels from 39. Jewellery was often associated with adolescents and young women, and spindle whorls with older individuals. Six crossbow brooches were found, to go with the eight reported in 1979. These and the associated belt equipment indicate an unparalleled military element, particularly from the mid-4th century onwards.

The most spectacular individual burial contained a gilded and inscribed crossbow brooch, silver-gilt belt fitting, and decorated spurs, a unique group for Roman Britain.

Immigrant burials?

The human remains suggest a generally healthy population with a number of individuals apparently living into their 60s. Detailed analysis was carried out on 40 individuals to test the theories, advanced 30 years ago on the basis of the grave goods, of immigrant groups from Pannonia, but there was an almost complete lack of correlation between non-British isotopic origin and 'intrusive' metalwork.

Use of the cemetery began early in the 4th century. The official or military graves date from the second half of the century and may relate to the possible identification of Venta Belgarum as the location of an Imperial weaving shop, or gynaecium, but this cannot be more than a tentative suggestion.

David Allen

exhibition exhibition exhibition exhibition exhibition

The Forgotten Emperor – a touring exhibition

The Forgotten Emperor is a lively exhibition from the Hampshire Museums Service, currently touring the county. It tells the story of the late 3rd century Britannic Empire, when first Carausius and then Allectus held sway over Britain, and a slice of Gaul, for more than a decade.

Mausaeus Carausius was a Menapian (modern-day Belgium) of humble birth who had perfected his skills as a boatman but came to prominence in the land-based campaigns to mop up the 'Bagaudae', bands of brigands who roamed free in Gaul following half a century of civil unrest. Having earned his stars,

Carausius was appointed head of the British fleet – the Classis Britannica – and charged with ridding the Channel of its troublesome pirates. Somehow he overstepped the mark – the story is that he let pirates plunder British shores, before intercepting them on the way back and keeping some of the loot for himself – but for whatever reason, a price was put on his head. His response, in 286, was to seize the initiative and declare himself Emperor in the West.

Classical coins

As Carausius dug in, and some of the Saxon Shore Fort developments, as at Portchester, may date to his

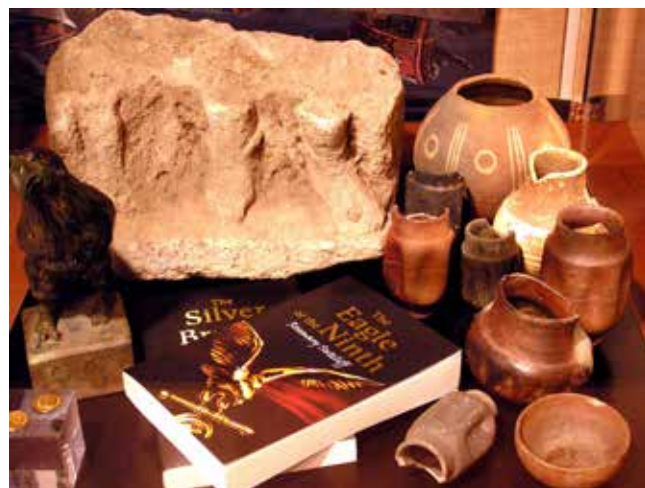
reign, he issued coins with which to pay his troops. Despite his low birth, some of these pieces show an appreciation of Classical sources, with references to lines from the Aeneid, for example. When challenged, in 289, Carausius appears to have won a decisive naval battle against Maximian, although Roman sources are fairly quiet about this reverse. He also appears to have had control of the whole province of Britain, as the only



A Rhodian amphora from the Solent

known inscription to him – other than the coinage – is on a milestone found near Carlisle.

Despite this, it was possession of Boulogne and Rouen that were the key to Carausian success. Boulogne fell to Constantius Chlorus in 293 and around the same time Carausius was murdered by Allectus, his finance minister, who grabbed the top job for himself. Allectus managed just three years on the throne – striking his own series of coins - before Rome came calling. His last stand was here in Hampshire, first off the Isle of Wight, where an unhelpful (depending on your point of view) fog bank allowed Asclepiodotus to steer his attacking force, unhindered, onto the New Forest shore. Finally, on his flight towards London, Allectus was overhauled somewhere near Silchester and his army was routed; so ended the brief Britannic Empire.



Bitterne Mercury, Silchester Eagle, New Forest pottery

Colourful

It's a great story, told with colourful computer-based graphics, but apart from a smattering of coins there are few artefacts relating to Carausius and Allectus in the museum collections. To remedy this, the displays contain 'introductory' and 'aftermath' sections rich in artefacts, including material on loan from Reading, Winchester and Southampton, as well as the 'Turton Collection' of Roman military pieces. Of particular interest is a barnacled amphora from Southampton Water, as well as the feet from a small stone statue of Mercury, from Bitterne, and a copy of the 'Silchester eagle'. This latter was not from a legionary standard, but was the inspiration for Rosemary Sutcliffe's novel, 'Eagle of the Ninth'. A companion book, 'The Silver Branch', tells the story of Carausius and Allectus.

Blackmoor hoard

During the exhibition's stay at the Winchester Discovery Centre (until 13 March) it was augmented by a small selection from the Blackmoor hoard, a later 19th century find of nearly 30,000 coins, including many of Carausius and Allectus. These were on loan from Lord Selborne and the Fitzwilliam Museum, Cambridge. This find was once interpreted as 'Allectus' war chest' but such romantic notions are less in favour these days. Interestingly, the Frome hoard, found just last year, consisted of more than 52,000 coins, the latest of which were of Carausius. This massive deposit was buried in a narrow-necked jar in such a way that it would have been impossible to easily retrieve it, and it is considered to have been a votive offering.

From Winchester, The Forgotten Emperor makes the short journey to Eastleigh (March – May) then to Fareham, and other unconquered venues thus far are the Willis Museum, Basingstoke, Lymington and the Red House, Christchurch.

David Allen

Historic Buildings

Editor: Edward Roberts, Grove House, Cheriton, SO24 0QQ

Email: edward.roberts15@btinternet.com

A discovery at Park Farmhouse, Little Somborne.

Lisa Jennings

Park Farmhouse, or as it was previously known, Little Somborne Farmhouse, is to be found within the picturesque hamlet of Little Somborne in the Test Valley. The house is situated in a down land valley one mile north east of King's Somborne and two miles south east of Stockbridge (Fig.1).

The grade II listed farmhouse is believed to date from the early 17th century and was originally a three-bay, timber-framed, lobby-entry building, with the entrance to the south east side and adjacent to the central chimney stack. In the 18th century the external framing was removed on the south east and north east elevations and replaced with brick and flint work. A full bay was added to the south west end in place of an earlier lean-to.

A listed building application was submitted for works to the building during the summer of 2010 and during a site visit to inspect progress an interesting discovery was made within a bedroom on the first floor. On the lime plastered wall it is possible to make out sections of straight black lines arranged in a geometric fashion. It is possible to make out two vertical lines about 5 inches apart and 12-15 inches in height. About 5 inches from the bottom there are narrower straight lines radiating out forming a cross like pattern. It is likely that these patterns once covered the expanse of this wall as it is possible to make out faint sections of other lines, although these are not sufficient to piece together the wall painting as a whole (Fig. 2).



Fig. 2. Wall painting at Park Farmhouse.

The potential importance of these wall paintings is clear and an initial thought was that the lines perhaps formed part of an architectural diagram. Nick Hill, Project Director at English Heritage's Apethorpe Hall, Northamptonshire, was shown images of the wall paintings. He confirmed their interest and commented that they looked similar in some respects to paintings in the Long Gallery at Apethorpe Hall (1624). Those at Apethorpe Hall when initially discovered were

believed to be a painted decorative scheme, however after further study they were shown to be part of a full-sized representation of planned oak panelling in the Long Gallery, perhaps intended to show the client before it was installed (Fig. 3).

The design at Apethorpe Hall is drawn onto a plain coat of lime plaster, in black paint or powder. The major lines are very straight and form rectilinear shapes. They appear to have been applied by 'snapping' a string line coated in the black paint or powder. No other paint or colouring was applied.

At Park Farmhouse the neat, straight lines and the lack of any other colour but black suggest that there are similarities with Apethorpe Hall. However, the design is not as accomplished and does not look as if it was ever intended for a panelled scheme; for example, the diagonal parts are not at right angles, but slightly acute, and also it is not of a panel-like layout. So the question remains: what was the purpose of these markings? Any comments from readers would be most welcome.

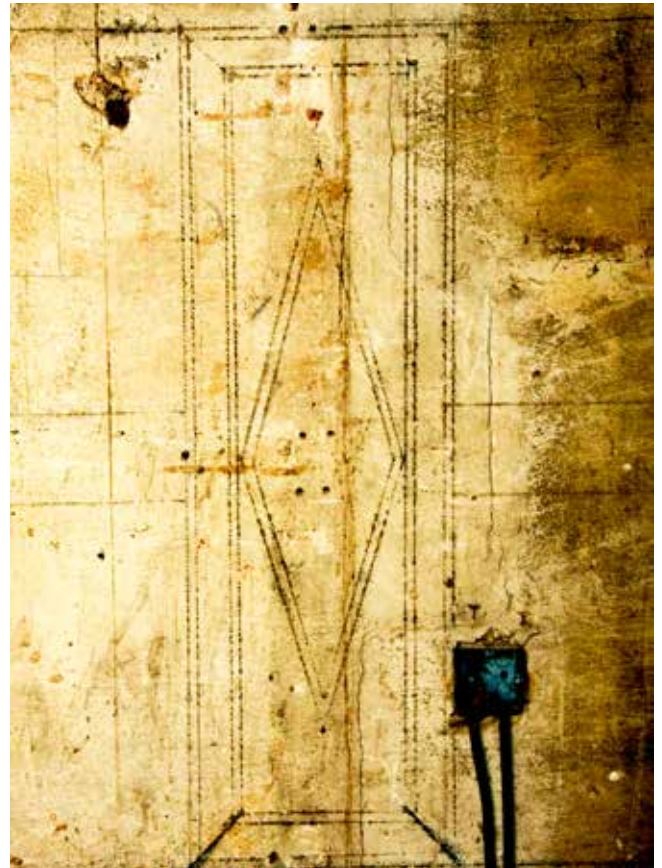


Fig. 3. Wall painting at Apethorpe Hall (English Heritage).

The Winchester Houses Of Richard Andrews

Robin Freeman and Richard Preston

In his will of November 1858¹, written four months before his death, Richard Andrews left his Southampton properties, including his carriage manufactory, to his elder son, Arthur and to his second son, Albin he left his five houses in Winchester. This article seeks to identify and describe these five Winchester properties.

Richard Andrews (1798 – 1859) is an icon of mid-nineteenth century Southampton. The archetypal self-made man, he rose from humble origins in Bishop's Sutton to become one of the largest coach manufacturers in England with a factory in Above Bar, Southampton, employing at its peak 150 hands. A political radical, free trader and religious nonconformist, he ran the Liberal interest in Southampton in the middle years of the century, being elected Mayor on five occasions and standing, unsuccessfully, for the Parliamentary representation of the borough in 1857. Andrews was, however, also a man of Winchester, taking lodgings in the city in August 1843 on the advice of Sir James Clark, physician-in-ordinary to Queen Victoria, during a serious illness. By November, on the way to a slow recovery, it was reported, apparently prematurely, that "he bought a house in Winchester and goes up and down [from Southampton] every day"².

Locations

The Winchester houses of Richard Andrews were on the south-facing slopes of West Hill, whose salubrity and beneficial qualities were being promoted in the local press. The development potential of "the Western Vale" was first exploited by James Robbins, bookseller and printer to Winchester College. In 1840-1 he started to build the four pairs of semi-detached houses forming St James's Crescent in Barnes Lane (now St James's Lane), opposite the newly-opened West Hill Cemetery (Fig. 1). This development, together with the contemporary

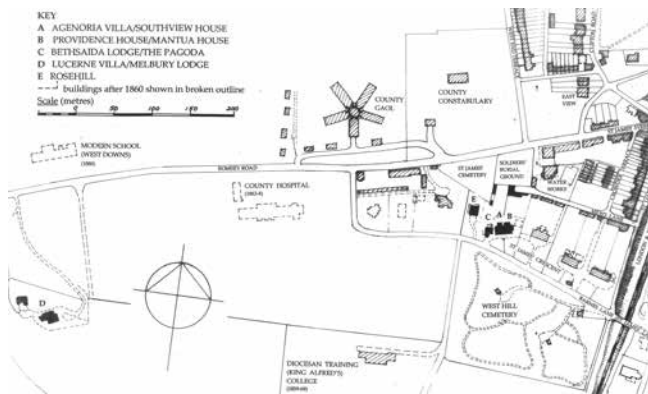


Fig 1: Sketch map of West Hill Winchester in c.1860 showing the locations of Richard Andrews's houses

construction of St James's Terrace, bankrupted the 80-year old Robbins and forced the assignment of his Winchester properties. At the receiver's sale in March 1844, Richard Andrews purchased lot no.1 in St James's Crescent, consisting of "the cottage being and forming an entrance lodge and the stables and coach houses" in addition to the pair of houses to the east. These three properties can be identified in the tithe apportionment map for St Faith's parish, published 25 March 1845 (Fig.

2). Plot 42 in St James's Lane, consisting of "houses, stables and gardens", was owned and occupied by Andrews. The two semi-detached houses can be seen in the centre of the plot. They were known as Agenoria

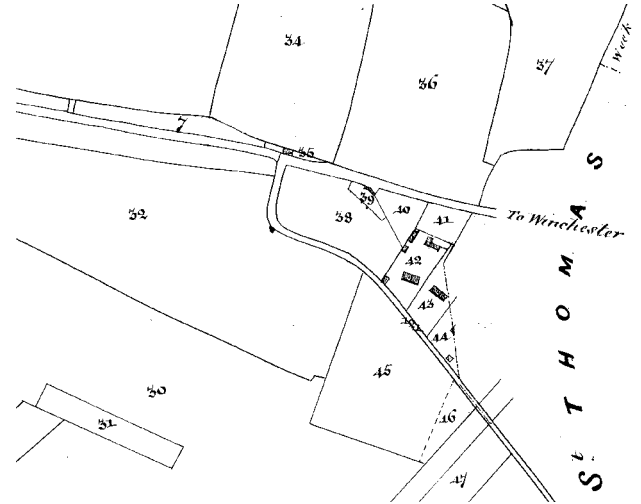


Fig 2: Extract from the Tithe Map of the Parish of St Faith, Winchester, March 1845 (Reproduced by permission of Hampshire Record Office, 21M65-F7-260-2)

Villa and Providence House during his ownership. The small rectangular building in the south west corner of the plot is an approximation of an entrance lodge, an irregular octagon in plan. Its partner – not owned by Andrews – is shown as a small rectangle on plot 44, but given its full octagonal outline on Ordnance Survey maps of about 1870 at the far end of St James's Crescent, just inside the shared entrance to numbers 4 to 10 St James's Lane.

The octagonal property was given the true puritanical name Bethsaida by Richard Andrews. It appears throughout his lifetime in poll books and directories as Bethsaida Lodge, St James's. It is better known in its journalistic form as "the palace of Hong Kong", "Hong Kong Cottage" or, by 1850, the "Pagoda". It appears in this last form in the 1851 census and is referred to as such in Andrews's will. This reflects the extensive remodelling of the property shortly after its acquisition by Andrews. The date 1844 has been uncovered during recent restoration works at the Pagoda House, cast into the tops of the iron columns supporting the balcony, together with the name of W & J Lankester of Southampton. The same date and ironfounders' names also clearly appear in the elaborate cast-iron railings that survive along the whole of the St James's Lane frontage of Richard Andrews's properties. The architect is not known. The conventional attribution to Hinves and Bedborough cannot be correct as the partnership was not formed until 1849³.

This misattribution may be explained by the fact that William Hinves and Alfred Bedborough, of 23 Portland Street, Southampton, were the architects of Richard Andrews's fifth Winchester house, Lucerne Villa. Tenders for a villa and offices at Winchester "on land adjoining the Cemetery", appeared in the local

press on 24 June 1854. Six weeks later children from the British and Foreign Schools in Jewry Street were treated by Andrews, after their annual visit to the Pagoda, to refreshments in a marquee at 'Westvale' near "the new Swiss Cottage which Mr Andrews is building there". On 5 September 1855 a hearth-warming was held, with 103 guests crammed into the dining room, to celebrate completion of "his new mansion, erected in the Swiss style, from a design by Mr Bedborough". The location "adjoining the Cemetery" is misleading, for Lucerne Villa was about 650 yards to the west of Pagoda House. It was renamed Melbury Lodge in the 1860s. Derelict and fire-damaged, it was demolished in the late 1970s to give builders access to the Kerrfield development. The site is now marked by the present Melbury Lodge, the adult mental health unit of the Royal Hampshire County Hospital.

The identification of Richard Andrews's fourth



Fig 3 Exterior View of Hong Kong Cottage, or the Pagoda, from *The Authentic Life of His Excellency Louis Kossuth*, published by Bradbury and Evans, 1851. (This illustration also appeared in the *Illustrated London News*, 1 November 1851.)

Winchester house is a little more conjectural. It is here suggested that it was Rosehill, built some time after 1845 on part of plot 38 on the St Faith's tithe map. The 1:500 Ordnance Survey map of 1870 (the first representation of the house) unites the back gardens of the Pagoda with those of Rosehill and Bellevue House (the later name for Providence House and Agenoria Villa) without boundary walls or fences and with interconnecting paths. This link is still apparent on the road frontage where the distinctive cylindrical gate-piers and elaborate Lankester foundry railings suggest a common ownership. (The possibility of a later date for the railings in front of Rosehill is suggested by the absence of the cast-iron sill cappings bearing the date and manufacturer's details, and the use of stone copings instead.) Andrews's will refers, in addition to the Pagoda and Lucerne Villa, to his "three other dwelling houses gardens land and appurtenances situate at St James's Crescent ... now in the several occupations of _Parker _Ashton and _Wheeler". The 1861 census shows Henry J H Parker, retired medical practitioner, as head of household at Providence Villa; Ellen M Wheeler, a 48-year old widow described as 'house proprietor', was head of household at 'Rosehill Cottage', next to the 'Chinese Villa'. At Bellevue Villa (the former Agenoria Villa), only a female servant

is listed, but the householder is known to have been Mrs Isabella Ashton. Finally, a report in the *Hampshire Independent* of 12 February 1859 suggests a link between Richard Andrews and the Earl of Northesk, whose seat at Longwood Park was then known as Rosehill. The courtesy title of the eldest son was Lord Rosehill. The house was demolished in about 1973. The site has within the past six years been acquired by the present owners of Pagoda House as an extension to their garden.

Descriptions

The iconic illustration of the Pagoda, reproduced as Fig. 3, comes from the *Illustrated London News* of 1 November 1851. It shows the house – that 'nondescript whimsicality' according to the unfriendly *Hampshire Advertiser* – bedecked with British, American, Turkish and Hungarian flags to celebrate the visit of Louis Kossuth, deposed leader of the short-lived Hungarian republic. For a brief moment the eyes of the political world were on Andrews's country cottage in Winchester where Kossuth was to make his critical first policy speech on English soil. The drawing, however outwardly unbelievable, is without doubt an authentic depiction given the presence of the paper's owner, Herbert Ingram, and the fact that many of the details shown survive today: the Chinoiserie of the eaves brackets, the balcony balustrades and the supports of the concave canopy which extends around the main elevations; the end of the original flint lodge, including the former main doorway (now a window), which dictated the polygonal form of the upper floors of the south wing; the cast-iron columns supporting the overhanging balcony and upper storeys, the walls of which are timber-framed and hung with alternating courses of diamond-pattern and club slates. The conservatory also appears in a William Savage photograph of c.1870 (www.winchestermuseumcollections.org.uk – search under 'Pagoda House') and would have had to be demolished to allow the later infilling of the angle between the

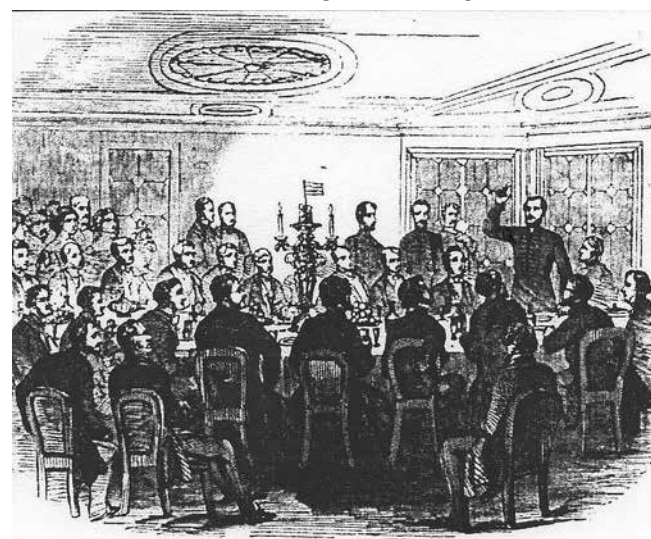


Fig 4 Louis Kossuth addressing the meeting of liberal sympathisers in the dining-room of the Pagoda, 24 October 1851

two wings to create a new entrance hall. Possibly at the same time, the lead canopy over the balcony was replaced with patent glazing; recent work at the house by the present owners has included reinstatement of the original profile and covering material. Later, other extensions were added to the north, to provide a service

wing, and, on the east side, filling in some of the space between the original east wall and the neighbouring Agenoria Villa. An internal view of the first floor dining room, with its distinctive glazing bar pattern, was also published in the same issue of the *Illustrated London News* (Fig. 4).

In choosing the Chinese style for his new Winchester cottage, neither Andrews nor his architect was following a current architectural movement or fashion. Sir William Chambers had flirted with Chinese motifs on the Pagoda at Kew Gardens and the Chinese temple at Amesbury Abbey. But neither had an enduring legacy and had been designed some 70 years earlier. The Winchester Pagoda is best seen as a one-off, an exotic and flamboyant *tour-de-force*, out of step with the nonconformist principles of its owner but in keeping with his extravagant nature and his world view as the promoter of Southampton's global maritime interests.

Agenoria Villa, now known as Southview House, is also shown in Fig. 3. This, like the other semi-detached villas in James Robbins's St James's Crescent, had a rendered front elevation containing shallow arched recesses and a central classical portico. The side and rear walls were built of flint with red brick banding under a slate-covered hipped roof. Each individual villa consisted of a "drawing room, dining room, study and breakfast room with four best bed rooms and two servants' bed rooms and good kitchen"⁴. The coach-house and stables were reached from what is now Mews Lane at the rear. The fountain shown in the drawing still stands in the front garden of Providence Villa, now called Mantua House.

Lucerne Villa was described as "in the Swiss style". If this conjures an image of an alpine chalet, the reality was more of a villa in a fashionable lakeside resort. A large reception room, which probably opened on to the garden under the veranda, was capable of subdivision into a dining room and a morning room by folding doors. Four bedrooms had access by French windows onto a first-floor balcony running the full length of the overhanging south eaves; three further attic bedrooms were lit by a single dormer and windows in the gable-ends of the main wing. As shown in the photograph (Fig. 5), there was a four-storey tower which may have contained the library, a reading room and the bathroom



Fig 5: Lucerne Villa (Melbury Lodge) from the south-east, photograph by William Savage, c.1870 (Reproduced by permission of Winchester City Council Museums Service, PWCM 4506)

with a butler's pantry and service rooms in the north wing on the ground floor. Also shown are the external walls featuring exposed timber-framing, probably false, under a steep slate roof, and abundant and elaborate carved timber detail on roof-finials, barge-

boards, eaves brackets and balustrades. The house was set in a secluded valley, sheltered by steep slopes, with a south-easterly aspect towards the lower Itchen Valley from the principal rooms.

Rosehill was a simple five-bedroom, yellow-brick, classical house which could have been built at any time between about 1840 and 1900 (Fig. 6), although the cast-iron supports to the full-width front canopy suggest an early-Victorian date. It is possible that the architects



Fig 6: Rosehill, St James' Crescent, photograph by William Savage, c.1870 (Reproduced by permission of Winchester City Council Museums Service, PWCM 2918)

were Hinves and Bedborough. In September 1849 they advertised for tenders for "the immediate erection of a new villa at Winchester for Mr Richard Andrews". This is the first known commission of the partnership between the young, and latterly more exuberant, Windsor-born Alfred Bedborough and the more experienced William Hinves. It is, however, possible that this advertisement is for an earlier, abortive attempt to build Lucerne Villa.

The Southampton Connection

Agenoria Villa, Providence House and Rosehill were investments, ensuring income for Richard Andrews through a series of leases. The Pagoda and Lucerne Villa were used, successively, by Richard and his wife Hannah as weekend retreats from the pollution and stress of Southampton. They were also exploited by Richard Andrews to entertain European political refugees and representatives of shipping magnates to bolster his political power base in that town and to advance the trading position of the port. They were, in effect, an enclave of Southampton in Winchester⁵. Even when the family left the Pagoda for Lucerne Villa, the house was let for two years, starting in June 1857, to the now virtually destitute Thomas Leader Harman, a long-term political ally of Andrews. Winchester did, however, derive some benefit from the 'orgies' and 'rollicking festivities' (to quote the Tory *Hampshire Advertiser*) of the Pagoda. During 1853 the Sheriffs of London and Middlesex made two overnight visits to the Pagoda. This may have led the former, Alderman Alexander Croll, to become the major shareholder in the Winchester Gas and Water Works⁶. In 1859, shortly after Andrews's death, Croll took a lease on Lucerne Villa.

Postscript

Richard Andrews died on 28 March 1859, not at one of his Winchester properties or at his Above Bar house in Southampton, but around the corner in Portland Terrace. The 'Southampton Carriage Bazaar' continued to prosper under the ownership of the elder son, Arthur who pursued a successful political

and commercial career in that town. By contrast, the younger brother, Albin, to whom were left the five Winchester properties, subject to his mother's right to reside in the Pagoda for the remainder of her life, squandered his inheritance, after Hannah Andrews's death in November 1860. Subsequent censuses chart his decline. In 1861, Albin is living with his wife and family in St James's Terrace, close to the Pagoda, where there is a tenant, Rosina Brett (a widow with a wine-merchant's business in the Pentice at Winchester High Street). Albin is described as an insurance company agent. He is missing from the 1871 census at Upper High Street where his wife Alice is head of household, 'living on income from rents and letting apartments'. In 1881, Albin, described as a clerk, is in a common lodging house in Albert Street, Southampton, one of the poorest parts of the town close to the Rookeries, where the head of household is described as an imbecile. His wife is living in Hyde, Winchester, with their son, also Albin, a schoolteacher.

By 1871 the Pagoda was owned by Colonel Ralph Smyth, many of whose family had 'St George' as their middle name, prompting a change of house name to St George's Lodge, retained until the 1980s. In 1936 the house was acquired by Winchester City Council and subdivided into three flats occupied at some time by Water Board employees. This unsympathetic conversion was reversed when Peter Hitchin purchased the building in 1973 and ran the Bucknall-Hitchin Tutorial School here for a few years, during which time some of the original hexagonal glazing bar pattern was restored in windows and French doors. Returning to domestic use in the late 1970s, the Pagoda went through two

ownerships before being purchased by Kate and Jason Gatenby in 2001. These owners, with Michael Carden as consultant architect and Whittington and Moore of Winchester as building contractors, have undertaken a four-year repair and restoration programme, involving structural repairs to the floors and balconies, internal alterations and the reinstatement of missing or decayed original details. This exemplary work was given a Design Award by the City of Winchester Trust in 2007.

Notes & References

- 1) Hampshire Record Office 5M62/2, pp 410-3 (Microfilm M243)
- 2) William Brooks to T L Harman, 2 November 1843, Hampshire Record Office 4M92/G8/31
- 3) Alfred Bedborough (1828-1911) was a son of J T Bedborough, a former master mason to George III and George IV at Windsor Castle and subsequently a developer of speculative housing estates in Windsor and Slough. The practice of Hinves and Bedborough is the subject of an article by Richard Preston in the *Journal of the Southampton Local History Forum*, 17, Autumn 2010, pp 3-31 (also accessible through the Southampton City Library website).
- 4) From advertisement to let Agenoria Villa, *Hampshire Chronicle*, 20 March 1847.
- 5) This is the theme of an article by Richard Preston – The Winchester connections of Richard Andrews – in the *Journal of the Southampton Local History Forum*, 13, Spring 2008. An updated version is available through the Southampton City Library website.
- 6) For a time, in succession to James Robbins, Richard Andrews had been the proprietor of the nearby Winchester Water Works, *Hampshire Independent*, 9 September 1843.

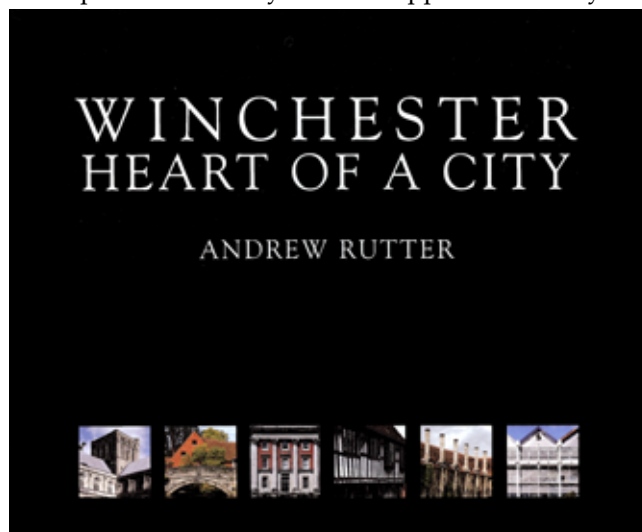
book reviews book reviews book reviews book reviews book reviews

Winchester: Heart of a City. Andrew Rutter (chapter 10 Richard Whinney). Pub. P. & G. Wells Winchester. Sponsored by the City of Winchester Trust.

Fine historic buildings – both secular and ecclesiastical – are scattered widely across Hampshire and many members of the Field Club have enjoyed the privilege of visiting them. However, in the very centre of the county – in Winchester – there lies a most remarkable concentration of such buildings, parts of which range from the 11th century. The problem is one of 'embarras de richesses': distinctive architectural styles and agreeable vistas are to be seen everywhere, but their real significance and sometimes quirky histories would often, in the past, have remained unknown to the majority of us. Now, Andrew Rutter, in this monumental but very readable book, has done Winchester – and us – a great service. In a highly organised way he has described, evaluated and, very often, illustrated the

streets, terraces, individual buildings and historic gated enclosures of the Winchester conservation area. These illustrations are by a number of people, including the author himself: they consist of historic documents supplemented by excellent modern photographs, paintings and drawings. Following the logic of the stages of the city's development over the centuries, the author has divided the whole conservation area into six easily followed sections. His descriptions of the architectural gems, occasional disappointments and oddities to be found therein are based, as he says himself, on '24 years enjoyable practical work in Winchester, with its historical buildings, rather than any sustained academic research'.

Andrew Rutter had been appointed as Winchester's first Conservation Officer in 1974 – in the early days of conservation area legislation – and he brought to this role not only his sound training as an architect but also a talent for freehand drawing in



ink. Previously he had worked for Hampshire County Council on forward planning so he was also able to apply a planner's overview to the problems that must have confronted him in Winchester. As is pointed out in the Foreword by Lord Montagu of Beaulieu, a past Chairman of English Heritage, Andrew Rutter was an outstanding example of those planning and conservation officers who rose successfully to the new challenge of balancing preservation with enhancement of cities, towns and villages.

The core of this impressive book describing Winchester is a colourful and informative examination of its conservation area. However the author points out that it is not only the buildings that give this area, and the city as a whole, its unique character. The greenery provided by trees, both on the hillsides and amongst the streets and other inner city open spaces, is a crucial ingredient that could so easily be lost without constant vigilance. Winchester also benefits from an unusually close relationship with the surrounding countryside. Fields and woods about the city edges and the approaches are, so far, not yet visually spoiled by the unattractive modern commercial developments that degrade the approaches to so many towns and cities. These qualities are particularly well illustrated in an 'Analysis of the Winchester conservation area setting' – namely 25 descriptions of relevant views, nine of which are enhanced by delightful watercolours painted by architect Keith Leaman. Another supplementary section of great interest is that on the 'Archaeological & Historical Development of Winchester' by Richard Whinney assisted by Graham Scobie. Many other people have made important contributions to the book:

these have been acknowledged in either the Preface or in the list of Acknowledgements.

Shortly before he retired, Andrew Rutter was asked to undertake what was a statutory requirement – a 'Conservation area appraisal'. Although he stresses that the opinions expressed in this book are personal, the work done for that appraisal forms its factual core. We are fortunate that this immense record, enlivened by the author's frank opinions, is now in the public domain.

John Stott

Making an Entrance: Period Doorways in Alton, by Alton U3A Local History Group, 24pp. £1.50 (+ 50p p&p) payable to Jane Hurst at 82 The Butts, Alton, GU34 1RD (on behalf of the Alton U3A).

This booklet has been compiled by a local history group under the guidance of Jane Hurst. After a short introduction, it comprises over 40 photographs of some of the best examples of the doors, door-frames, fanlights and hoods to be found in the historic centre of Alton. The photographs are clearly produced and the doorways are presented in rough chronological order; two to an A4 page. Each picture is accompanied by helpful architectural and historical notes. The result is an instructive picture of the development of door furniture, mainly dating between the 17th and 20th centuries. Apart from the attraction of browsing through the illustrations, this will be a useful guide to local historians in other towns and should inspire other local groups to undertake a similar task.

Edward Roberts

HFC News HFC News HFC News HFC News HFC News

The Field Club has new software

Alison Deveson

The Field Club first computerised its records in the early-1990s, using software called M-plus, which was developed with a great deal of input from our Treasurer Sandy McKenzie. This served us well for many years, but it doesn't run on the new generation of computers, and it became evident that we had to replace it. After much deliberation by a sub-committee of Council, we decided on a system called Book-it, by Instinctive Systems of Derbyshire, and this was installed in November 2010. We are running the two systems in parallel for a few months until we are completely satisfied that there are no teething problems.

The database has been thoroughly revised, and everyone now has a membership number. Under the terms and conditions of the Data Protection Act 1998, the personal contact information in our database will be used for Hampshire Field Club purposes only. It will not be disclosed to individuals or organizations outside this remit. The contents of the database are held on

computer file, and you are able to view your data, on request to the Membership Secretary.

Book-it is much more versatile and efficient than the old software.

It should make the administration of the Field Club much easier, and reduce the time needed to produce all the material for invoices, mailings and reports to Council. It will also give us the opportunity of communicating with members by e-mail or text in the future if we wish to, and of performing other functions such as event booking should this ever be desirable. We hope that Book-it will serve the Field Club well for as many years as M-plus did.



Local History

Editor: Mark Page, 7 Irwell Close, Oakham, Rutland, LE15 6SX
email: mrp15@leicester.ac.uk

Florence Horatio Nelson Suckling of Highwood, Romsey

Phoebe Merrick

In an interesting article about Chilworth's missing manor houses (Newsletter 52) George Campbell refers to a 'Mrs Suckling'. It was good to see part of her work acknowledged as she was, for many years, an active member of the Hampshire Field Club. She entertained members at her home, Highwood, on the outskirts of Romsey and gave talks and may have written for the *Proceedings* from time to time. She was immensely knowledgeable about Romsey and the surrounding villages of the lower Test valley, but her writing is undisciplined. To the modern reader it comes



Fig. 1. Captain Thomas Suckling RN (b. 1844) taken in about 1900. He served in the Royal Navy from 1858 to 1891 and married Florence Suckling in 1876.

across as a stream of consciousness, rather than structured text. This means that it is very hard to find any reference to any particular person or place. Many of her articles were bound into a series of volumes and most of these have survived. Sadly, one major volume has gone astray, namely the one containing the watercolours painted by Mrs Suckling's friend, Miss Fanny Buckell. It does not appear to be in any of the repositories where it might be expected to be found and this represents a great loss. The Lower Test Valley Archaeological Study Group (LTVAS) has retyped all the articles they could find, so they can be searched digitally, and the Group has copies of the missing watercolours and most of her photographs.

Florence Horatio Nelson Suckling was born in 1848 into a naval family with links to Admiral Nelson on his mother's side. Florence's father was an admiral, and had been a midshipman at the Battle of Trafalgar. Admiral Suckling bought property at Highwood from Lord Palmerston and built the house that became the family home for many years. Admiral Suckling died when his daughter was 15. When she was 28, Florence married her first cousin, Thomas Suckling, who became a naval captain (Fig. 1). Highwood became their home for the rest of their lives (Fig. 2). Their only child died in infancy. The baby was buried, like Florence's parents and later Thomas and Florence themselves, in the churchyard at Ampfield, which was their nearest

church although not their parish church. The family also had estates in Barsham and Shipmeadow, Suffolk.

Florence Suckling was influenced by Lady Mount Temple, whose husband inherited Broadlands and its estates from Lord Palmerston. Lady Mount Temple and her set gave much importance to animal rights. The group included Revd Basil Wilberforce and John Ruskin. One of Lord Mount Temple's more questionable rulings was that his tenants were not to keep ferrets, and rabbits became a great nuisance to their tenants' crops. An illustration of Mrs Suckling's concern for animals tells of her leaning out of her drawing room and shouting to the gardener (she became very deaf): 'Too hot for the pony, John. Put him away and cut the lawn yourself'. The late Aldyth Wellington, then Miss Williams, who recounted this anecdote, used to visit Mrs Suckling with her mother and when Mrs Williams was tired of shouting into the ear trumpet, she would ask if Mrs Suckling would like Aldyth to recite.

Mrs Suckling was a devoted member of the Royal Society for the Protection of Birds and an ardent supporter of their Bird and Tree Scheme. This scheme was an annual competition in which children had to observe a bird or tree over a period of months and write about it. The little school at Ridge on the western side of Romsey frequently won prizes and medals—it was virtually that school's only academic success (Fig. 3). Mrs Suckling would encourage the children to observe nature and frequently donated the tree that the school received whenever it won a prize.

In addition, Mrs Suckling was an active member of the RSPCA, being secretary of the Romsey branch for 47 years, and of the New Forest branch in its early days.



Fig. 2. Highwood House in about 1900, the Suckling family home.

Several sections of the RSPCA were represented at her funeral, including a representative of the chief secretary. Mrs Suckling had formed several Bands of Mercy in the Romsey area in order to promote kindness to animals

amongst children. She would give them talks, illustrated by magic lantern slides in which she was assisted by her husband and by Fanny Buckell, who took over her mantle after her death. She encouraged village school teachers to form Bands of Mercy and would send them talks and slides to be shown to the children. She ran competitions for them and provided the many prizes. She wrote plays and stories for children that emphasized the message. She had a column in the *Romsey Advertiser* dedicated to kindness to animals, and worked with the local RSPCA inspector to highlight examples of cruelty. It is reported that 'What would Mrs Suckling say?' was a local saying in Romsey when actions of doubtful kindness were committed.

In addition to her work for animal welfare, Mrs Suckling was an enthusiastic local historian. She had many articles published in the *Hampshire Chronicle*, the *Romsey Advertiser*, and the *Proceedings*, and it is these that have been bound into volumes now lodged variously in HALS, Southampton University, and Hampshire County

Library. (The British Library declined them and for many years they were kept by Romsey Borough Council until being removed to professional repositories.) Keen-eyed readers will notice that Mrs Suckling's information is acknowledged in many footnotes in the Victoria County History chapters on Romsey and the surrounding areas.

In her will, Mrs Suckling left several bequests to her servants and friends. The estate was left to a cousin who changed his name to Suckling by deed poll. The



Fig. 3. Bird and Tree competition medal presented to a pupil of Ridge School in 1929.

RSPCA featured extensively but not the RSPB. Apart from monetary bequests the proceeds of the sale of three pictures by Constable, which amounted to £2,790, was given to the Romsey branch of the RSPCA. The lantern and slides were left to the Romsey branch of the RSPCA, but what became of them subsequently is not known. Curiously by modern standards, she ordered that her horses, donkeys, dogs, cats and other animals be put to death by humane killer as soon as possible after her death.

Now Mrs Suckling is remembered locally for the many photographs, particularly of churches, that she assembled before the First World War, and for her extensive writing on the history of the Romsey region. A few photographs of her time at Highwood survive and some families in the area report on ancestors who worked at Highwood. There is a pair of semi-detached farmworkers' cottages in Highwood Lane embellished with terracotta tiles bearing the initials FHS and the date 1901. The house itself is now the centre of Stroud School, a preparatory school. Test Valley Borough Council has refused to name a street 'Suckling' on the grounds that they have enough trouble with graffiti without providing most of the letters, and if any road were called 'Florence' it would be attributed to Florence Nightingale.

Sources and further information

Jessica Spinney published an article about Mrs Suckling in the *Hampshire Field Club Newsletter*, new ser., no. 1, Spring 1984.

The reports of Mrs Suckling's death, funeral and will are to be found in the *Romsey Advertiser* of 14 Dec. 1923, 21 Dec. 1923, 18 Jan. 1924, and 31 Oct. 1924.

LTVAS Group has an electronic copy of most of her writings and copies of many of the pictures in her several volumes. Those volumes that have reached public places are to be found in the catalogues of HALS, Hampshire County Library, and Southampton University library—reference 'Suckling'.

The reference to ferrets occurs in Southampton University archives, BR 111/24/2.

In Elm and Oak Country: Gerard Manley Hopkins by the Hamble

David Chun

Gerard Manley Hopkins (1844-89) was, as well as poet and priest, an acute and empathic observer. He noted plants, trees and buildings, landscapes and, being an avid sky-watcher, recorded the effects of light and weather. In September 1871, he stayed at Bursledon, close to the River Hamble, for five days and has left an interesting account of the area.¹

Hopkins spent only a short time in Hampshire, and there were apparently no personal or family connections with the area. It seems to have been no more than a holiday visit: in a letter to Robert Bridges dated 2 August 1871 he wrote that he expected 'to pay my people a short visit down near Southampton, where they have taken a cottage'² However, the period of escape from his studies—he has just completed the first year of the 'philosophy' part of his Jesuit training at St Mary's Hall at Stoneyhurst in Lancashire—gave Hopkins the time to make extended journal entries. On

arrival at Bursledon he notes:

From the garden there is a beautiful view over the river. It is an elm and oak country but not much wooded. The woods have the rich packed look in the distance one notices in southcountry landscape. Laurels grow strong—glossy, smart, and graceful, and bear their fruit.

The description seems at first sight contradictory: the woods have a 'rich packed look' but the area is 'not much wooded'. However, though there was indeed, on the evidence of the Bursledon tithe map and award of 1839-41, not much woodland in the parish, the distant views of the Hamble valley from the high ground at Bursledon revealed, as much then as now, a well-wooded landscape extending towards the horizon.³ This is borne out by a watercolour of 1887, made less than 20 years after Hopkins' visit of the view from the vantage point of the garden of the vicarage, at the junction of

School Lane and Kew Lane, looking down to Hungerford Bottom (Fig. 1).⁴ It shows a tree-filled vista that would have contrasted strongly with the more open moorland countryside around Stoneyhurst.

On 14 September, the day after his arrival, he went by boat to Hamble returning on foot. On 15 September he visited Netley Abbey, which had attracted



Fig 1: Watercolour of the Hamble Valley 1887 (HRO 58A01/2/2).

artists and writers since the 18th century. It had not at that time entered into the custodianship of the Ministry of Works and the ash trees that are familiar from 19th-century engravings were still growing among the ruins. Hopkins observed that Netley Abbey was 'a spot which everything makes beautiful—the ruins, the lie of the ground, the ivy, the ash trees, and that day the bright pieces of evening light'. Hopkins is as much impressed by the ash trees, living and dead, as the medieval architecture, though the latter interested him greatly and he described the buildings in some detail:

... lastly three beautiful windows in the chapterhouse, not quite of equal breath etc—a plain sixfoil, clear, not enclosed in any roundel, at least inside, riding two plain broad lancets: the cusps were sharp and both it and the lancets had no work beyond the splay inwards but the jambs (?) of the head to the whole window were moulded and stripes of red colour could be seen in the splay of the lancets of one window radiating from the opening and so following the splay.

On 16 September he travelled to Southampton for confession, travelling by the floating bridge, which had opened in 1836 and had been fulsomely praised as 'one of the neatest and most commodious boat passages in Europe'.⁵ Returning on the floating bridge Hopkins described the western sky in a manner that seems to anticipate his later poetry: 'a great wide wing or shelved rack of rice-white fine pelleted fretting'. On his last full day at Bursledon he attends mass at Netley Hospital and walks in the evening with his mother and sister 'through stubble fields and wood', noting 'the V-shaped

appearance in the sky opposite the sunset', what would now be termed anti-crepuscular rays.

Hopkins' brief visit ended on 18 September when he returned to Stoneyhurst to complete his studies. We might have hoped for more. Hopkins was a talented amateur artist but, apart

from a couple of small sketches of architectural details of Netley Abbey in his journal, he appears to have made no sketches of the area, at least which have survived.⁶ Nonetheless Hopkins' prose descriptions are of value. In contrast with much 19th-century topographical writing, the things he describes are individualised and specific, and his architectural descriptions have great energy. The Bursledon entries bear out Geoffrey Grigson's comment about 'the extremely solid and packed quality' of Hopkins' written observations.⁷

Notes

- 1 The journal entries for the period of his stay can be found in Humphry House (ed.), *Note-Books and Papers of Gerard Manley Hopkins* (1937), pp.53-156. Norman White's *Hopkins: A Literary Biography* (1995) has provided useful background information.
- 2 Abbot (ed.), *Letters of Gerard Manley Hopkins to Robert Bridges* (1935), pp.27-8.
- 3 HRO 21M65/F7/42/1 & 2.
- 4 HRO 58A01/2/2. Reproduced with permission of Hampshire Record Office.
- 5 Robert Mudie, *History of Hampshire* (1938), quoted in B C Jones, *Crossing the Itchen: The Itchen Floating Bridge and Roads 1834-1934*, Southampton Papers 1 (no date).
- 6 Interestingly Hopkins' brother Arthur, who became a professional artist, did make a sketch entitled 'An Afternoon Pipe. Bursledon. 16 Sept. 1871'. I am grateful to the two distinguished Hopkins scholars Joseph J Feeney and R K R Thornton who answered my enquiries about this drawing, and provided further information. The sketch is in a private collection and it was not practicable to seek permission to reproduce it here. It is understood that it shows a man (possibly a sailor) smoking an afternoon pipe, and was presumably made on the Bursledon waterfront. It is listed in R K R Thornton, *All My Eyes See: The Visual World of Gerard Manley Hopkins* (1975), an invaluable visual record of Hopkins.
- 7 Geoffrey Grigson, *Gerard Manley Hopkins* (1958).

Archives and Local Studies News from Hampshire Record Office

David Rymill

Recent additions to the archives

Helping the blacksmith

A memoir by the late Kenneth C Hole concerning his childhood at Lyde Green Farm, Rotherwick, written in 1989, describes buildings and people in the parish in the early 1920s (52A10/1). Although only two pages long, it contains interesting details. He remembered, for instance, helping the blacksmith Ted Lovegrove by pumping the bellows: 'In the winter of course

it was beautifully warm'. Tylney Hall, home of Sir Herbert Cayzer, was 'a great venue twice a year: in the Summer the children from the Estate and neighbouring farms were invited to a Fete on the lawns and around Christmas time to a party in the Hall'.

Schools and a library

A series of log books has arrived from Buryfields School in Odiham, covering the Infants' department, 1912-23, and the Girls' and Infants', later County

Primary, later County Infants' School, 1935 onwards (28A10). We already held log books for the infants, 1881-1912, and the girls, 1893-1918, and admission registers, 1870s-1900s (130M87). We have also received a collection of Odiham Grammar School magazines, one from June 1922 and a series covering 1941-51, together with Odiham Grammar School old scholars' annual newsletters, 1952-2010 (87A10). The records of Ridge C of E School, Romsey (including admission registers from its opening in 1875 to its closure in 1934) have been supplemented with a minute book of the managers (governors), 1903-25 (152M87).

We have received minute books and a catalogue relating to The Christopher Library of Religion (95A10). The Library, which contained over 2000 books, began in 1927 as the Free Library of Religion and Booklenders' Exchange, and originated in the lending of books on religion by its founder to her sick friends. In 1933, it was donated by Miss Alice Debenham to the Rural Deanery of Bournemouth, and transferred to St Peter's Hall, Bournemouth. In 1964 the books were transferred to Old Alresford Place, the Diocesan Retreat House.

Business archives large and small

An unusual arrival was a ledger kept by James Hinwood while he was practising as a veterinary surgeon in the Over Wallop area, from c.1907, and later running a general stores in the village (79A10). From more recent times, copies of the Pirelli house magazine *The Cable* for 1961-3 (76A10) have been received along with a programme for the official opening of the Pirelli General super-tension cable factory in Eastleigh in 1965. The magazines contain a wealth of information about the activities of the company's employees and the October 1961 edition contains some fascinating observations on a public demonstration of GEC colour television. Apparently it was '10,000 percent up on black and white'!

A large group of records has been received from a long-established Romsey solicitors' practice, Footners. Most of this collection is awaiting cataloguing, but we have made available a minute book and account book of the Trustees of the Ringwood Turnpike, otherwise Romsey and Ringwood Turnpike Road, both covering the 1820s-70s (167A09/G5 and G2). The trustees were appointed in an Act of Parliament passed in the 32nd year of George II which dealt with, amongst other roads, a road from the Turnpike Road at Romsey through Ringwood to Longham Bridge and Wimborne Minster in Dorset. The minutes give insights into the running of the road; for instance, 1822 Thomas Butt, renter of the tolls at Romsey Gate, applied for a reduction in rent to offset his losses 'in consequence of the blowing up of the Bridge at Ower' (he was allowed 5 guineas). In 1824 we read that the tolls at the Mainstone Gate and Picked Post Gate produced profits of £175 and £132 respectively. An accompanying volume (G3) gives the text of the Act, including details of tolls to be charged, ranging from 4d for horses drawing coaches, chaises, carts, wagons, etc, to 1s or 6d per score of larger and smaller animals (oxen, cows and neat cattle, and calves, hogs, sheep and lambs, respectively).

Two recently-catalogued collections of estate agents' sale particulars brochures and posters (187A09 and 4A10) relate mainly to Andover and the surrounding villages, and include nearly 100 items, dating from the 1820s to the 1950s. They include detailed catalogues of the stock of several local businesses, such

as the goods of Mr Robert Portlock, coach and harness maker of King's-Head Street, in 1820 (4A10/1/1), and, six years later, the utensils and stock of W and R Maud, common brewers and maltsters, were to be sold at their malthouse near the western turnpike gate, Andover, and at the brewery in East Street (4A10/1/3). Brochures for domestic houses include one for Spring Hill Villa, St Mary Bourne, in 1880, described as a 'bijou residence ... replete with every convenience' in 'tastefully disposed grounds' and in a 'proverbially healthful and salubrious district' (187A09/7/4).

A Hayling family

An interesting group of papers has been catalogued relating to the Trigg family of Hayling Island (135A09), architects, surveyors and builders. Harry Richard Trigg came to Hayling in the 1850s and lived there until his death in 1902. He was responsible for some fine buildings such as Westfield House, the Victoria Hall and the gasworks, and served as Lifeboat Committee secretary and Conservative agent. The papers reflect many aspects of the involvement of H R Trigg, and his son Henry Frederick Trigg, in Hayling affairs, and include maps showing various pieces of land laid out for building, and copies of 1860s-90s large-scale Ordnance Survey maps of the Havant and Hayling area which were not previously included in our collections. A particularly interesting map shows Hayling Island in 1834; it was surveyed and engraved by J T and C Lewis of Winchester (135A09/C2/1). Other papers include an abstract of the title of Osmond Barnard to Hayling manor, written in 1871 and tracing the manor back to 1827 when it was owned by William Padwick (135A09/A18).

In March 1886 a Parliamentary Select Committee considering the expediency of confirming provisional orders for the regulation of Commons turned its attention to Hayling South Beach Common, and a verbatim account of the proceedings is included here (135A09/B4). Discussion ranged from the desirability or otherwise of allowing football on the common to local people's worries that they would be prevented from catching birds. The witnesses included Robert Few, solicitor to J C Park, lord of the manor, who reported a comment made by the late Sir Joseph Paxton to the father of Sir Thomas Brassey, 'Brassey, I was some time since lying off Hayling in a yacht, and came to the conclusion that there is something very great to be done there' – a sentiment with which the Triggs would have heartily agreed.

Forthcoming events

Exhibitions, in the Record Office foyer

7 Jan-31 Mar: **'1961 and All That: Hampshire's Census History'**: the history of the census in Hampshire from Victorian times to the present day, featuring parts of the computer that (at Worthy Down near Winchester) was the first to be used to analyse census data electronically, in 1961.

5 Apr-28 Jun: **'The Enchanted Country'**: the extraordinary world of Ursula Moray Williams, local author of *Gobolino the Witch's Cat* and *Adventures of the Little Wooden Horse*: a centennial celebration. This exhibition will also be on show in Petersfield Museum, probably from 5 Sep to 22 October, and a smaller version should be displayed in Eastleigh Museum in the summer.

In the Allen Gallery, Alton,

26 Feb-26 Mar, (and in the Record Office foyer Jul-Sep - exact dates to be confirmed): **'From Disabling to Enabling'** a vision of Treloars – part of Treloar 100+, led by Hampshire County Council and working with students from Treloar College in a Legacy Trust UK project which aims to recognise the South East's role as the birthplace of the Paralympic movement at Stoke Mandeville and to foster public understanding of the story of disability creatively through local archives and museums.

In the Record Office's top floor gallery,

3 Mar-16 Apr: **'The Story of Enham Alamein'**: the history of Enham Village and the Enham Charity, opened in 1919 as the first village centre for disabled ex-servicemen, presented by the Enham Alamein Community Heritage Project.

Lunchtime lectures

Last Thursday of each month, 1.15-1.45pm, free, no need to book

31 Mar: **'Crunching the numbers'**: from vellum to the push of a button – by a speaker from the Office for National Statistics, charting the changing technology of census compilation through the centuries

28 Apr: **'Through the Magic Door'**: the extraordinary life and work of Ursula Moray Williams, local author of *Gobbolino the Witch's Cat* and *Adventures of the Little Wooden Horse* – by Colin Davison, author of a recent biography

26 May: **'A Family of Correspondents'**: the Bradby papers – by David Lloyd

30 June: **'Mary Bacon's World'**: a farmer's wife in 18th-century Hampshire – by Ruth Facer

28 Jul: **'The rise of Sir George Staunton's estate'**: a history of Leigh Park – by Steve Jones

Ursula Moray Williams centenary: special event

To complement our exhibition about the life of children's author and illustrator Ursula Moray Williams, we have arranged an evening event on Wednesday 11 May, 7pm-9pm. Colin Davison, who has recently completed a biography of Ursula Moray Williams, will speak about her links with Hampshire – including her early childhood in Petersfield, her training at Winchester School of Art, and her years from the age of 11 spent at North Stoneham Park, between Eastleigh



North Stoneham Park, Ursula Moray Williams's childhood home.

and Southampton, a magnificent, yet unfinished and dilapidated, mansion set in magical grounds (Fig. 1), which inspired such books as *Bogwoppit* and *Grandpapa's Folly* and the *Woodworm-Bookworm*. Harry Willis Fleming will set this in the context of the story of North Stoneham House, built for his family in the first half of the 19th century. Light refreshments will be available, there will be a chance to meet two

of Ursula Moray's sons, get copies of the biography signed by Colin Davison, and see an additional display. Booking essential – please ring 01962 846154 for details.

Beginners' evenings and Lunch and Learn

Our beginners' evenings help you start family history research. Booking required, £7 each. Please enquire for dates.

Our 'lunch and learn' sessions offer you a chance to try reading old handwriting in English documents – and, if you like, to bring along a copy of a document you are having trouble reading, for the group to try (no booking needed). 1-2pm on the first Friday of each month: 1 Apr, 6 May (Latin special) and 3 Jun.

For more information about events, please ring 01962 846154 or visit the website.

Hampshire Record Office Cinema now available for hire

The cinema is available for hire by external groups for meetings and presentations. Seating 80 in fixed raked seating, it has a cinema screen and projection room with a wide range of audio-visual presentation facilities. It is located within the iconic Hampshire Record Office building, adjacent to Winchester railway station and the Park and Ride bus stops, and changing displays of archive images on the landing gallery provide an historic backdrop. Please contact us for more information.

Archives donor card

We are sure that many of you have in your possession archive material relating to members of your family or organisations with which they have been involved – perhaps letters, diaries, photographs, cinefilms, audio recordings, title deeds or business records. We are of course always very pleased to hear from anyone who is interested in placing material in our care now – either as a gift, or as a long-term loan so that you can retain ownership. However, we understand that some of you may wish to keep the items in your possession for the time being – but have you thought whether anyone will take the same care of them when you are no longer able to look after them?

We have so often received wonderful archive material which has had a narrow escape from a skip or a bonfire, and we are all too well aware that there are many documents which have not been so fortunate. We have produced an 'archives donor card' which you could place with any archive material you think could be of interest to future generations, which could make your executors aware that you would like them to be offered to the Record Office. If you would like one or more cards for yourself or for other family members or friends, please contact us and we should be delighted to send you some.

Treloar 100+

The award winning Treloar 100+ project continues to gather momentum and develop. Hampshire County Council's Archives & Records and Museums & Arts services are working in partnership with Treloar's Physically Disabled School and College in Alton to reinterpret Treloar's past. Archivists from Hampshire Record Office have worked with college students to re-evaluate the Treloar archive, which dates back to 1908 when the Lord Mayor of London, Sir William Treloar, founded a hospital and school outside the city for children with non-pulmonary tuberculosis. An artist-in-residence has also worked with students to explore the archives and create a new body of work for the exhibition.

Oral history recordings of former staff and students

have taken place and contemporary photographs taken, which will be added to the archives for future reference. Educational study packs have been created which can be used at storytelling events taking place at local schools and the Allen Gallery in March. An exciting exhibition will bring the project into the public

domain, starting at the Allen Gallery in Alton (26 Feb-26 Mar), moving on to Hampshire Record Office and Treloar College itself. The exhibition looks at the history of disability over the last 100 years as well as the story of Treloar's. For more information see: www.hants.gov.uk/archives www3.hants.gov.uk/museum/allen-gallery and www.treloar.org.uk

book reviews book reviews book reviews book reviews book reviews

Margaret Baskerville, **Rural Life in the Dun Valley 1066-1900**, privately published, 2010; pp.vi+211, £9.95+£2.50 p&p from Margaret Baskerville, Owl's Castle, Easton Common Hill, Winterslow, Salisbury SP5 1QD.

The river Dun is a tributary of the river Test, which it joins at Kimbridge north of Romsey. Several villages and hamlets grew up along its course in the Anglo-Saxon period, including Lockerley and East Dean in Hampshire and West Dean and East Grimstead in Wiltshire. This attractively produced and well-illustrated book describes the main features of the area, which extends northwards to East Tytherley. The medieval landscape was carefully managed to provide inhabitants with open arable fields for crop production, pasture for livestock, woodland for building materials and fuel, and deer parks for hunting. The river also powered several water corn mills. The area's landowners are discussed from Domesday Book to the 19th century, and successive chapters highlight themes such as religion, enclosure, the Swing riots, water meadows, population change, law and order, poor relief, education, and transport. Three chapters focus on particular types of source material to shed light on local conditions: probate inventories, post-medieval manor court rolls, and the 17th-century accounts of an estate bailiff. The author provides much useful information about this small corner of the county, demonstrating a rural way of life little different from many other parts of Hampshire and regions further afield.

Mark Page

Bob Clarke, **The Basingstoke Riots: Massagians v The Salvation Army 1880-1883**, Basingstoke Archaeological & Historical Society, 2010; pp.vi+138, £10.

In the early 1880s Basingstoke was the scene of serious riots between the newly arrived Salvation Army and a significant minority of the town's population. The Salvation Army's message of temperance was not welcomed in a town with four breweries and some 50 pubs and beer houses, and the prohibitionists' cause was further hindered by the fact that the magistrates who heard repeated allegations of violence and intimidation against the Army included several men who were involved in the brewing industry. Bob Clarke successfully recreates the febrile atmosphere of a town divided between two opposing and intransigent forces, using the testimonies recorded in contemporary newspaper reports, the minutes of court cases, correspondence with central government, and parliamentary debates. News of the Basingstoke riots spread across the country, and may have encouraged hostility to the Salvation Army elsewhere. However, after three years of street fighting, the animosity between the Salvationists and their opponents (known as the Massagians) gradually subsided into an attitude of

mutual indifference. This is an excellent work of local history, describing an unusually turbulent episode in the life of a small Victorian town, which may both surprise and shock. Evidence is presented of wilful and brutal violence and destruction against persons and property, of the incapacity of the police to keep the peace, and of economic interests subverting the rule of law.

Mark Page

Peter R Watkins, **Villages of the Meon Valley: Aspects of their History**, privately published, 2010; pp.xiv+274, n.p.

The 22½-mile course of the river Meon in south-east Hampshire takes it through the villages of East Meon, West Meon, Warnford, Exton, Corhampton, Meonstoke, Droxford, and Soberton, and the small towns of Wickham and Titchfield, before it drains into the Solent at Titchfield Haven. All these places are treated in this new history of the district from prehistoric times to the present day. The book is attractively produced, with numerous well chosen illustrations, and is the third in a trilogy of volumes on the area written by Mr Watkins. Its predecessors – *Swanmore since 1840* (reviewed in Newsletter 38) and *Bishop's Waltham: Parish, Town and Church* (see Newsletter 50) – were mainly institutional histories of individual communities. The same approach is adopted in this book, though across a much wider area. Subjects covered include poor relief and the workhouse, the Anglican church and Nonconformity, education, enclosure, transport including the Meon valley railway, parish and district councils, sport and leisure, and landownership.

Surprisingly, however, there is no chapter devoted to agriculture, the dominant industry in this as in other parts of rural Hampshire until the 20th century, although there are useful discussions of the development of water meadows and strawberry-growing, both of which peaked around the time of the First World War. Hints of agriculture's importance to the local economy are mentioned in passing, such as the 80 men living at Warnford who were employed as agricultural labourers in 1881, a fifth of the total population, while many others were engaged in associated trades. But there is little information about types of cropping, herds and flocks, the number and size of farms, forms of tenure, common rights, or the marketing of produce, all of which would have helped to put the institutional history of the area into its proper economic and social context. Despite these criticisms, Mr Watkins has made a significant contribution to our understanding of south-east Hampshire, and has produced three books of which he can be rightly proud.

Mark Page

Identifying their 'Main' Priorities

Malcolm Walford

Introduction

The first 10 years of the 20th century witnessed an enormous growth of motor vehicles, both private and commercial, on the country's roads. These may have been good enough to carry horse-drawn traffic but, after 50 years or more of under-investment and disinterest by central government, were quite inadequate to satisfy the demands of the new age of mechanical transportation and the needs of industry. Between 1907 and 1909 a national campaign was waged by the Roads Improvement Association and the national press for better roads. The government created the Road Board which was constituted on 13 May 1910. This article looks at the way Hampshire's County Surveyor seized the opportunity provided by Road Board funding to reorganise the administration of Hampshire's main roads, to make them 'fit for purpose', and to find more effective ways of presenting information to the Main Roads and Bridges Committee (MRBC).

Background

The arrival of the railways around the 1840s caused a quite rapid decline of toll income on most of Hampshire's turnpike roads. When a report was made to the Secretary of State in 1852 nine turnpike trusts showed an income reduction of more than half in the period between 1834 and 1850. The amount of money spent on the upkeep of the county's main roads continued to decline. In 1837 the average annual amount spent by 35 trusts on turnpike maintenance in Hampshire was £25 per mile, by 1850 this had dropped to £12, and in 1860 and 1870 remained at £10 (*Fig. 1 - on inside back cover*). Although use of the main roads had declined, except where they served railway stations or local market towns, a county average of £10 per mile was totally inadequate to repair the damage caused by winter storms, snows and frosts, and, in the second half of the century, the damage done by traction engines, which weighed up to 20 tons or more, and were used for haulage.

Lack of space does not permit a history of legislation brought in to control mechanised vehicles nor the various Acts passed to improve the fairness and funding of the maintenance of water-bound road surfaces of flint, gravel or limestone.

Important road legislation was passed in 1878. The Highway and Locomotives (Amendment) Act, defined a 'main' road.¹ By this date most of the turnpike trusts had been wound up and the burden of road maintenance had fallen back on local authorities. This Act recognised the unfairness of the financial burden on the parishes through which main roads passed and made the county, through its justices in Quarter Sessions, responsible for a contribution of half the costs of repair, subject to inspection and approval by the county surveyor. New main roads could be created and equally roads could be 'dis-mained'.

Ten years later the 1888 Local Government Act recognised that highway boards were unable to cope with the continued growth in steam-driven vehicles or

the ongoing unsatisfactory state of the country's roads. Responsibility for Hampshire's main roads was taken away from the local highway authorities and vested in the newly created county council, who delegated the work to the 23 rural districts. The new arrangements 'had evil results upon the standard of highway administration'.² The cost of maintenance of the main roads was therefore a charge on the county rate and it should be noted that no mention has been made of 'improving' the main roads.

Then came the motor car and the county surveyor's problems and financial burden on the county increased. By 1908 annual expenditure on the county's main roads had increased to an average of £78 per mile. In his 1911 report William Taylor informed the MRBC that 'a traffic census taken in 1910 over 7 days at 19 points in July on Hampshire's trunk roads found that 42.3% of journeys recorded were made by self-propelled vehicles'.³

The Road Board

The rapid growth in motor vehicle ownership from an estimated 51,000 in 1904 to nearly 124,000 in 1907, allied with a big increase in steam traffic, created road problems which were beyond the means of local government to solve; much of the growth was in long-distance traffic. There was a national outcry for cleaner, hard-wearing road surfaces to allay the dust problem caused by ever faster and heavier traffic on roads totally unsuited for it.

The Development and Road Improvement Fund Act created a national fund from the net proceeds of duties on petrol and motor car licence duties which would be used by the newly formed Road Board to make advances, by way of a loan or grant, to county councils or other highway authorities to construct new roads or improve existing ones or the Road Board itself could construct and maintain new roads.⁴

The County Opts to Take Control

Although the county council had overall responsibility for main roads since 1888,⁵ they had no direct control over the activities of the district councils who had opted to maintain their own sections of main roads. This had resulted in a highly variable and merely local approach to the maintenance of important through routes; one district could completely disregard the needs of its neighbour and the requirements of county boroughs. Roads would be repaired as cheaply as possible.

W J Taylor was determined to use the opportunity provided by the 1909 Act to apply a consistent policy of road surfacing, improvements and funding which was both suited to the volume of traffic, the ranking of the main roads, and the planning for the future highway needs for the whole county. He persuaded the MRBC to propose to the county council a major administrative change. The maintenance of main roads previously delegated to district councils would be taken back by the county after 31 March 1912. The full council agreed and a letter was sent out to that effect.⁶

At a stroke the County Surveyor could now recommend resource priorities for all of Hampshire's

main roads but he needed to find a better way of presenting complex information to the MRBC. Reports and financial estimates had previously been presented by district, which presented only a fragmented picture of the main road system. Now this method was to be abandoned. He introduced a system of road numbering which had been done 60 years earlier for the county's turnpikes by E P Bouverie in 1852.⁷ Not only would a main road numbering system be important for reporting to the MRBC but also for applying for grants from the Road Board. Each district had several main roads running through it and it had previously been extremely difficult for members to grasp the relative importance of various routes. Taylor came up with the concept of numbering which took the line of a road, such as Camberley, Basingstoke and Winchester, to identify its geographical significance, its commencement and termination, its route, and therefore an indication of the traffic on it. An annual census measured changes in the use of the main roads.

He numbered 45 routes, totalling 542.19 miles. These were identified on a map, a copy of which was attached to his annual report for the year ended 31 March 1912.⁸ This map (*Fig. 2 - on inside back cover*) was shorn of all side roads to focus the attention of members on their responsibilities. It will be noticed that the county is divided into four divisions, railway routes are shown, as are distances in 5 mile intervals from Winchester. He showed the old turnpike roads in red and main roads in black. Roads mained after 1878, such as route 20 from Rowlands Castle to Hayling Island or route 16 between Christchurch, Ringwood and Salisbury may be readily identified; route 40 had yet to be mained between Titchfield and Park Gate. These route numbers would, until 1921 when a national road numbering system was introduced, be used to identify route priorities, census information, and past and planned expenditure.

Summary

1911 was a watershed year for Hampshire's main road system. Taylor and members of the MRBC were receiving many complaints from local authorities, cycling and motoring organisations, and commercial interests about the condition of Hampshire's roads. Years of very inadequate road expenditure had left the roads ill-prepared for the rapid growth in volume and weight of traffic, much of its passing through the county to the west, and to the Midlands and London from the ports. A drastic change was necessary. The surfaces urgently needed strengthening and tarring to relieve

the appalling dust problem caused by motor traffic. In the 1912 annual report Taylor also produced a chart,⁹ showing average levels of annual expenditure on main roads between 1834 and 1913, to remind members why the main roads were still in such poor condition after years of quite inadequate funding (*Fig. 1 - on inside back cover*). The MRBC and their county surveyor seized the opportunity to improve the situation, but unfortunately the war intervened, and the Road Board was also 'dead against making any new roads at all';¹⁰ no by-passes to relieve the increasing congestion in Hampshire's towns and villages were built until after the creation of the Ministry of Transport in 1919.

Acknowledgements

The author is indebted to Mr J Ekins, a former Hampshire County Surveyor, for the loan of his copy of Taylor's 1912 Annual Report and to Carol Morgan at the library of the Institute of Civil Engineers for information about W J Taylor.

Notes

- 1 41 & 42 Vic. c 77. Definition: roads disturnpiked after 31 Dec. 1870, disturnpiked since the passing of the Act, and roads declared as main roads by the county authority.
- 2 *The King's Highway*, p.7. Rees Jeffreys was Secretary to the Road Board 1910-18.
- 3 William James Taylor, M.Inst.C.E. 7 May 1889, OBE 1920; b. 28 Feb. 1864, d. 6 Oct. 1936; Hampshire's county surveyor from 1897 to 1933, having been promoted on the death of James Robinson, Hampshire's county surveyor since 1888.
- 4 9 Edw. VII c 47.
- 5 On p.8 of his report Taylor described some of the main roads as 'approaching or were actually in the condition of derelict tracks'.
- 6 'The change was not carried out without considerable opposition from the District Councils': J S Hall (Acting County Surveyor and in 1911 the first divisional surveyor for the SE) in his Annual Report 1942.
- 7 HRO Q26/1/3 & 4.
- 8 Dated 1912 and printed on paper, it measured 24.5 inches (62.4 cm) broad and 20 inches (50.8 cm) high and was lithographed by Shaw & Sons of London.
- 9 The published chart measured 25.5 inches (65 cm) by 13 inches (33 cm); missing from the chart are two figures for 1912 (£113) and 1913 (£115) being the estimate per mile of the Road Board contribution (fig. 1 in the 1912 Annual Report).
- 10 *The King's Highway*, p.34.

Sources

HRO Q26/1/3 & 4 Turnpike Trusts County Report No. 4 Hampshire.
 HRO H/CX1/31/5 Minute 2260 of the Main Roads and Bridges Committee.
 County Surveyor's Annual Report 1912 & 1942 (privately held).
 W Rees Jeffreys, *The King's Highway* (1949), ch. 4 'The Story of the Road Board'.

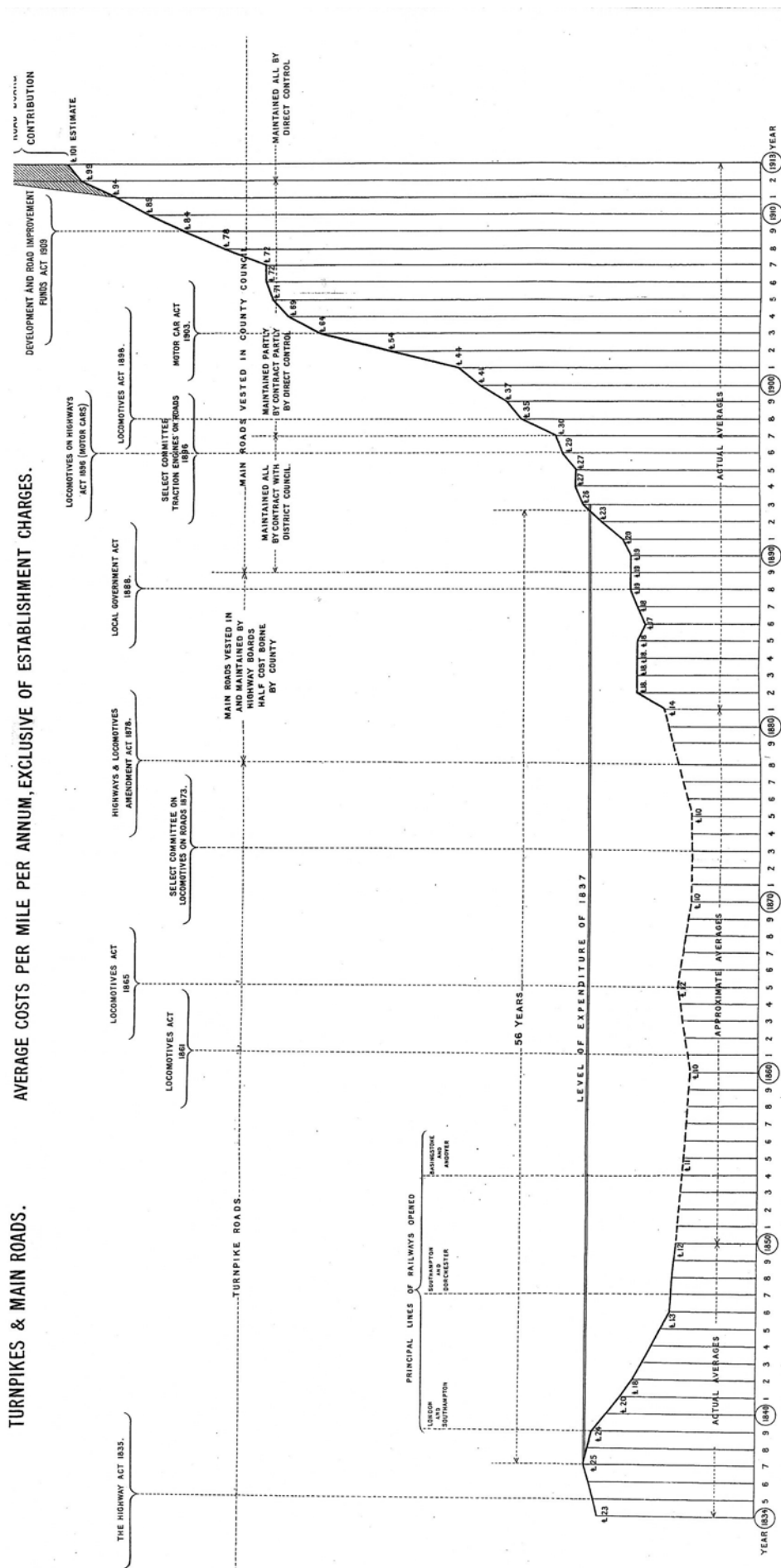


Fig. 1 Annual expenditure on Hampshire's main roads 1834-1913



Programme of Events

March - December 2011

- 9th April - Saturday - Local History Section
Spring Symposium, *Entertaining Hampshire* at Hampshire Record Office
- 28th May - Saturday - Historic Buildings Section
Visit to Arts and Crafts buildings at Steep.
- 4th June - Saturday - Landscape Section
Visit to Mapledurwell.
- 11th June - Saturday - Historic Buildings Section
Visit to Arts and Crafts buildings at Steep.
(NB. This will be a repeat of the visit on 28/5/11.)
- 25th June - Saturday - Local History Section
Summer outing to Selborne
- 31st July – Sunday - Landscape Section
Visit to Kingsclere to look at medieval & post-medieval buildings.
- 1st October - Saturday - Local History Section
Visit and AGM. Tadley .
- 15th October - Saturday - Landscape Section
Conference & AGM. *Comparisons between Hampshire & Dorset Landscapes.*
Venue to be confirmed.
- 19th November - Saturday - Archaeology Section
Conference and AGM. Venue & theme to be confirmed.