

EXCAVATION OF AN IRON AGE AND ROMANO-BRITISH SETTLEMENT AT RUCTSTALLS HILL, BASINGSTOKE, HAMPSHIRE, 1972-5

By MARY OLIVER AND BARBARA APPLIN

SUMMARY

The site was discovered through air photography. Area excavation in advance of building development revealed three distinct periods of agricultural settlement associated with ditched enclosures and timber buildings. Period I was middle to late Iron Age with a kite-shaped ditched enclosure with storage pits and circular timber houses. Two phases, one ca 5th-3rd and the other ca 3rd-1st century BC are distinguished. Period II was early Roman with sub-rectangular enclosures. Period III was late Roman, 3rd-4th century, with an enclosure following Iron Age ditches, and probable rectangular timber structures. Animal bones suggest a change from predominant sheep rearing in Periods I and II to cattle keeping in Period III. Iron slag was found in all periods, copper or bronze slag only in Period I. Possible relationships to numerous other local sites are discussed.

INTRODUCTION

Ructstalls Hill (SU 651515) lies to the south-east of Basingstoke immediately north of the M3 Motorway, at approximately 100 m OD on a gentle slope of chalk downland forming the east shoulder of a spur above a small dry valley where several other prehistoric sites are located (Fig. 1). Two of these sites (no. 3, Home Farm, Basing, SU 655512, and no. 4, 'Larch Plantation', Basing, SU 649506) are known only from air photographs by Fairey Surveys and Dr A. K. St Joseph and two (no. 2, Common Plantation, Basingstoke/Basing, SU 649511, and no. 5, Oaken Plantation, Basing, SU 657515) were partially excavated by the Hampshire County Museum Service in advance of the construction of the M3.

Patches of clay occur naturally on the Chalk, and flint nodules are plentiful in the area. The valley on the east is now dry in its upper reaches, but the springs which give rise

to Black Dam and the small tributary of the Loddon would almost certainly have been there in antiquity. The site is within 1.5 km of the junction, south-east/north-west, of the Chalk with the Reading Beds, which consist of a variety of clays and sandstones, notably a very hard quartzitic sandstone, known as sarsen. During the Pleistocene period, the Reading Beds sandstones were broken and scattered across the district by freeze and thaw, followed by melt water.

The site was bought from the Camrose Estate by the Basingstoke Borough Council (which became the District Council in 1974) as building land for town development. It was this threat, and the need to recover a full plan of this type of complex, common in the Basingstoke area, which prompted the Basingstoke Archaeological Society to undertake a rescue excavation. The site was discussed with Mr A. J. Clark (Ancient Monuments Laboratories) who was interested in surveying a site which was to be stripped and fully planned. The survey, by fluxgate gradiometer, showed all significant features (Fig. 2).

A trial excavation of areas A1, B1, B2 and C1 (Fig. 3) was conducted in 1972 to establish the nature of the site and to determine whether it justified a fuller excavation. It became clear that, as had been suggested by the air photograph and the survey, there had been several phases of settlement, whose relationship to each other and to neighbouring sites would be well worth elucidating.

In 1973 the Department of the Environment allocated a grant of £500 to the Basingstoke Archaeological Society for fuller excavation. This continued throughout 1973-4 and into 1975. An area of about 8,000 square metres was stripped of topsoil by

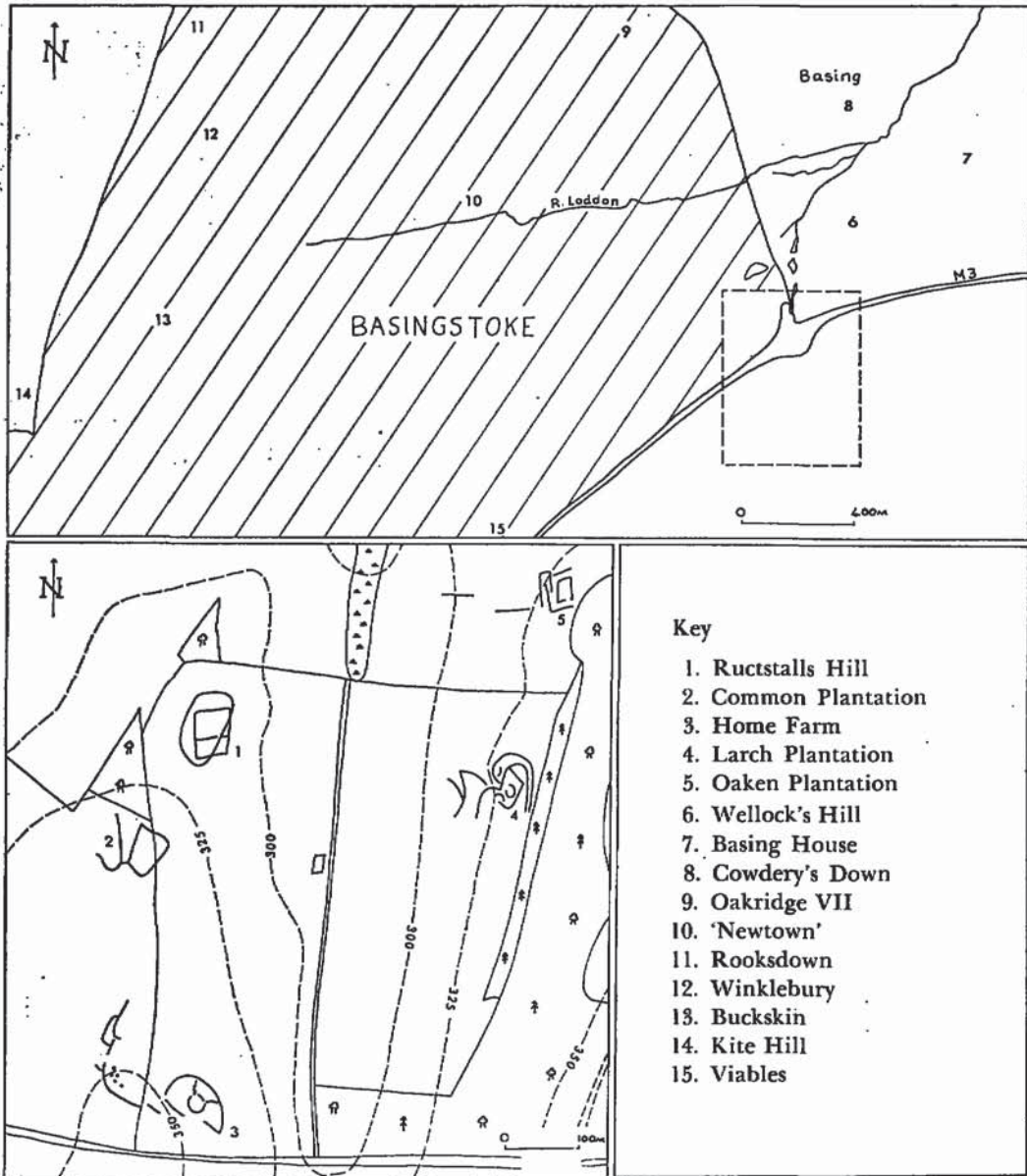


Fig. 1. Ructstalls Hill: Location map. Inset shows sites adjacent to Ructstalls Hill, M3 motorway is not shown.

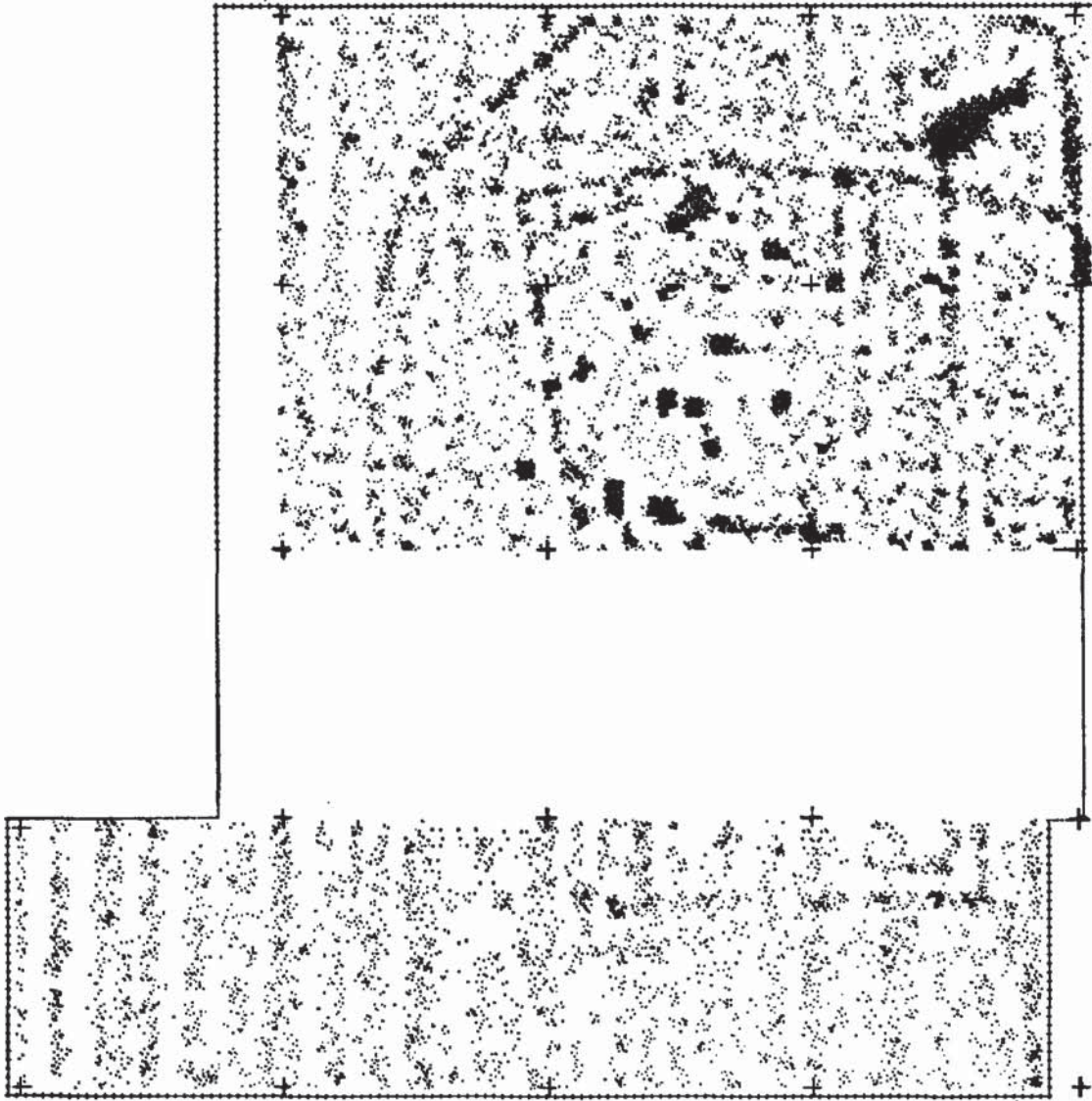


Fig. 2. Ructstalls Hill: Results of survey by fluxgate gradiometer (orientation as site plans).

a Drott excavator—this was not the ideal machine for the purpose but it was the only one that could reach the site by the access route which the Borough Council required us to use. It had been planned to strip the site in two stages, but when the first half had been stripped it was announced that building would

start the following year, so the remainder of the site was stripped immediately to obtain the total plan. In retrospect this was unfortunate as building did not in fact start on schedule and it would have been better to have dealt with a smaller area at a time. Fig. 4 shows the stripped area from the air.

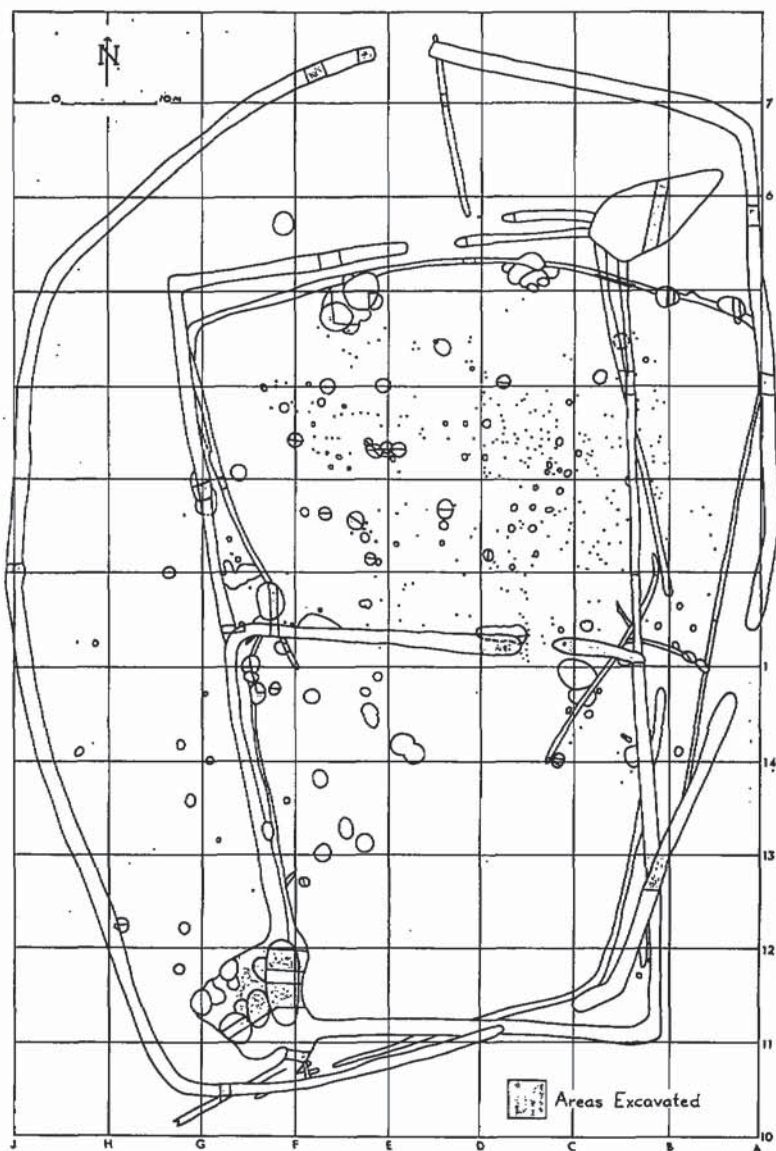


Fig. 3. Ructstalls Hill: Plan of excavated area.

Ructstalls Hill had previously been farmland worked on an arable-pastoral rotation as part of the Camrose Estate. The subsoil was chalk, with occasional solution holes and clay patches, and the topsoil was shallow, with an average depth of 0.15 to 0.2 m. Some downhill erosion had taken place and occasional plough scoring was visible on the chalk sur-

face. This erosion and ploughing had destroyed earthworks, ancient land surfaces and habitation levels, and stratified layers were recovered only from those features which were cut into the chalk.

Three main objectives were successfully pursued: to recover the full site plan; to establish the sequence of enclosures and their

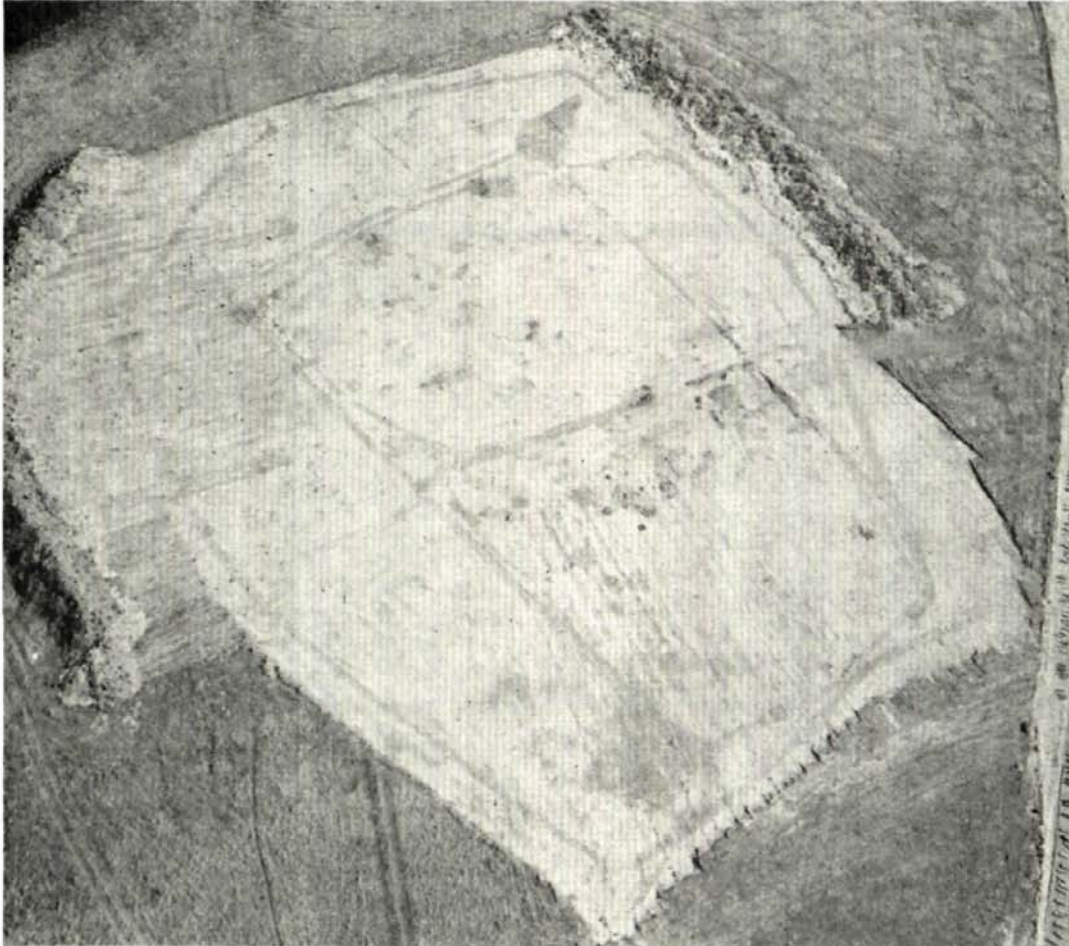


Fig. 4. Ructstalls Hill: Aerial photograph showing the site during excavation. (By courtesy of Royal Air Force, Odiham.)

dating; to section a selection of pits and post holes. Approximately a tenth of the feature area of the site was excavated. Of the pits plotted, roughly half were sectioned and finds from the surface cleaning of others gave a suggestion of date. The selection aimed to investigate apparently representative features and points of intersection, within the limits imposed by the area and time available.

Full excavation records, including section drawings and a list of features and their contents, are deposited with the finds at the

Hampshire County Museum Service, Winchester.

Compass points as used in this report are approximate, aligned with the site grid. True north is shown on Fig. 3.

RESULTS OF EXCAVATION

NEOLITHIC

A number of worked flints, thought to be Neolithic, were found during the course of the excavation. They were 9 end scrapers

(approximately 60 × 40 mm), 12 blade scrapers (approximately 45 × 20 mm) and 15 struck flakes. Mr G. W. Willis had already recorded Ructstalls Hill as a Neolithic flint-working site (Hampshire County Museum Service records). His finds, now held by the Hampshire County Museum Service, included a polished flint axe and a fragment of another, restruck to make a scraper.

IRON AGE AND ROMAN

The periods of Iron Age and Roman occupation as determined by excavation were as follows:

- Period I Middle-Late Iron Age
 phase IA 5th–3rd centuries BC
 „ IB 3rd–1st centuries BC
- Period II Early Roman
 phase IIA ca AD 45–70
 „ IIB ca AD 45–70
 „ IIC ca AD 70–100
- Period III Later Roman: late 3rd–4th centuries AD

Period I (Fig. 5)

The primary occupation was in the Middle/Late Iron Age. The evidence for occupation in phase IA was very much slighter than that for phase IB but a different ratio might have been seen if all the features had been excavated. It is not suggested that there was any break in occupation, simply that features categorised as IB are demonstrably later than those of IA. Period I features included the ditch and gully of a kite-shaped enclosure, pits of various kinds, four-post structures and smaller post hole structures.

Phase IA: The enclosed area of this phase was defined by a shallow gully, sectioned at Features 8, 63, 72, 75, 145, 232 and 233. Its course was not completely recovered in the area stripped—the southern side is missing—but it roughly foreshadowed the kite-shaped enclosure of the Period I ditch. Its relationship to that ditch is not known, although they crossed in the south-east corner, as the latter was recut in Roman times, but it is

likely that the gully (containing phase IA pottery) was earlier than the ditch. The horn-like gully in the south-west corner was suggestive of an antennae entrance. There was a definite entrance also on the western side and probably one in the south-east corner. The average dimensions of the gully were 0.6 m wide and 0.25 m deep; only on the northern side did it approach 1 m in width and 0.5 m in depth. Along the northern and western edge a series of irregular shallow pits were cut into the sides of the gully. Some were contemporary with phase IA and some with IB. Their character, unlike storage pits, suggests that they may have been quarry pits cut into the side of the gully while it was still open. The gully was not deliberately filled with rubbish.

Six pits can definitely be assigned to this phase (Table I and Fig. 6). Two were storage pits (one straight-sided, pit 92; and one 'beehive', pit 100) and four were irregular in shape, probably quarry pits for chalk as described above (pits 67/246, 112, 115, 245).

Phase IB: The Period I enclosure ditch was sectioned at features 62, 64, 66, 180, 223 and 227. It was recut in Roman times, so the bulk of the dating evidence relates to the later fill (Fig. 7). However, the lowest layers in all the sections cut yielded no Roman pottery and all had a few small pieces of grit-tempered pottery common in the other Iron Age features. This indicates that the ditch was originally cut to enclose the Iron Age settlement—whether in phase IA or IB is impossible to say. The ditch was between 1.1 m and 1.5 m wide and 0.6–0.8 m deep. No trace remained of any bank or fence. The ditch had entrances on the northern, southern and eastern sides. Any other entrances, if they existed, would have been obscured by the Roman recut.

All the deeper pits and some of the others were deliberately refilled with domestic rubbish, chalk debris, burnt flint, clay, etc. after fulfilling their original function (Figs. 8 and 9). These pits have been classified in Table I, where a distinction has been made between

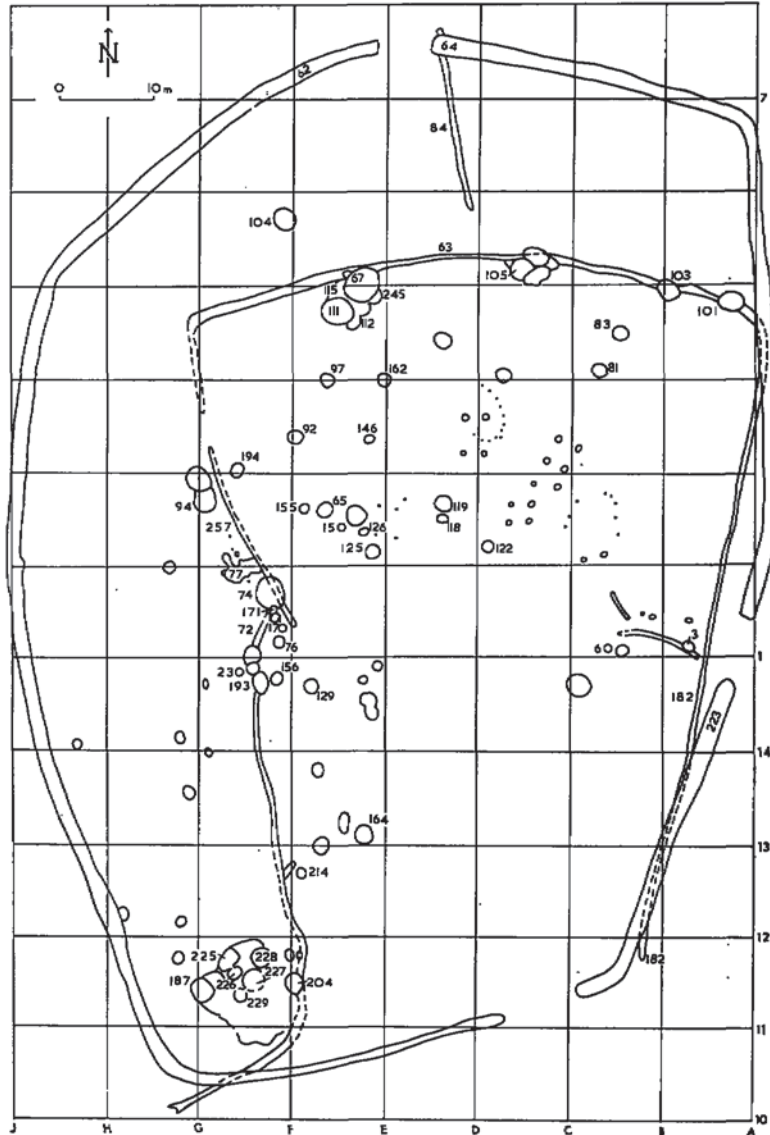


Fig. 5. Ructstalls Hill: Plan showing Iron Age (Period I) features.

IBi and IBii pits, based on the dating of the pottery from them. This does not necessarily indicate two stages of phase IB but merely the absence of the latest Iron Age pottery types from the pits categorised as IBi. Of the 29 phase IB pits, ten were straight-sided, five 'beehive-shaped' and six shallow. These were clearly storage pits of various kinds. Of the

eleven other irregular-shaped pits, two (IBii 74, 204) had a stepped profile, while the remainder were either chalk-quarry pits (IBi 111, 234; IBii 101, 103, 171) or so-called 'working hollows' (IBii 213, 224, 228, 229). These yielded only a few sherds and cannot be closely dated or assigned to a specific function.

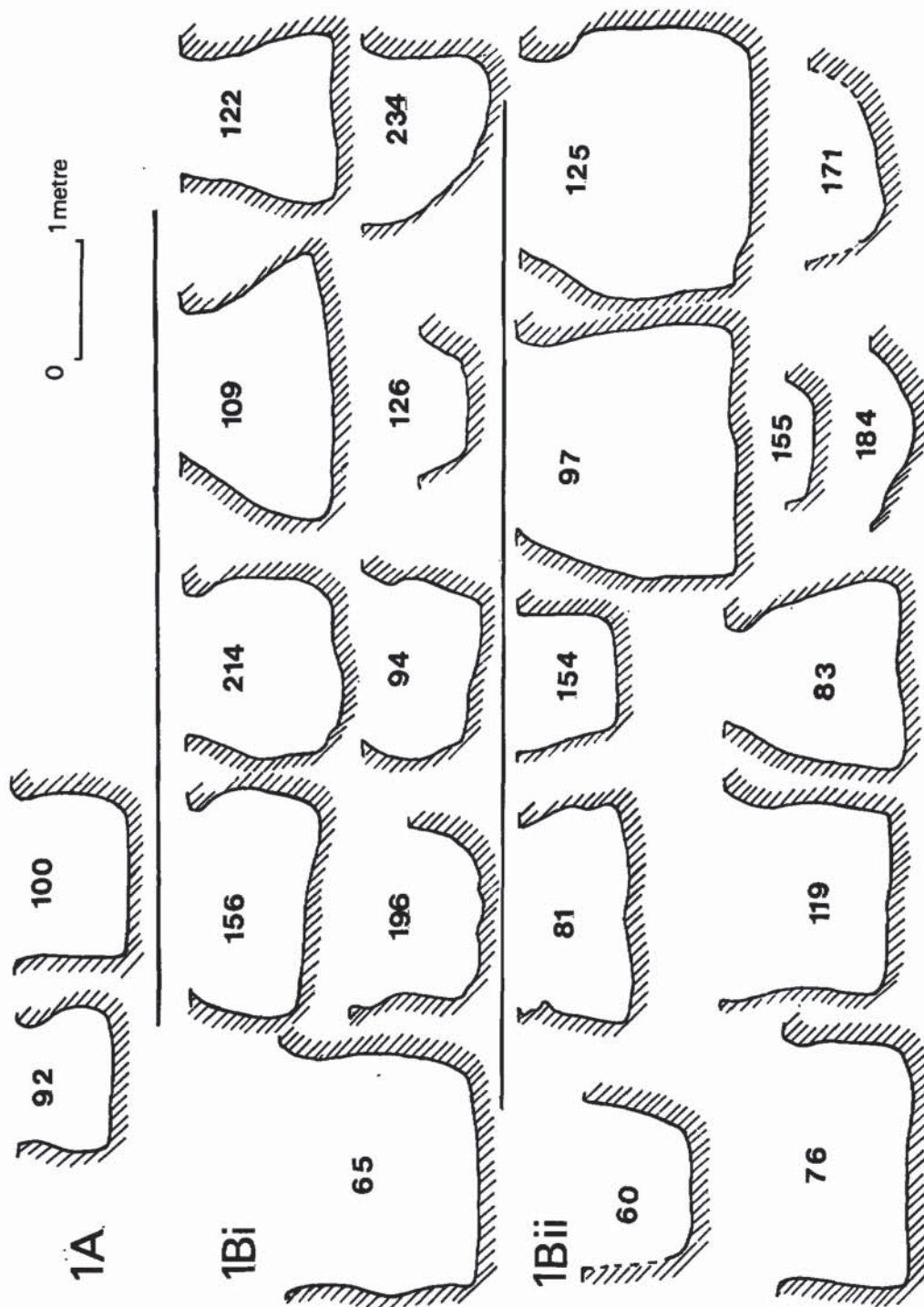


Fig. 6. Ructstalls Hill: Cross-sectional profiles of Iron Age pits.

TABLE 1: Iron Age pits

Shape	Phase			Totals
	IA	IBi	IBii	
Straight-sided	92	65, 156	60, 76, 81	11
		196, 214	119, 150	
Beehive	100	94, 109	83, 97	11
		122	125	
Shallow	—	126, 146	155, 184	6
			193, 230	
Stepped irregular	—	—	74, 204	2
			67/246	
'working hollows'	—	—	171	8
			112, 115	
	—	—	228, 229	4
totals	6	10	22	38

Post holes were numerous and not all were excavated. Most contained no finds but some could be attributed to phases by stratigraphical relationships and by comparisons of diameter and depth. Certain settings suggested structures. Erosion on the hillside probably removed some post holes and so might account for apparent gaps. There were five possible circular structures (Fig. 10):

A. c 8.5 m diameter, with post holes of 0.3 m diameter about 3 m apart; area B2/C2; post hole 123 contained Iron Age pottery and was cut by the phase IIB ditch (feature 11/70).

B. 9 m diameter, of smaller post holes 0.15 to 0.2 m in diameter and between 1.5 to 2.5 m apart; it overlapped circle A and could be either Period I or II but not contemporary with the Period I four-post structure.

C. 6.5 m diameter, with post holes of 0.15 to 0.2 m diameter about 1 m apart; area C2/C3; it cannot be contemporary with the Period I four-post structure.

D. about 9.1 m diameter with post holes of 0.3 to 0.5 m diameter, about 3 to 4 m apart; area D1/D2; it is very close to the phase IIC ditch and so perhaps unlikely to be Period II.

E. 6 m diameter with posts 0.15 to 0.2 m diameter, about 0.8 m apart; a semicircle of small post holes overlapping C and again overlapping the Period I four-post structures.

There were three large four-post settings in

areas AI (3 m square, nos. 9, 10, 14, 245), C3/D3 (3.8 m x 2 m, nos. 137, 139, 140, 141) (Fig. 10, no. I) and C2 (2.3 m square, nos. 87, ph 2, 114, ph 47) (Fig. 10, no. II) and a possible six-post setting in area C2/C3 (2.5 m x 2 m, nos. 88, 128, 96, 120, ph 3 and ph 4) (Fig. 10, no. III). These were the largest and deepest post holes on the site (average diameter 0.6–0.7 m, average depth 0.2–0.25 m into chalk). Most had large flints as packing.

Finds from Period I included pottery, mostly from pits, rarely bronze and iron though large amounts of iron slag were found in eleven pits listed in the slag report and smaller amounts of bronze slag (ditch 8). Other finds included several complete loom weights and fragments of others, together with two clay spindle whorls and one unfinished one of chalk, quernstone, bone handles and a bone gouge. The only human burial (Burial 5) in Period I was that of a child (pit 204,) but fragments of human cranium and human finger bones were also found.

Period II (Fig. 12)

The settlement consisted of a three-phase rectangular enclosure, dating from about AD 45 to 100.

Phase IIA (a brief phase within period AD 45 to 70.): A roughly rectangular enclosure 80–85 m long by 40–45 m wide, with a ditch 0.6 m wide by 0.3 m deep and with openings on the north, east and probably west sides. A length of internal ditch (178/34) is connected with this.

Phase IIB (ca AD 45 to 70): The phase IIA ditch was cut by the ditch, 0.8 m wide and 0.4 m deep, of a more nearly rectangular enclosure 85–90 m long by 40–50 m wide with an entrance on the north side. The southern half of the enclosure ditch was recut in phase IIC, which may have obscured an earlier entrance. Phase IIB must have followed very quickly after IIA, as the pottery gives almost the same date range in both cases.

Phase IIC (ca AD 70 to 100): A square enclosure, about 45 m across. The ditch, about 1.5 m wide by 0.6 m deep, had an entrance on

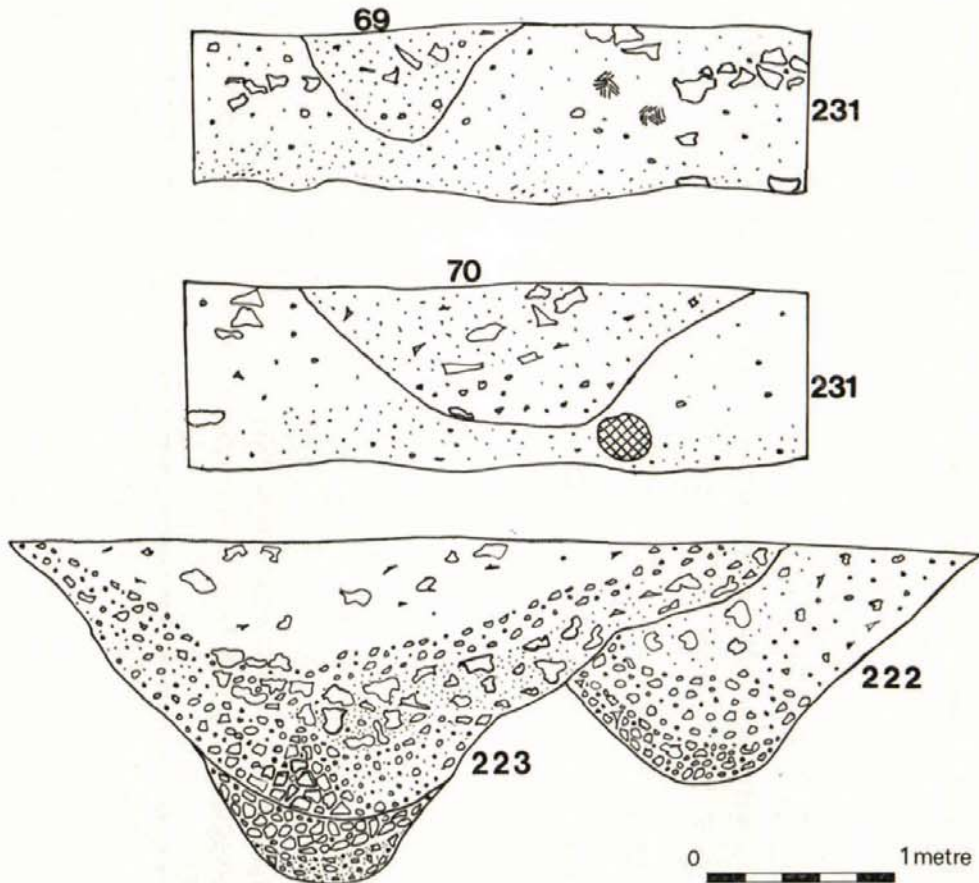
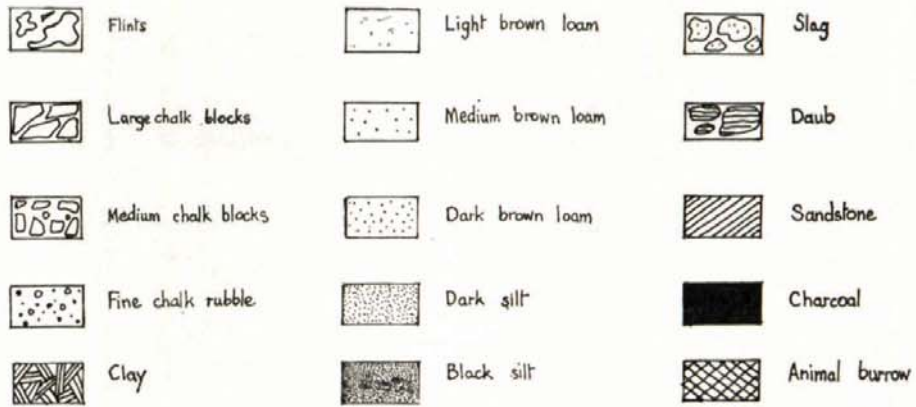


Fig. 7. Ructstalls Hill: Sections showing ditch 231 (phase IA) cut by ditches 69 (phase IIA) and 70 (phase IIB), and ditch 222 (phase IIC) cut by ditch 223 (Period III recut of phase IB ditch). Scale 1:20 (not as drawn).

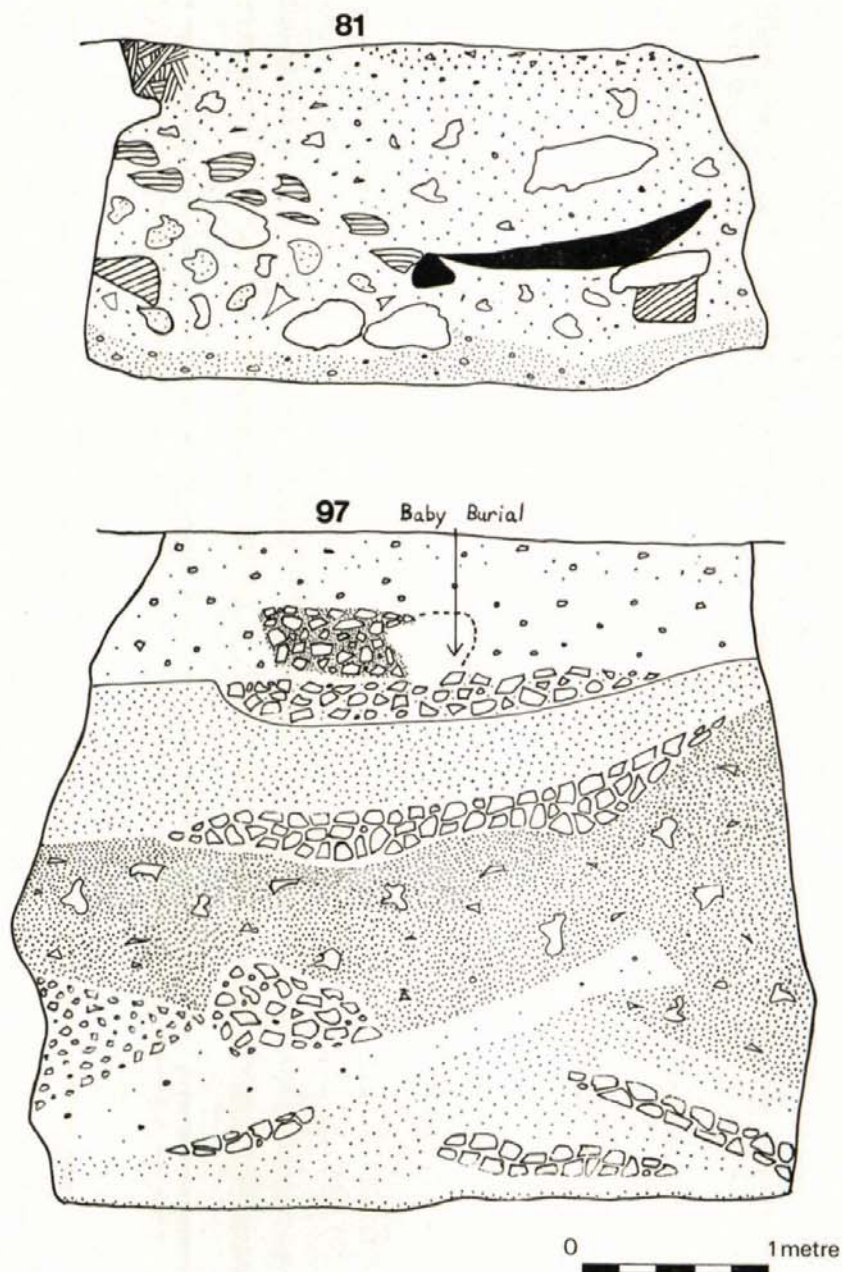


Fig. 8. Ructstalls Hill: Cross-section through pits 81 (phase IB) and 97 (phase IB, top filling Period III). Scale 1:20 (not as drawn).

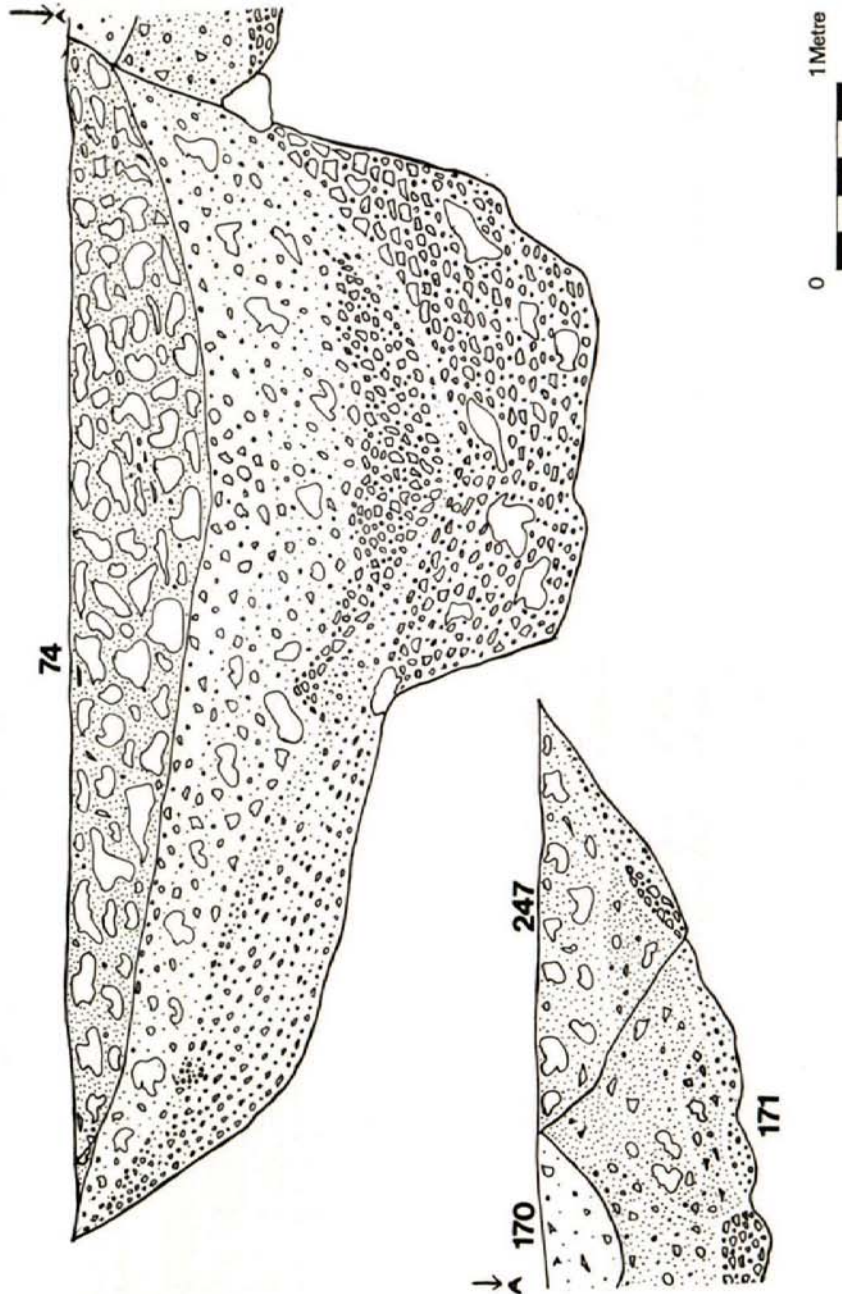


Fig. 9. Ructstalls Hill: Cross-sections showing pit 171 (phase IB) cut by pit 74 (phase IB, top filling phase IIC), ditch 170 (phase IIA) and ditch 247 (phase IIA). Scale 1:20 (not as drawn).

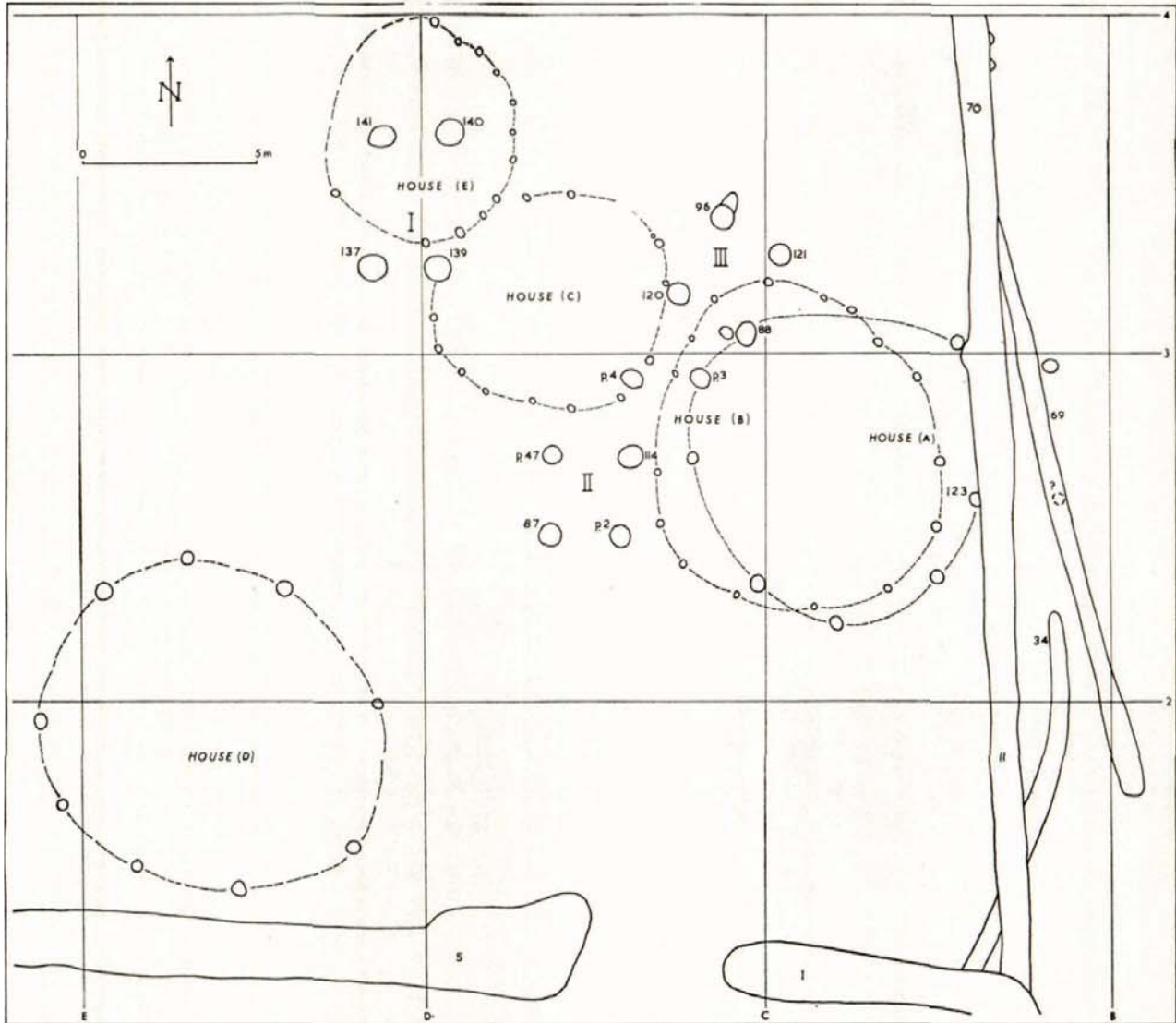


Fig. 10. Ructstalls Hill: Plan showing round houses (Periods I and II) and four-post structures (Period III).

the northern side and followed and deepened the line of the southern half of the phase IIB rectangular enclosure ditch. A line of post holes for a fence to screen the edge of the phase IIC ditch at the entrance where a series of pits were dug into it suggests that the enclosure was primarily for stock. The upper fill of all these enclosure ditches contained

deliberate infill—mainly flints and domestic refuse.

Of the pits excavated, far fewer dated to this period than to Period I. A group of four intersecting pits was cut into the partially silted base of feature 5, the phase IIC ditch. These were clearly not storage pits (their

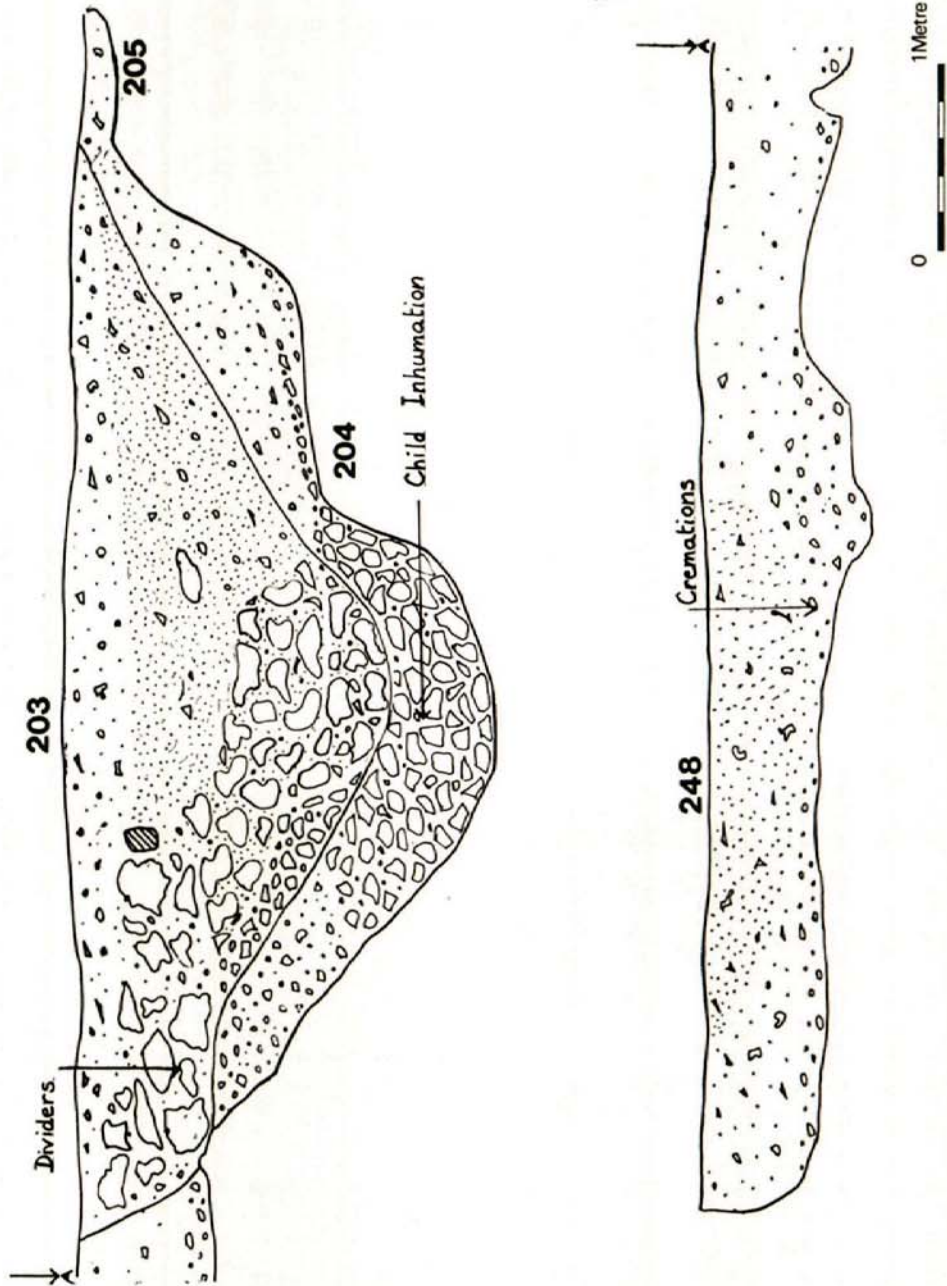


Fig. 11. Ructstalls Hill: Cross-sections showing ditch 205 (phase IA) and pits 204 (Period I) and 248 (Period II), both cut by pit 203 (Period III). Scale 1:20 (not as drawn).

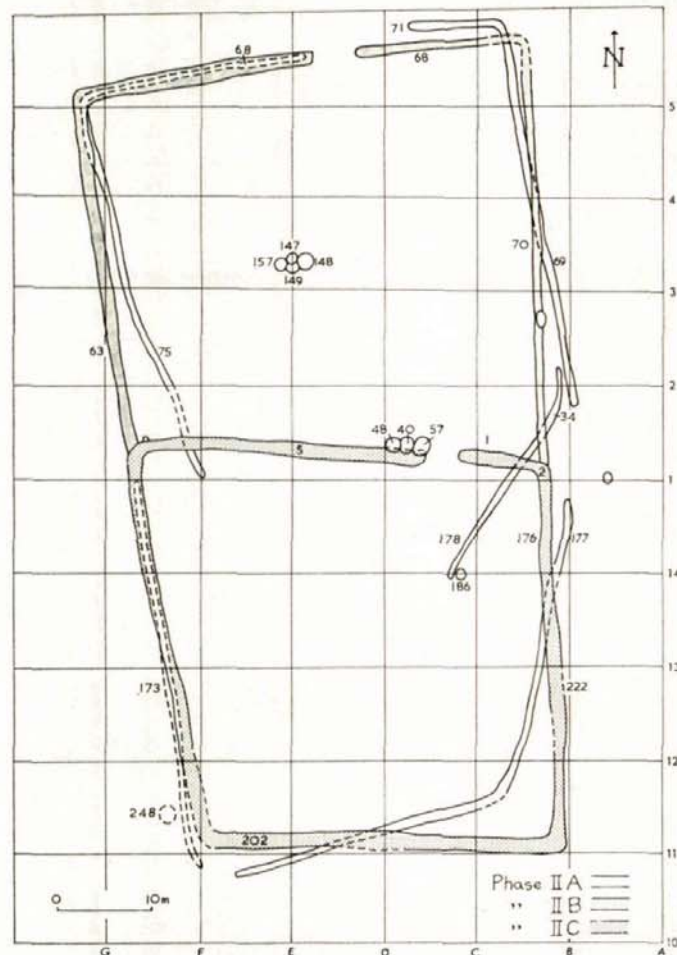


Fig. 12. Ructstalls Hill: Plan showing early Roman (Period II) features.

upper levels were probably open at the same time) and so, like the pits cut into the side of the Period I ditch (feature 63), they may have been quarry pits for chalk for making into daub etc. The pottery from these pits appears to be contemporary with that from the phase IIC ditch (about AD 70 to 100) and the fence of posts erected round the enlarged butt end reinforces this suggestion. A chalk rubble hump in the lower part of the ditch fill probably represented the upcast from the digging of some of these pits.

A group of intersecting pits (147, 148, 149 and 157) all contained Period II pottery and, although they were different in size and shape and the nature of their filling, they were roughly contemporary. Pit 146 appears to be Period I, and the others all had a mixture of Periods I and II pottery.

Pit 108 was cut by the ditch of phase IIB, so it was probably contemporary with the ditch of IIA. Pit 186 contained very little pottery but was probably early Roman. Pit 4

was an irregular pit, obscuring the junction of the Iron Age gully (phase IA) and a short length of gully at right angles to it. Pottery from this was mixed Periods I and II.

Other pits had a mixture of Period I and II pottery in their top levels. This can probably be explained by the gradual settling of the Iron Age fill of the pits, and the early Roman occupants levelling off the ground surface and disposing of their rubbish at the same time. There are no post holes which could definitely be said to belong to a Period II building. The problem lies in disentangling a Period II structure from the complex pattern made by the very many post holes in the northern half of the rectangular enclosure. The presence of quite fine daub—almost plaster—with narrow wattle impressions, in the fill of ditch 11 (phase IIB) possibly indicates a building in that region, perhaps structure B.

The pottery recovered from the Period II features—mainly from the ditches—represented a typical early Romano-British assemblage of about AD 45 to 100. It included large hard-fired grit-tempered storage jars, oxidised and reduced, with beaded or everted rim; wheel-thrown grey wares; carinated bowls; cordoned jars; platters and a few fragments of butt beaker and samian ware. Both bronze and iron objects were more frequent in this period than in Period I. They included mass-produced bronze brooches, many iron nails and some iron cleats. Pieces of quernstones and spindle whorls were also found. Most domesticated animal species were represented in Period II, with sheep still possibly predominant, though the sample is too small to draw any significant conclusion. Again, the bones appeared to be food refuse.

Two babies had been buried together in the fill of ditch 1 (phase IIC): Burial 1 in a crouched position, Burial 2 represented by a few duplicated bones. Burial 3, another baby, was packed into a small round depression at the base of ditch 5 (phase IIC).

Two adult cremations were discovered in

pit 248, part of the complex area in the south-west corner of the site which also included Iron Age quarries and Roman pits. The area is just outside the early Roman enclosure and, being disturbed, might well have been thought suitable for adult burial. No further burials were found, although the area was not completely investigated. Both burials were contained in sandy ware urns of typical early Roman form, one better preserved than the other (Fig. 19, no. 60).

Period III (Fig. 13)

The evidence for occupation in this period (late 3rd to 4th century AD) was much slighter than for the previous two periods.

The Period III ditch was sectioned at features 62, 64, 66, 130, 180, 223 and 227. The original Period I enclosure ditch had been recut and then refilled. The Roman recutting apparently followed exactly the line of the original Iron Age ditch, with a slightly shallower profile (about 1.5 m by 0.4 m deep). As with the Period II ditches, the upper levels had been deliberately filled with domestic refuse. The entrances were on the north, south and east sides, where the Iron Age entrances had been placed. A large feature (95) in the north-east corner, triangular in plan, had Roman material in the upper fill and was perhaps a chalk quarry. Lower levels were sterile so it is impossible to assign this definitely to a phase.

Apart from the top-filling of earlier pits (e.g. 65, 74, 97, 119, 126) and quarries in F11 (e.g. 217), which took place particularly in the area around the structure in E3, the only Roman pits were the group in F11 (213, 203, 220), all more than 3 m wide by 0.9 m deep; 213 may have been a cess pit.

A series of post holes in E3 might represent either a larger or a smaller rectangular structure (Fig. 14). Window glass was recovered from this area (ph 89) and fragments of grey ware from ph 93 in the structure. A quantity of broken tile from the butt end of ditch 62 (Period III ditch, north entrance) is additional evidence for a building in this area.

The pottery from this period included

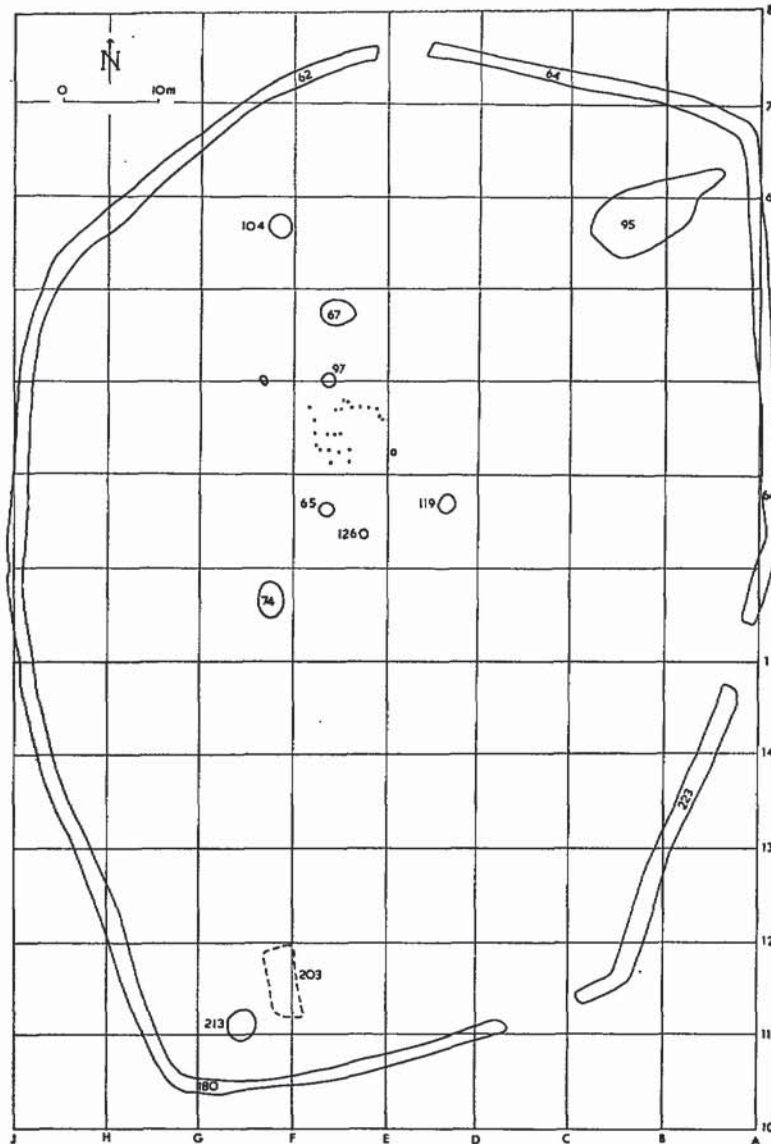


Fig. 13. Ructstalls Hill: Plan showing late Roman (Period III) features.

colour-coated sherds, flanged mortaria rims, pie-dish etc. There was much less pottery than from Periods I and II.

The five coins from Ructstalls Hill ranged from AD 293/296 to 335. The only two stratified coins were an Ae 3 URBS ROMA from ditch 64, layer 2 and an Ae 3 CONSTANTINE

II (ca AD 326) from pit 213, layer 2.

Jewellery included an undecorated bronze ring, twisted bronze wire with 13 blue glass beads, and a bone pin. Many sandal nails and two boot segs were found in the ditch fill. Iron nails were again common, and an ox goad from pit 203 indicates the use of draught

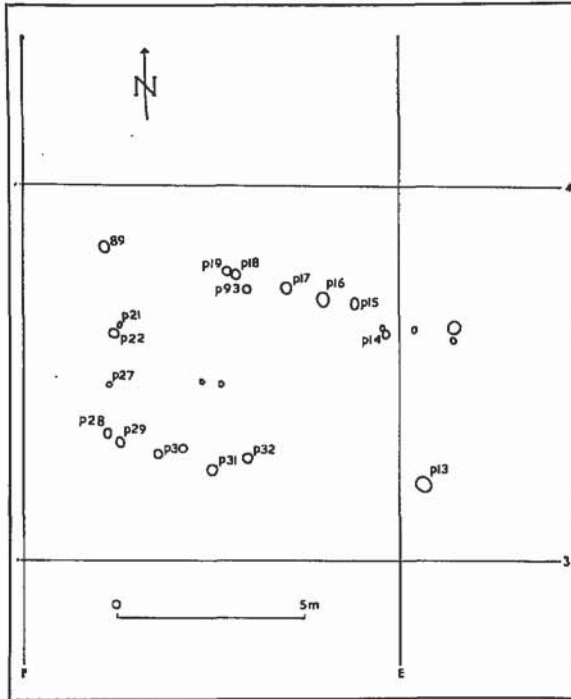


Fig. 14. Ructstalls Hill: Plan showing postholes of late Roman (Period III) rectangular structure.

animals. A large well-preserved pair of iron dividers or compasses was found in pit 203 (Figs. 25, 26).

The amount of animal bone was again small, but it suggested a change of emphasis from sheep to cattle. Roe deer were found for the first time at the site. No adult human burials were found from this period but Burial 4/5 in the top of pit 97 represented one baby.

THE FINDS

IRON AGE POTTERY, PETROLOGY,
by D. F. Williams

A small programme of petrological examination was undertaken on a selection of Iron Age sherds to try and determine possible sources of production for the pottery. Heavy mineral analysis was carried out on two

samples of the sandy wares, nos 1 and 2, but unfortunately not enough grains were obtained from the amount of sample available for a meaningful result (Smith 1977). In view of this, thin sections were made of seven of the sandy fabrics (including the two submitted to heavy mineral analysis) and four of the flint tempered ones. The results are as follows.

Group 1 (nos. 43, 44, 51 and 52): Thin sectioning shows an optically anisotropic ground-mass of fired clay containing numerous inclusions of crushed flint, up to 1.20 mm across, together with a scatter of subangular grains of quartz, average size 0.10 mm. A large group of flint tempered fabrics is perhaps to be expected from Ructstalls Hill, situated as it is on the chalk, and possibly represents locally made wares.

Group 2 (nos. 34, 35, 36, 57 and 58): Thin sectioning reveals numerous inclusions of well rounded light brown grains of limonite (probably altered glauconite), average size 0.20–0.30 mm, set in an optically anisotropic matrix of fired clay. Also present in each sample are small fragments of crushed flint and numerous grains of subangular quartz, average size 0.30–0.40 mm. If correctly identified, the glauconitic inclusions could have been obtained from the base of the Reading Beds in the region (White 1909, 42), the nearest deposits of which lie about 1.5 km north-east of Ructstalls Hill. Glauconite has also been identified by Williams in Group Three fabrics from the Iron Age site at Winklebury (Fig. 1, no. 12 and Smith 1977). Furthermore, Winklebury Group Three fabrics 7, 8, 17 and 20 are made up in part of similar stabbed decorated sherds to those illustrated as nos. 35, 36, 57 and 58 at Ructstalls Hill. It is not possible at this stage to say if both groups originate from one source, though it would appear likely that the local Reading Beds clay was being used for these fabrics. However, as glauconite is not an uncommon mineral, an origin further afield for these wares cannot be ruled out.

Group 3 (no. 1): The fabric consists of an optically anisotropic clay matrix containing

several inclusions of grog, crushed up fragments of pottery. Both the clay matrix and the grog contain numerous grains of sub-angular quartz, average size 0.10–0.20 mm. A small number of grog tempered wares is also present at Winklebury.

Group 4 (no. 2): Thin sectioning shows an optically anisotropic clay matrix containing numerous grains of subangular quartz, average size 0.20–0.30 mm, together with frequent flecks of mica.

Conclusions: It should be stressed that only a small percentage of the total number of sherds from Ructstalls Hill have been sectioned, also that the inclusions in all of those examined are fairly common. However, none of the eleven samples analysed contained raw materials that could not have been obtained from close to the site. A similar situation is apparent at Winklebury, where only one of the thirty-seven fabric types examined petrologically can be classed as a definite import to that site (Smith 1977).

IRON AGE POTTERY by Janet E. Richardson

Most of the Iron Age pottery came from the pits. The pottery from each pit has been treated as a single group.

Fabrics

These fell into two main groups, flint tempered wares and sand tempered wares. The varieties of fabric within these groups have been numbered with the letter F or S denoting the type.

Flint tempered: These contained flint and chalk inclusions.

F1. Almost invariably black surfaces with grey core, very hard and generally burnished. Angular, well-sorted white grits between 2 and 4 mm in size and in common to abundant frequency. Grits visible on the surfaces except where high burnish had been applied. Occasional variations such as rolled and multi-coloured grits and a red core. Used mostly for large storage vessels, e.g. no. 19, and black burnished

decorated wares, e.g. no. 43. (= Williams Group I).

F2. Very coarse with hackly fractures and abundant white or grey, well-sorted, angular flints between 4 and 8 mm. Pink/light orange throughout and never burnished. Vessels in this fabric always thick-walled, e.g. no. 27.

F3. Flint and chalk inclusions, well-sorted and abundant. Flint white to grey, angular and 2 to 4 mm. Occasionally black burnished.

F4. Fine 'terracotta' coloured paste with sparse to moderate inclusions of rounded flint grits of both small and medium size between 1 and 4 mm. Also evidence of organic inclusions which had burnt out on firing.

F5. Moderate to common angular white or grey flint grits of varying size between 1 and 4 mm; occasionally burnished and generally light orange.

Sand tempered: Although the predominant temper was always sand, this group also includes fabrics tempered with rolled grits, grog (5), grass/chaff (3), chalk (6). The nature of the grits and the basic sandy fabric suggest a number of sources off the chalk.

S1. Sand-tempered fabric with sparsely-distributed flint and chalk inclusions of small size between 1 and 3 mm. Hard fabric with smooth fractures, generally burnished on the outer surface, with colours largely confined to combinations of black and orange. Used in a variety of forms, commonly decorated, e.g. no. 13 and no. 53 (=Williams Group 2; Group 3 is a sub-group of S1 unrecognisable by the naked eye, e.g. no. 1).

S2. Soft with a moderate to common frequency of well-sorted small and medium white grits between 1 and 4 mm, some visible on the surfaces. Colours include sandy, buff and grey shades and some black burnishing. Frequently decorated, e.g. no. 42 (=Williams Group 2).

S3. Generally coarse, poorly fired and extremely friable, with some exceptions. Very heavily sand-gritted, with a sparse and uneven

distribution of large grit and chalk inclusions from 4 to 8 mm. Grits vari-coloured and water-rolled, often protruding from the surface of the pot, which was rarely burnished and ranged from a rusty colour to dark grey. Voids from burnt-out organic inclusions common and wipe-marks or brush strokes, perhaps made by a bunch of grass or straw, often visible on the surface. Small proportion well-fired. Commonly used for coarse storage vessels e.g. nos. 15, 21, 22, 24; and rarely decorated, e.g. no. 7 (=Williams Group 4).

S4. Sand-gritted with moderate to common occurrence of small to medium (1 to 4 mm) white flint and chalk inclusions, well-sorted. Soft, occasionally black burnished.

S5. Soapy-textured with smooth fractures, buff to dark brown, sparse to moderate ill-sorted inclusions of grog, 1 to 4 mm. Often burnished and generally used in barrel jar forms, e.g. no. 25 and no. 8.

S6. Similar in appearance to S3, ill-sorted, sparse, large sub-rounded grits, 4 to 8 mm. Also moderate to common occurrence of small white flint grits and some chalk inclusions. Often used in decorated pots, e.g. no. 50.

S7. Moderate and ill-sorted distribution of large angular and sub-rounded white and grey flint grits in fine sandy paste.

S8. Common to abundant amounts of well-sorted flint and chalk inclusions varying in size between 1 and 4 mm. Flint grits grey.

S9. Similar composition to S6 with very sparse, large, water-rolled pebbles, 4 to 8 mm, though small white, angular and rounded flint grits, 1 to 4 mm, not as abundant as in S6. Mostly used in such forms as no. 41.

Shell tempered:

SH1. Shell-tempered fabric, dark grey to black throughout. Fractures laminated, shell inclusions small, 1 to 2 mm, and abundant, all flat and aligned horizontally through the fabric.

SH2. Heavily sand-gritted with a sparse to moderate frequency of rounded flint grits, dark red or brown and 1 to 3 mm. Similar

frequency of crushed shell inclusions, some up to 8 mm but mostly small pieces 1 mm. Dark grey with a 'rusty' red outer surface resembling S3 in general appearance.

Chaff tempered: Heavily chaff-tempered ware used in the production of salt moulds. Buff to light orange.

Forms

There appear to be three main forms of vessel:

1. Straight-sided saucepan vessels, sometimes with slightly tapering walls, e.g. no. 32. The predominant fabric type used in the production of saucepan pots was the extremely coarse S3 ware, although a considerable proportion of S1 fabric was also used. Amongst the discernible saucepan pot forms ten different varieties of fabric had been used.

2. Barrel-shaped vessels whose general form may be either slack-bodied as no. 30, or round-bodied as no. 16. These forms may have either an incipient bead rim (no. 17), an everted lip (no. 26) or an incurving profile (no. 3). The S3 type of fabric was also the one commonly used for barrel jar vessels. Five other fabrics were used much less often.

3. Globular bowls, usually with an incipient bead rim, e.g. no. 42. Hybrid globular/barrel forms also occur. Rims mostly have an internal swelling of an incipient bead type, vertical or slightly everted. Six different fabric types were also used for globular bowls, though here the predominant type was FI. S1 and S2 were also often used.

Forms which do not fall into the above categories have parallels on sites with relatively early Iron Age assemblages, e.g. nos. 1, 2 and 4.

Decoration

Almost half of the pottery of identifiable form was decorated. 93% of the decorated pots were of sandy wares and fabric S1 in particular, although the S1 decorated pots only formed a tenth of the total of sandy wares. The remaining 7% of decorated ves-

sels, made of flinty ware, were all of black burnished F1 ware.

Simple burnishing has not been included as a form of decoration. A fifth of the pots of identifiable form were of black burnished wares, most of which were decorated. This form of burnishing seems to have been reserved for vessels of saucepan and globular bowl type, since it is never found on a barrel jar pot, except possibly on one sherd from pit 111 (no. 14).

a) Early: Several forms of pottery decoration seen at Ructstalls Hill may by analogy be assigned to an early phase of the Iron Age, including finger- and nail-impressions, cordons, furrowing, 'pie crust' rims, stabbed holes and the use of white inlay.

b) Late: Almost all of the designs are executed in blunt tooling, a feature seen as characteristic of the later Iron Age. The design of oblique tooled lines between rows of punched dots (e.g. no. 43) is found on pots from Berkshire and Hampshire and examples on the latter have been linked by Cunliffe (1974, 43) to stitching. The design is current from third to first centuries BC, especially on saucepan pots.

Globular bowls formed the largest percentage of black burnished vessels, a considerable proportion of all decorated vessels and a predominantly decorated class of pottery in itself. This form may well have been used as table ware. The more elaborate decorative designs are found only on globular bowls. These designs are largely based on the zig-zag or chevron with rectilinear areas filled with blunt tooled strokes (e.g. nos. 41 and 42). They are common in Berkshire during the third to first centuries BC. No. 47 has close parallels in Surrey in the same period.

About a third of the saucepan pots were decorated, almost always with shallow tooled lines in one or twos beneath the rim (e.g. no. 31). This appears both early in the saucepan tradition and late, where it is said to foreshadow the sharply-beaded rims of Wessex

saucepans of the first century BC (Harding 1974, 194). This type of design has a widespread distribution in southern England, though most common in Berkshire and Hampshire in the third to first centuries BC. The shallow-tooled line and/or dot designs are found in different combinations over much of southern England, although the designs illustrated in nos. 46 and 52 appear to be local developments.

No close parallels could be found for no. 53, which seems to represent a fusion of decorative styles from two regions—the stroke-filled triangle common to the Oxfordshire and Berkshire area (see also no. 50) and the scroll seen on a pot from the Caburn II pottery in Sussex (Hawkes 1939, Fig. J, 70). The late date of this sherd is attested by the fact that it is from a globular bowl (Harding 1974, 198).

Jars formed approximately a fifth of the total number of decorated pots on the site. Barrel jars were a third of the total number of jars and while used largely for utilitarian purposes and never black-burnished, were nevertheless decorated to a limited extent, generally with finger- or nail-impressions.

Catalogue of pottery illustrated

Details of parallels are given in the full records deposited at the Hampshire County Museum Service. The major sources are Clay 1925, Collins 1953, Cunnington 1923, Curwen and Curwen 1927, Hawkes 1939, Leeds 1935, Liddell 1933–35, Richardson 1951, Wainwright 1970 and Wheeler and Wheeler 1932.

Fig. 15: phase IA

1. Shouldered jar with upstanding rim in buff-grey S1 fabric. Pit 92.
2. Shouldered bowl with curved profile in coarse buff-grey S3 fabric with heavy brush strokes, protruding pebbles and voids left by burnt-out grass, seeds etc. Pit 92.
3. Hunched rim of plain barrel jar in burnished orange S1 fabric. Pit 92.
4. Everted rim with 'pie crust' decoration along the top, in S6 fabric. Pit 100.
5. Sherd with large thumb impression in fabric S3. Pit 112.
6. Fluted rim of jar in buff S6 fabric with deep oval impressions around the top of the rim and thumb impressions below the rim. Pit 115.

7. Base sherd in orange S3 fabric, decorated with deep finger nail impressions around the bottom of the pot. Pit 115.

phase IBi

8. Body sherd in soapy dark brown-orange S5 fabric, the outer surface highly burnished and decorated with a very lightly tooled pattern with horizontal nail-incised lines below the design. Pit 126.
9. Small sherd decorated with two deeply incised parallel lines in S1 fabric. Pit 126.
10. Sherd with two converging rows of impressed circular holes in S1 fabric. Pit 126.
11. Small sherd decorated with a cordon in dark grey S1 fabric (usually such cordons are further ornamented). Pit 126.
12. Sherd in dark orange S2 fabric with grits visible on outer surface, decorated with a deeply incised line, form uncertain. See no. 9. Pit 122.
13. Barrel jar in fabric S3, some protruding grits in outer surface. Pit 122.
14. Jar in black unburnished S6 fabric. Pit 111.
15. Almost complete lipped barrel jar 135 mm high in S3 fabric, uniform orange and less friable than usual for this fabric; rough surface with some visible brush strokes; a slightly devolved form. Pit 196.
16. Rounded barrel jar in F1 fabric, with heavy burnishing strokes and visible white grits on the outer surface. Pit 65.
17. Jar with beaded rim in grey S3 fabric. Pit 156.
18. Jar in orange unburnished S1 fabric with voids from burnt-out organic tempering visible on the outer surface. Pit 214.

Fig. 16: phase IB (all from pit 83)

19. Large storage vessel in F1 fabric, black surfaces, visible white grits; partial burnishing on outer surfaces; beaded rim and high shoulder characteristic of early Roman forms.
20. Saucepan vessel in F1 fabric.
21. Plain barrel jar, fabric S3.
22. Lipped barrel jar in S3 fabric, unburnished and with a wide groove under the rim, probably made by a finger.
23. Small bowl in black burnished F1 fabric.
24. Lower half of barrel jar in S3 fabric, buff grey; inner surface extremely pitted with small circular holes and several large finger impressions; outer surfaces with visible brush strokes.
25. As no. 24, in buff fabric S5 with smoke-blackened patches on outer surface, also brush strokes and voids from burnt-out organic tempering.
26. Squat lipped barrel jar 100 mm high, in hard well-fired S3 red-brown fabric; heavy brush marks, probably made by a bunch of grass, on outer surface; some lighter brush strokes on inner surface, cf no. 15.

Fig. 17: phase IBii (all from Pit 81)

27. Large storage vessel in F2 fabric, unburnished surfaces.
28. Large storage vessel in orange and black S1 fabric.
29. Storage jar with incipient bead rim in F1 fabric with white grits on the surfaces.
30. Saucepan pot, slight internal swelling on rim; burnished F1 fabric.
31. Saucepan pot, black burnished S1 fabric with lightly tooled line under rim.
32. Saucepan pot similar to no. 31, in S1 fabric but here with two parallel tooled lines below the rim and visible diagonal burnishing strokes.
33. Plain-rimmed pot with slanting walls in orange-brown S1 fabric with vertical burnishing.
34. Sherd of S1 fabric with two parallel incised lines; precise form of pot uncertain, though incised decoration applied before firing.
35. Small sherd in light grey S1 fabric decorated with an incised line and rows of punched circular holes, some filled with a white inlay.
36. Dark grey sherd of furrowed bowl in S2 fabric.
37. Small saucepan rim sherd in S5 fabric.
38. Small globular jar in hard burnished orange-black S1 fabric, with incipient bead rim.
39. Small barrel jar in well-fired S3 fabric with visible wipe marks on the outer surface.
40. Small bowl in black-burnished F1 fabric.
- 41a, b, c. Everted neck and body sherds of wide-shouldered pot in hard pink-buff S9 fabric, unburnished, decorated with very lightly tooled design on the shoulder.

Fig. 18: phase IB

42. Rim of globular bowl in orange/dark grey S2 fabric decorated with a zig-zag design composed of blunt-tooled lines between two lightly tooled horizontal lines. Pit 150.
43. Globular bowl in black burnished F1 fabric with oblique tooled lines between two rows of punched dots. Pit 150.
44. Globular bowl with similar black burnished F1 fabric and decoration to no. 43 above. Pit 150.
45. Possible barrel jar body sherd in sand-coloured S5 fabric decorated with finger-nail incised horizontal lines of irregular spacing. Pit 150.
46. Sherd of dark grey S2 fabric decorated with roughly circular impressions above a horizontal blunt tooled line, probably from a globular bowl. Pit 150.
47. Globular bowl in black burnished S1 ware in a similar form to no. 42 above; decoration also similar though the method of execution differs, no. 47 having greater regularity and depth—possibly from some form of comb. Pit 97.

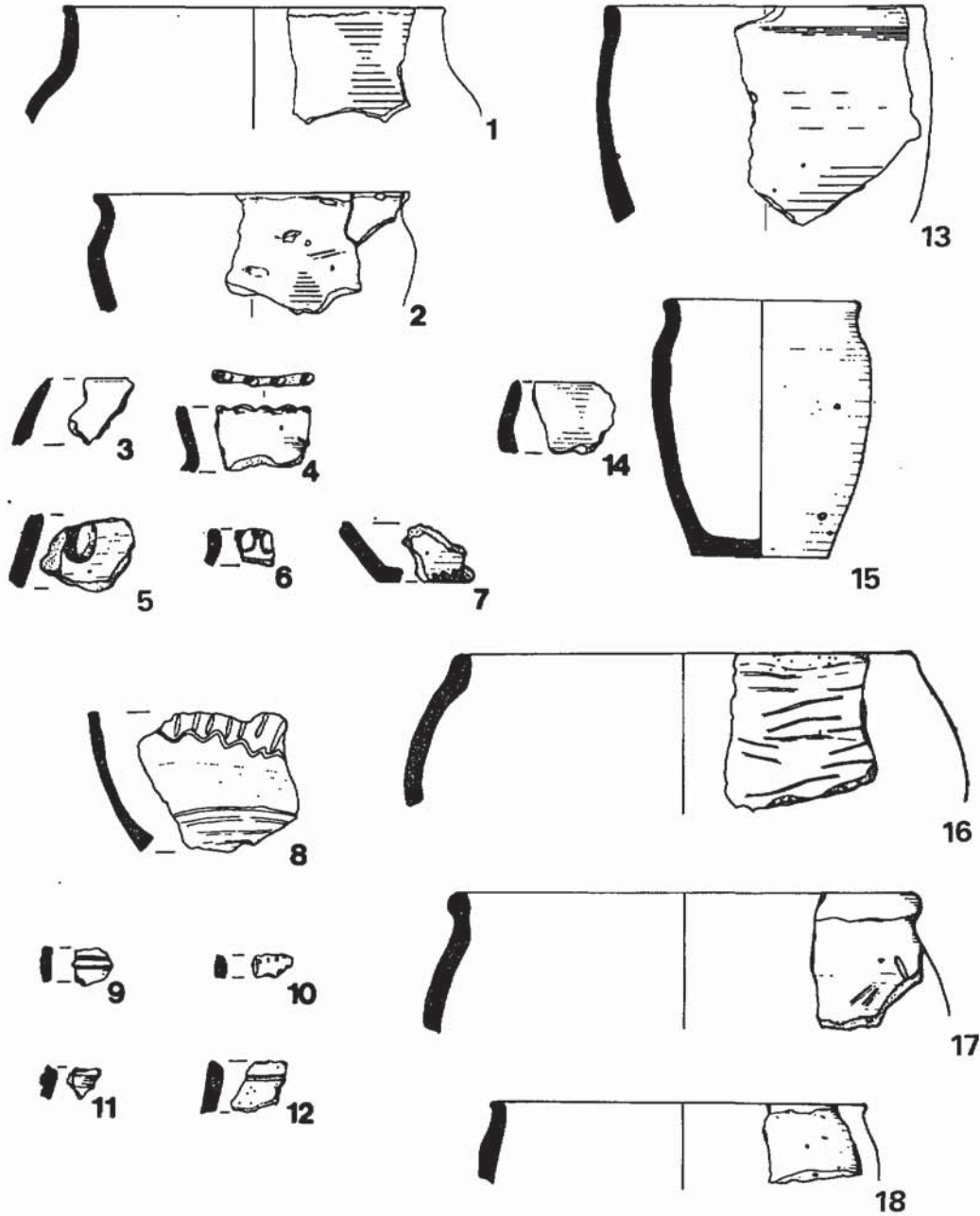


Fig. 15. Ructstalls Hill: Iron Age pottery, phases IA and IBi. Scale $\frac{1}{4}$.

48. Globular jar in buff-grey burnished F1 fabric with visible brush strokes on outer surface. Cf no. 26. Pit 97.
 49. Globular bowl in black burnished F1 fabric

- with furrowing or grooving on the neck. Pit 97.
 50. Globular bowl in black burnished S6 fabric decorated with a row of pecked triangular

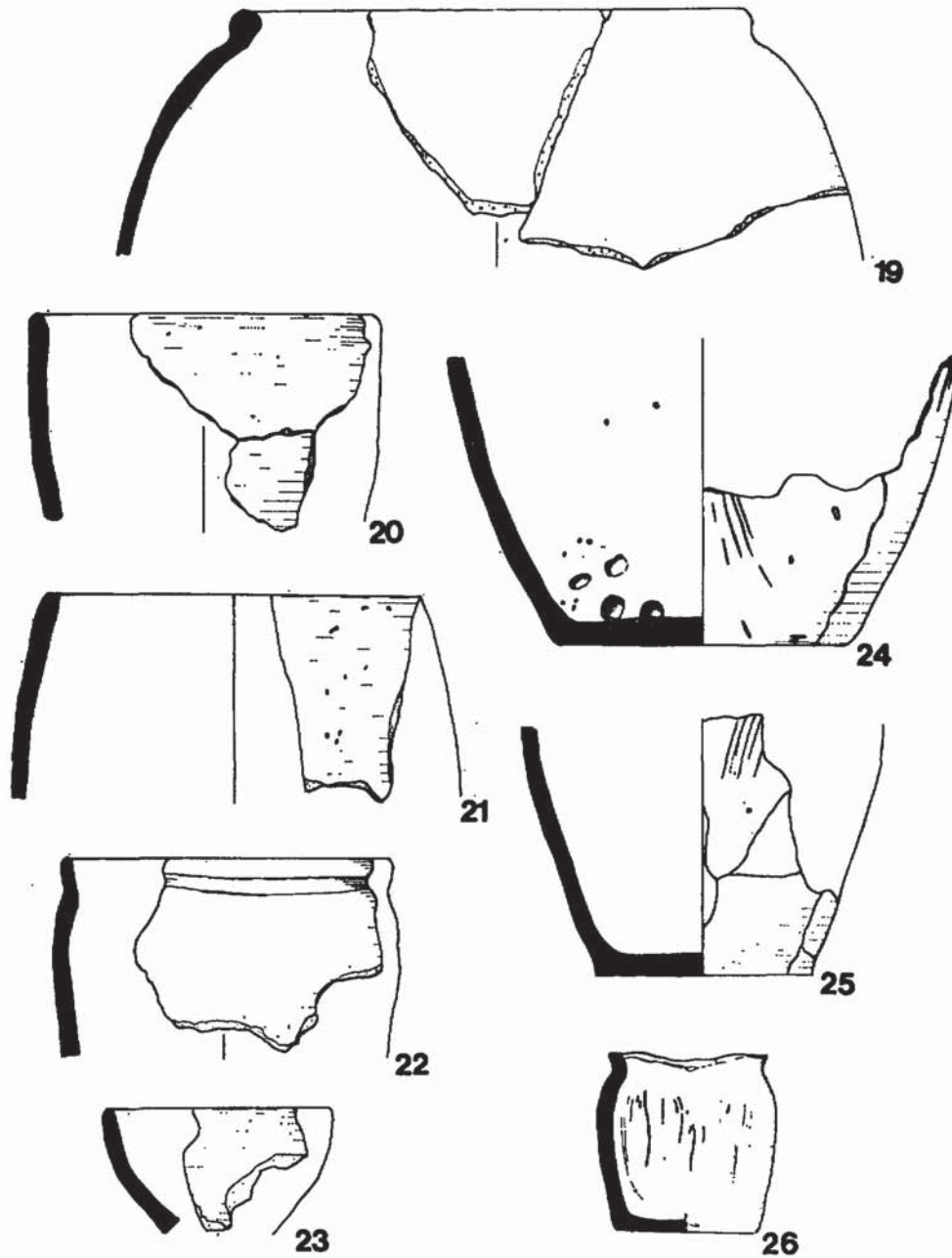


Fig. 16. Ructstalls Hill: Iron Age pottery from pit 83, phase IB. Scale $\frac{1}{4}$.

stabbed holes directly beneath the rim and a hatched chevron design in blunt tooling below this. Pit 125.

51. Saucepan in black burnished F1 ware with two lightly tooled lines under rim. Pit 125.
52. Similar vessel to no. 51, decorated with slant-

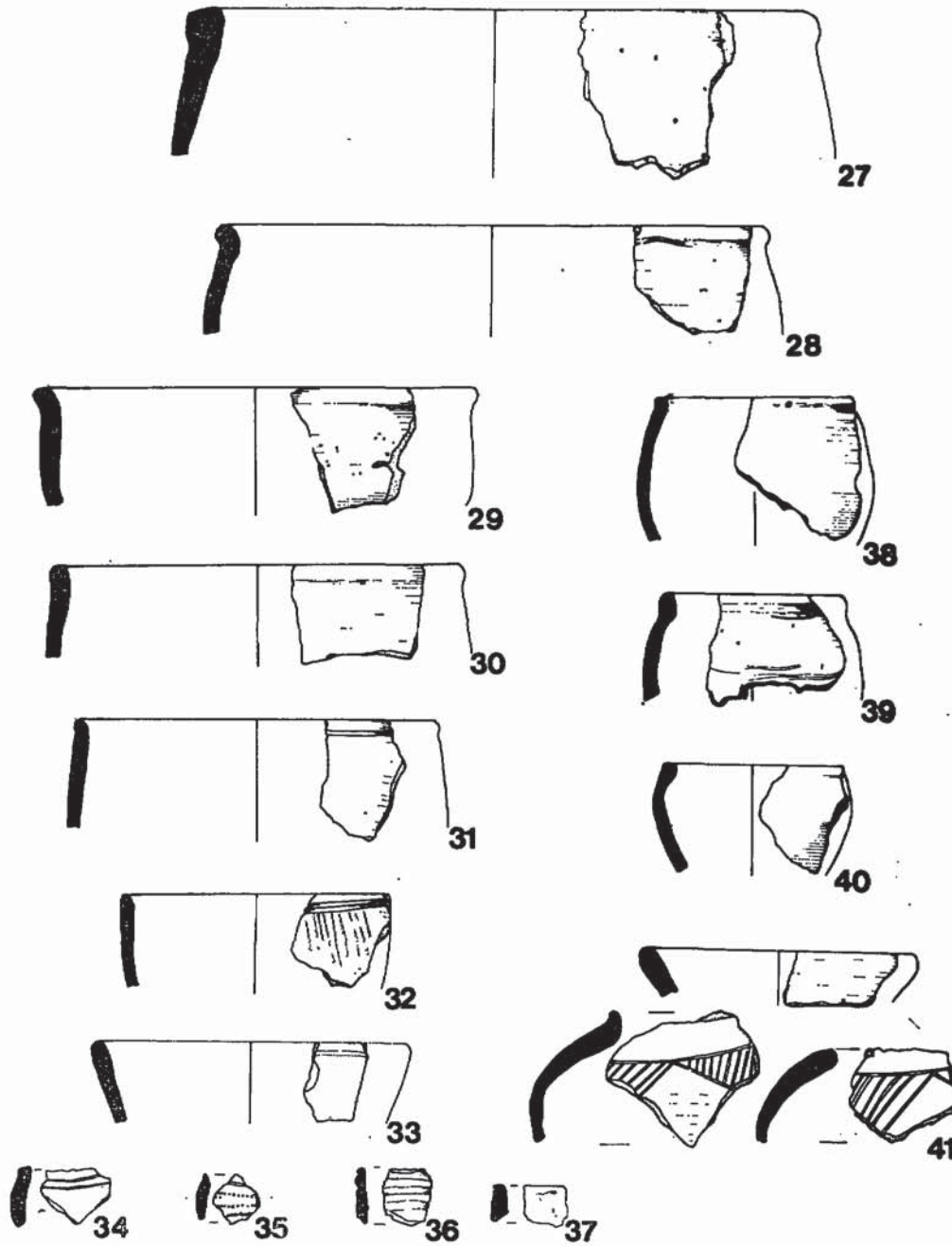


Fig. 17. Ructstalls Hill: Iron Age pottery from pit 81, phase IBii. Scale $\frac{1}{4}$.

ing rows of circular impressions. Pit 125.
 53. Globular bowl in black burnished S1 fabric; zig-zag/chevron design with a curvilinear

scroll below. Pit 125.
 54. Sherd in dark brown-grey S2 fabric with two deep finger-nail impressions. Pit 125.

55. Slanting rim with two tooled parallel lines below it, in orange-black S2 fabric. See no. 33. Pit 60.
56. Rounded jar in black burnished S6 fabric with two lightly tooled parallel lines under the rim and two bored holes, one beneath the rim and the other visible in the fracture directly below it. Pit 155.
- 57a, b. Two joining sherds in orange and dark grey S1 fabric decorated with deeply stabbed holes, filled with a white substance. Pit 119.
58. One small sherd in dark grey S1 fabric decorated with punched circular dots above a tooled line. Pit 119.

Conclusions

The Iron Age pottery from Ructstalls Hill appears in many ways to occupy an intermediate position in the cultural groupings of southern central Britain.

The early forms (e.g. no. 1) and types of decoration (e.g. no. 4), dating by analogy to the period before the third century BC, have their closest parallels from sites in Wiltshire and Hampshire. These early pots are mostly made of sandy fabrics, particularly the coarse S3 ware which was the predominant type of fabric at the site. Again, parallels for this fabric come mostly from Wiltshire.

However, there are relatively few uncontaminated early features. Ditch 72 and pits 112 and 115 belong to this category. Since ditches 8 and 75 form part of the same ditch system as 72 (phase IA) they must be early too, though both features are contaminated by sherds of later character. The same may be said of pits 100 and 92. The latter contained pottery of a markedly early nature with a possible date in the fourth century BC (see nos. 1, 2 and 3). Again, most of these features contained high percentages of sandy wares.

A number of features at Ructstalls Hill contained neither characteristically 'early' nor 'late' types of pot. Instead they contained barrel jars, slack or round-bodied, in predominantly sandy fabrics. Decoration found on such vessels generally tends to place them in an 'early' chronological position (e.g. no. 7) but their presence in pits containing later types confirms their use over a prolonged period.

Pots belonging to this later phase (e.g. nos. 15 and 43) show strong affinities with assemblages to the north of the site in Berkshire and Oxfordshire, rather than to the south as in the earlier types. There is a marked increase in the use of flinty wares in these forms, a high burnish is frequently applied, and decoration increases. Two relatively local geological sources may have provided the bulk of the wares found at Ructstalls Hill: one on the Chalk, the other on the sand.

Two types of shell-tempered pottery were present in pit 76 and pit 158. Similar fabrics have been found at a number of sites in southern England, mostly in Wiltshire and Hampshire where they are of pre-third century date, for example Meon Hill, Hants (Liddell 1935) and Swallowcliffe Down, Wilts (Clay 1925). However, the shell-tempered sherds at Ructstalls Hill came from features whose pottery showed 'late' characteristics.

The small amount of briquetage found at Ructstalls Hill, suggests links with the main areas of salt production. Briquetage has also been found at the Iron Age hillfort at Winklebury, Basingstoke (Smith 1977, 88), which may have been the local distribution point.

ROMANO-BRITISH POTTERY by Rosemary Stephenson

Introduction

In general the pottery appears to be that of a poor settlement, with practical forms such as storage jars and cooking pots predominating over ornamented forms. The site produced no significant imports and parallels were mostly found in neighbouring sites in Berkshire and Hampshire. It is difficult to come to any definite conclusions about the sources of the pottery without petrological analysis.

The pottery has been grouped by fabric and the weight of each group in each layer of a feature recorded in grams. There were several problems in deciding on fabric grouping: the sandy fabrics were often very

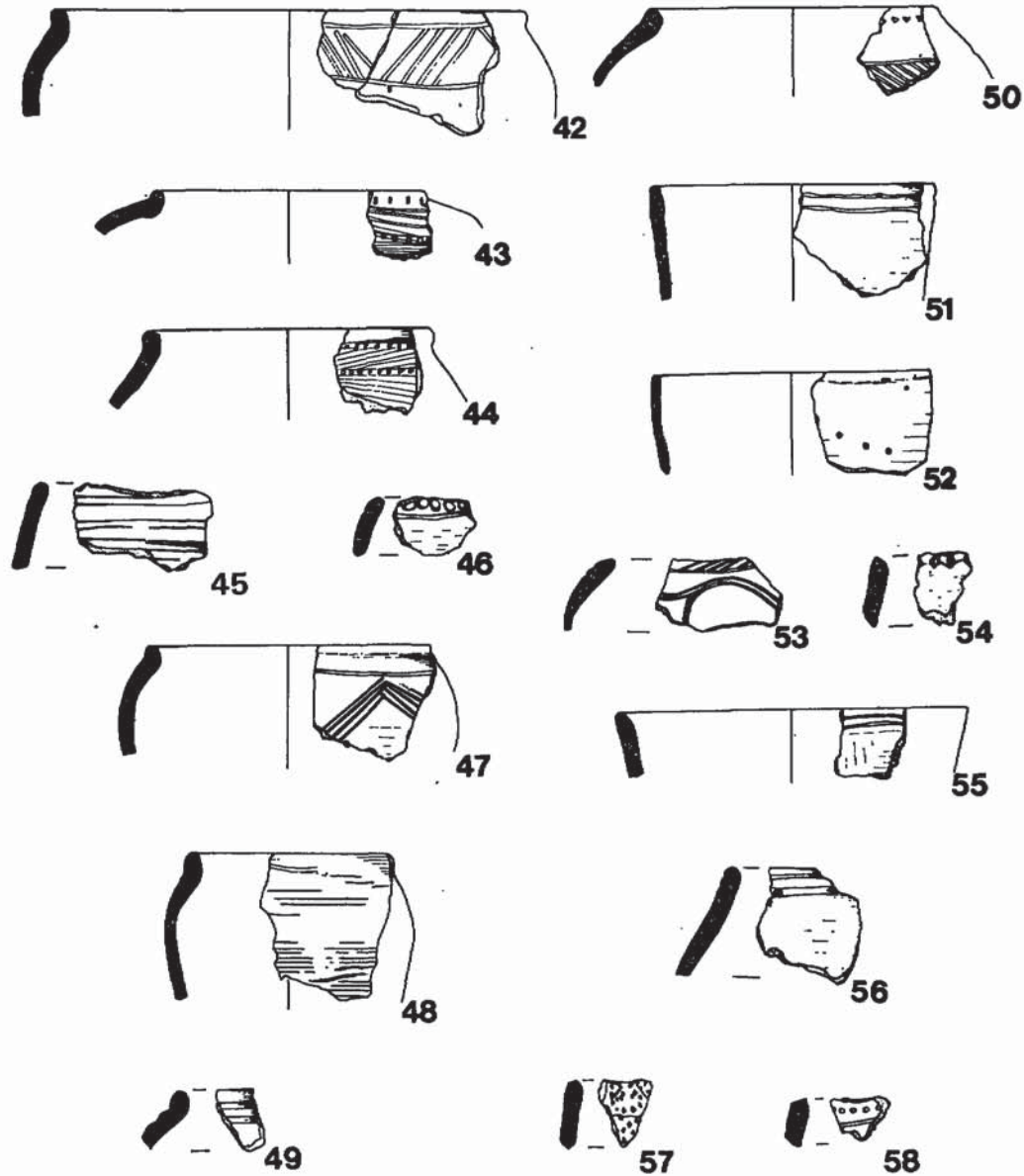


Fig. 18. Ructstalls Hill: Iron Age pottery from pits 60, 97, 119, 125, 150 and 155 (phase IB). Scale $\frac{1}{4}$.

similar and some fabrics seemed to be a combination of several groups. Sandy wares, buff, grey and black in colour, range from early to later Roman and those from Ructstalls Hill

were sometimes difficult to parallel exactly as many rim sherds were small and there were few complete pots.

The number of fabric groups was kept as

small as possible in order to avoid confusion. Of the seven main groups, the greatest quantity of material came from groups *A*, *B* and *D*.

Fabric types

A. Black sandy wares with no other inclusions than varying amounts of sand. The insides of sherds in this group may be any colour from buff to black but the outside is always black. Surface sometimes burnished. Illustrated sherds: 63-4, 70, 72, 76-7, 79, 81, 90-91, 94, 101, 104, 106, 108-111, 115-118, 120-121, 123, 125.

B. Grey or buff sandy wares with varying amounts of sand inclusion. Both the centre and the surface of these sherds are varying shades of grey or buff, grey being predominant. Usually no burnishing. Probably many of the pots in this fabric came from Alice Holt kilns. Illustrated sherds: 61, 69, 73, 78, 80, 83-4, 87-8, 92, 95, 97-100, 119.

C. Fine wares varying from buff to orange. This category formed a very small quantity of the total amount of pottery. It included fragments of butt beaker and butt beaker type and imitation Gallo-Belgic platters—some of the traditional early Roman fine wares. Illustrated sherds: 59, 62, 75, 96, 102, 122.

Samian ware is also included in this category but not illustrated. Only ten fragments of samian ware were found, one being re-used as a spindle whorl (Fig. 28 no. 37). Pit 97 contained three pieces of second-century Lezoux ware, of fine buff fabric with black glaze. Fragments of carinated vessels came from pit 213 and ditch 173. The only decorated sherd was from pit 220: probably Dragendorf 37 form, showing a running hound, part of the hound chasing hare motif which is a feature of Flavian samian.

D. Coarse ware with large flint inclusions, sometimes covered with buff slip. This type can be likened to the 'Silchester ware' which May calls 'British Grittled Ware' (May 1916). This is ware of exclusively British manufacture and the beginning of its production long preceded Roman occupation. Much of this

was probably made by hand and baked in open fires. However, pots in this fabric at Ructstalls Hill are distinguished from earlier gritted wares by the rim forms, finished on a slow wheel. The colour of the fabric varies, mainly because of firing temperatures which tended to be higher than in Iron Age potting. Illustrated sherds: 66-8, 71, 74, 85-6, 89, 93, 103, 112-114. Some of the fabrics included in this section had smaller flint inclusions and some grit but otherwise they were similar to the instantly recognisable 'Silchester ware'. A possible reason for this is the availability of material for inclusion in the clay.

E. Profuse fine ground flint inclusions in a sandy (usually black) fabric. The size of the inclusions in this was never more than ca 3 mm across. Illustrated sherds: 65, 82, 107.

G. Grey and black soapy textured wares with frequent grog inclusions. Illustrated sherd: 105.

H. Very sparse flint and/or grit inclusions of ill-assorted size in sandy fabric. Illustrated sherd: 92. The total quantity of this fabric found is not great and the indications are that this could be considered as a sub-group of *B*.

Very occasionally fabrics occurred that did not readily fit into the above categories. These are described separately in the Feature Summary (in the records deposited at the Hampshire County Museum Service). The only illustrated sherd not assigned to the above categories was no. 60. Most features had a small amount of residual Iron Age material but this included no rims or decorated sherds.

Catalogue of pottery illustrated

Details of parallels are given in the full records deposited at the Hampshire County Museum Service. The major sources for these are Boon 1969, Clifford 1961, Cotton 1947, Cunliffe 1971, 1975, Frere 1964 and Wheeler and Wheeler 1936.

Fig. 19: Period II

59. Butt beaker sherd in fabric C, with smooth surface, decorated. Pit 220/252, layer 1.
60. Cremation urn in red sandy fabric with grey core, black burnished surface. Pit 248, layer 2.

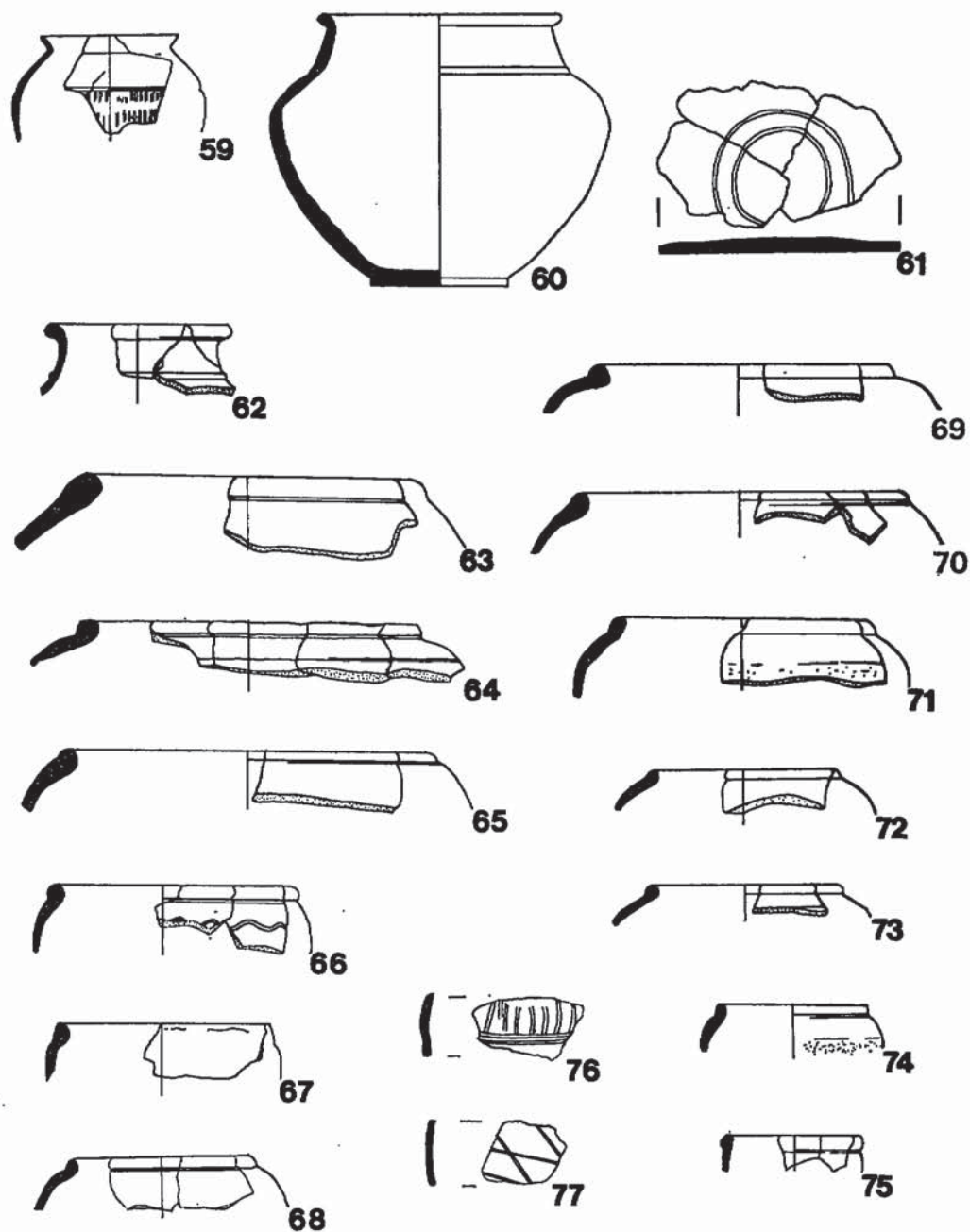


Fig. 19. Ructstalls Hill: Early Roman pottery, Period II, 59-60; phase IIA, 61; phase IIB, 62-77. Scale $\frac{1}{4}$.

phase IIA

61. Imitation Gallo-Belgic platter in fabric B. Pit 108, layer 1.

phase IIB

62. Sherd in fabric C with burnished surface. Ditch 11, layer 2.
 63. Sherd in fabric A. Ditch 70, layer 1.
 64. Sherd in fabric A with black burnished surface. Ditch 11, layer 2. Similar forms from ditch 1, layer 3; feature 2, layer 3; ditch 5, layer 3; feature 145, layer 3.
 65. Sherd in fabric E. Ditch 11, layer 2. Similar forms from pit 74, layer 1; pit 97, layer 1.
 66. Sherd in fabric D. Ditch 11, layers 2 and 3.
 67. Sherd in fabric D, hand-made with folded over rim. Ditch 70, layer 1.
 68. Sherd in fabric D, burnished surface. Ditch 11, layer 2. Similar form from ditch 68, layer 2, but in buff sandy fabric with no inclusions.
 69. Sherd in fabric B with burnished surface. Ditch 70, layer 1. Similar forms from ditch 5, layer 3 and ditch 2, layer 3, but without burnished surface.
 70. Sherd in fabric A. Ditch 11, layer 2.
 71. Sherd in fabric D, surface burnished on shoulder. Ditch 11, layer 2. Similar forms from ditch 1, layer 3; ditch 5, layer 3 and ditch 11, layer 3.
 72. Sherd in fabric A with burnished black surface. Ditch 11, layer 2.
 73. Sherd in fabric B. Ditch 70, layer 2.
 74. Sherd in fabric D, surface burnished on shoulder. Ditch 11, layer 2.
 75. Sherd in fabric C. Ditch 61, layer 1.
 76. Decorated sherd with incised grooves, in fabric A. Ditch 11, layer 2.
 77. Decorated sherd with incised lines, in fabric A. Ditch 68, layer 2.

Fig. 20: phase IIB

78. Sherd decorated with concentric grooves, in fabric B. Ditch 11, layer 2.
 79. Sherd in fabric A with burnished surface. Ditch 70, layer 1. Similar forms from ditch 1, layer 3 (without raised cordon) and ditch 5, layer 3.
 80. Sherd in fabric B. Ditch 70, layer 1.
 81. Base sherd of jar in fabric A with surface originally burnished. Ditch 11, layer 2.
 82. Base sherd of jar in fabric E. Ditch 11, layer 2.
 83. Sherd in fabric B with burnished surface. Ditch 11, layer 3.
 84. Sherd in fabric B with burnished surface. Ditch 11, layer 2.
 85. Sherd in fabric D with burnished surface. Ditch 11, layer 2. Similar forms from ditch 1, layer 3 and ditch 2, layer 3.
 86. Sherd in fabric D, outer surface burnished. Ditch 70, layer 1.

87. Sherd in fabric B with burnished surface. Ditch 70, layer 2.
 88. Sherd in fabric B, smooth surface. Ditch 11, layer 2.
 89. Sherd in fabric D. Ditch 70, layer 1. Similar forms from ditch 1, layer 3; ditch 5, layer 3.
 90. Sherd decorated with parallel grooves about 1 mm apart, in fabric A. Ditch 68, layer 2.
 91. Decorated sherd in fabric A. Ditch 11, layer 2.

phase IIC

92. Decorated sherd in fabric H with burnished surface. Feature 143, layer 1.
 93. Sherd in fabric D. Feature 143, layer 1.

Fig. 21: phase IIC

94. Sherd in fabric B. Pit 220, layer 2.
 95. Sherd in fabric B. Ditch 11, layer 2. Similar form from ditch 1, layer 3.
 96. Sherd in fabric C with surface smooth and burnished. Ditch 5, layer 3.
 97. Sherd in fabric B. Ditch 1, layer 3. Similar forms from ditch 1, layer 2.
 98. Sherd in fabric B. Ditch 1, layer 3. Similar form from ditch 62, layer 2.
 99. Sherd in fabric B. Ditch 1, layer 3. Similar forms from ditch 62, layer 2 and pit 97, layer 1, but in fabric A.
 100. Sherd in fabric B. Ditch 1, layer 3.
 101. Sherd in fabric A with burnished surface. Ditch 5, layer 3.
 102. Sherd in fabric C. Ditch 5, layer 2.
 103. Handle of cup in fabric D. Ditch 2, layer 3.
 104. Sherd in fabric A. Ditch 1, layer 3.
 105. Sherd in fabric G. Alice Holt or Staines kilns. Ditch 2, layer 3.
 106. Sherd in fabric A with burnished surface. Ditch 1, layer 4.
 107. Sherd in fabric E with burnished surface. Ditch 1, layer 3.
 108. Sherd in fabric A with outer surface burnished just under the rim. Ditch 22, layer 1. Similar form from ditch 1, layer 2.
 109. Sherd in fabric A with burnished surface. Ditch 1, layer 3. Similar form from pit 106, layer 1A.
 110. Sherd in fabric A with burnished surface. Ditch 1, layer 3. Similar form from ditch 2, layer 3.
 111. Sherd decorated with cross hatching under shoulder groove, in fabric A with burnished surface. Ditch 1, layer 3. Similar form from ditch 2, layer 3.

Fig. 22: phase IIC

112. Sherd in fabric D. Ditch 1, layer 3. Similar form from ditch 5, layer 3.
 113. Sherd of large storage jar in fabric D. Ditch 1, layer 3. Similar forms from feature 2, layer 3.
 114. Base of large jar in fabric D. Ditch 1, layer 3.

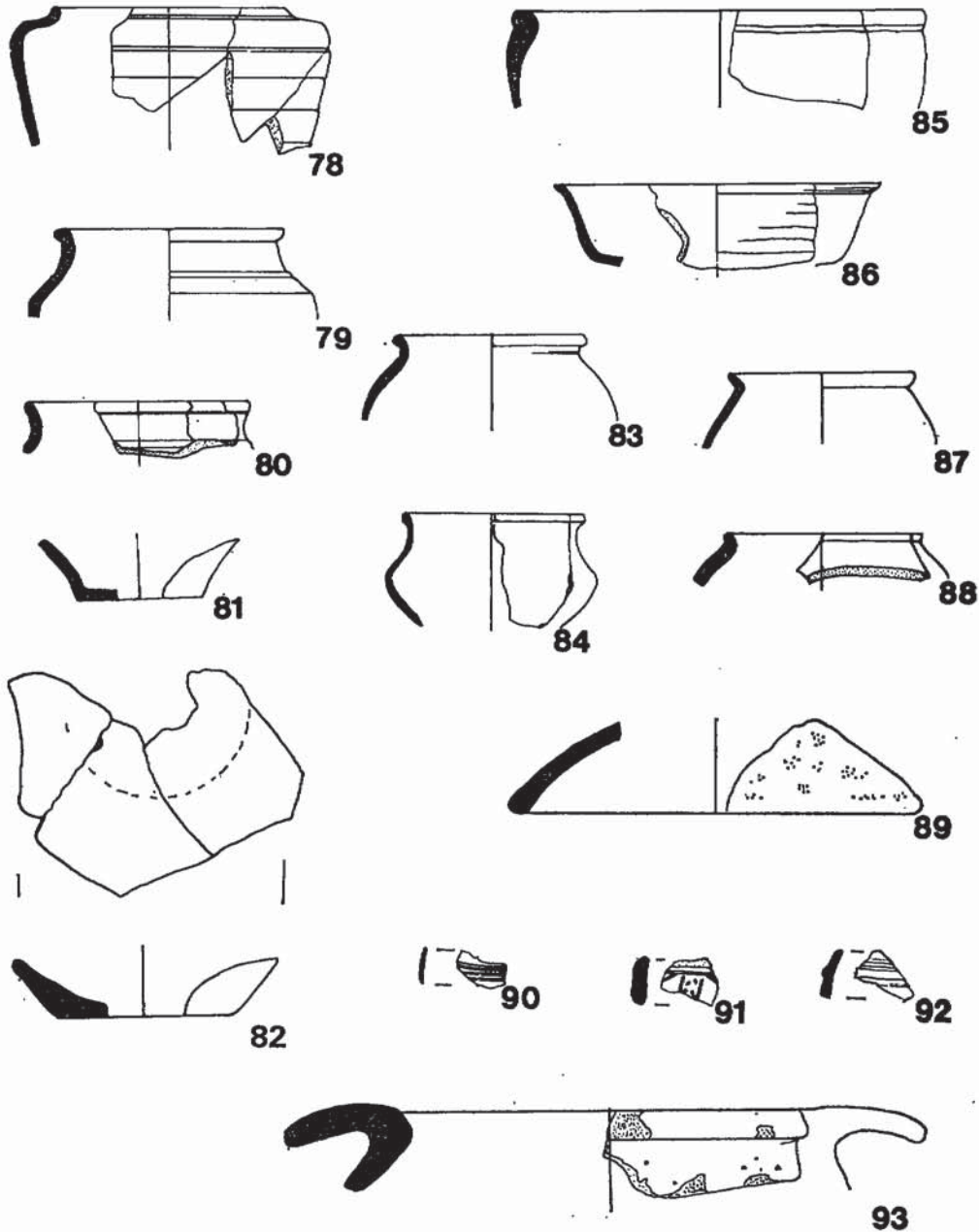


Fig. 20. Ructstalls Hill: Early Roman pottery, phase IIB, 78-91; phase IIC, 92-3.
Scale $\frac{1}{4}$.

115. Sherd in fabric A. Pit 40, layer 2.
 116. Base of bowl in fabric A. Ditch 5, layer 3. Similar form from pit 40, layer 2, but in fabric B.

Period III

117. Sherd in fabric A. Pit 148, layer 1.
 118. Sherd in fabric C with inner surface of rim painted black. Ditch 64, layer 2. Similar forms from pit 108, layer 1 and from ditch 62, layer 2; pit 97, layer 1 and pit 203, layer 5 but in fabric B.
 119. Sherd in fabric B with smooth surface. Ditch 64, layer 2. Similar form from pit 97, layer 1.
 120. Sherd in fabric A with black painted surface. Ditch 227, layer 1.
 121. Base of small jar in fabric A with traces of black paint on surface. Ditch 227, layer 1.
 122. Sherd in fabric C. Ditch 60, layer 2.
 123. Sherd decorated with incised lines, in fabric A. Pit 197, layer 1. Similar form from pit 106, layer 1A but in fabric B.
 124. Sherd with decoration painted in grey on fabric B. Pit 97, layer 1.
 125. Sherd in fabric A, inner surface painted. Ditch 64, layer 2. Similar forms from feature 40, layer 2 (but smaller), pit 97, layer 1 and pit 106, layer 1A.

The percentages of different fabrics found in the ditches of different phases are tabulated below. Phase IIA, F.69, 71; phase IIB, F.11, 61, 68, 70, 198, 239; phase IIC, F.1, 131, 222; Period III, F.64, 130, 227.

TABLE 2. Percentages of Romano-British pot fabrics.

Period / Phase	Fabric						
	A	B	C	D	E	G	H
IIA	15.0	—	—	60.0	20.0	—	5.0
IIB	19.8	23.2	1.8	37.8	7.0	1.6	8.0
IIC	17.2	13.0	0.5	58.0	4.2	6.8	0.5
III	29.7	56.6	5.9	1.3	1.6	1.3	3.6

Conclusions

The phase IIA ditch was a slighter feature than the phase IIB and C ditches and yielded much less pottery. A greater amount of fabric D is usually present in earlier features. There is a possible parallel with the group dated AD 40–60 at Silchester (Boon 1969). The small amount of wares with grog inclusions makes an equation with earlier groups at Silchester unlikely. The paucity of finds from this ditch indicates that it was fairly rapidly replaced by the phase IIB ditch.

The phase IIB ditch is stratigraphically later than the phase IIA ditch, although on typological grounds a similar date range is indicated, about AD 45–70. However, A and B together—the sandy, wheel-thrown fabrics—now account for over 40% of the fabrics, while the flint-tempered D ware is reduced to 37% of the assemblage. On the basis of the change in fabrics, a date in the third quarter of the first century AD might be suggested for the phase IIB ditch system.

Typological parallels suggest a date range of AD 70–120 for the phase IIC ditch. At Silchester, flint-tempered fabrics appear to be residual in second century groups (Fulford, pers. comm.). At Ructstalls Hill they account for nearly 60% of the pottery in the phase IIC ditch, which may indicate a date nearer AD 100 than 120. The Period III ditch system is notable for its almost complete lack of fabric D. Fabrics and typological parallels suggest a date within the later third and early fourth centuries AD.

The Alice Holt kilns were in operation from about AD 55 and are probably the source of much of the grey ware (fabric B), both in the first century occupation of Period II and in the fourth century occupation of Period III. Pottery from the Period II occupation may also have been derived from the Staines kilns. BBi fabric (black burnished ware) was found in Period III in ditch 62 and feature 106 and a fourth-century colour-coated flanged bowl in pit 203. Malcolm Lynes has pointed out to me that the range of Alice Holt forms for phases IIA, B and C is limited, and this confirms a fairly short time scale for these phases from about AD 50 to 100.

THE COINS by Duncan Russell

1. AE 3/4 Commemorative, period II AD 330–335. *Obverse*: Helmeted bust of Constantinopolis left, wearing imperial mantle and holding a sceptre. *Legend*: (CONST)ANTINOPOLIS (Hill et al. 1972, 1, no. 26a). *Reverse*: Victory standing left, right foot on prow, holding sceptre (?) and leaning on a shield; in the exergue TRP*; First officina Treveri, second issue (Hill et al. 1972, 1, no. 59). Surface find, pit 104, Period III.

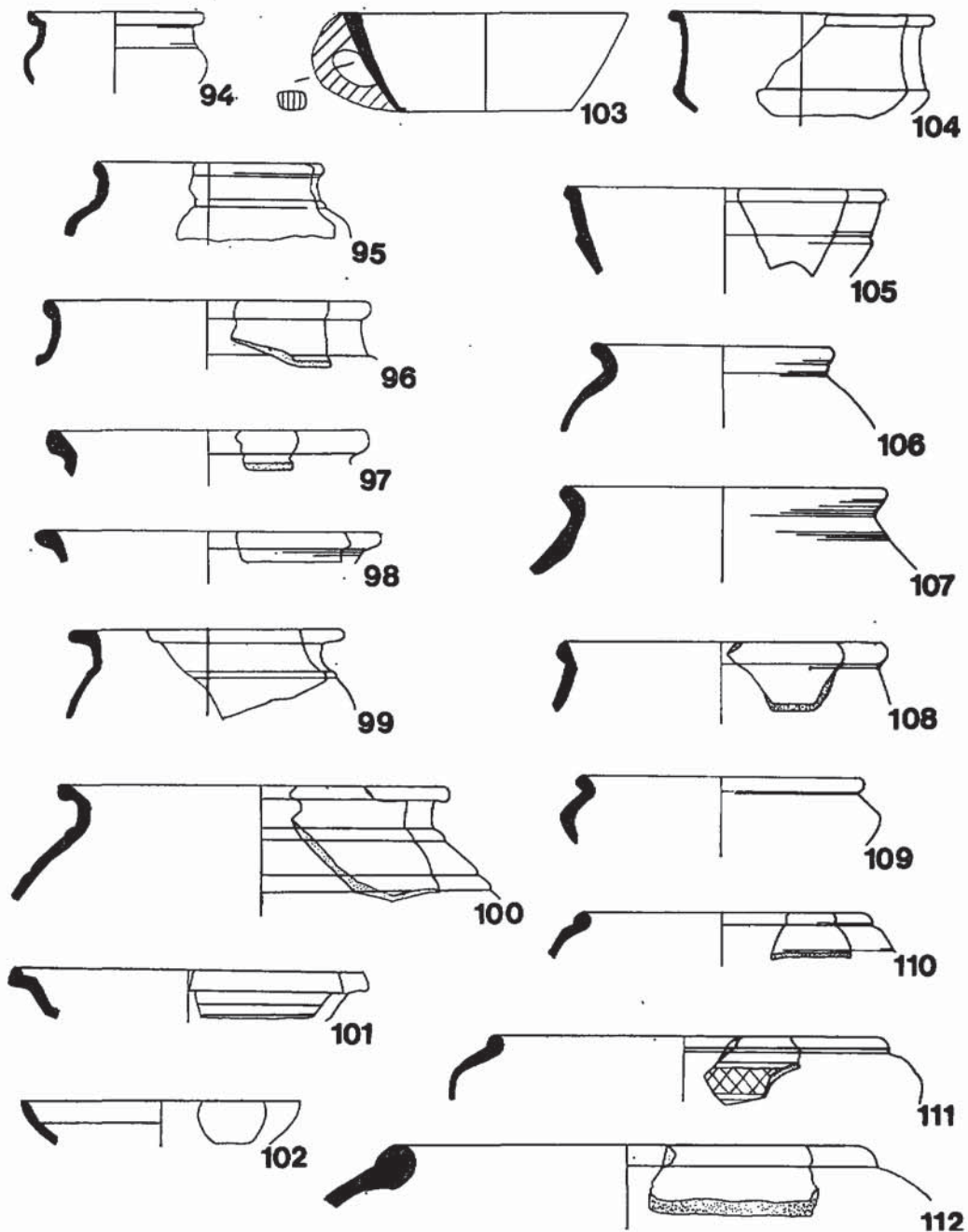


Fig. 21. Ructstalls Hill: Early Roman pottery, phase IIC. Scale $\frac{1}{4}$.

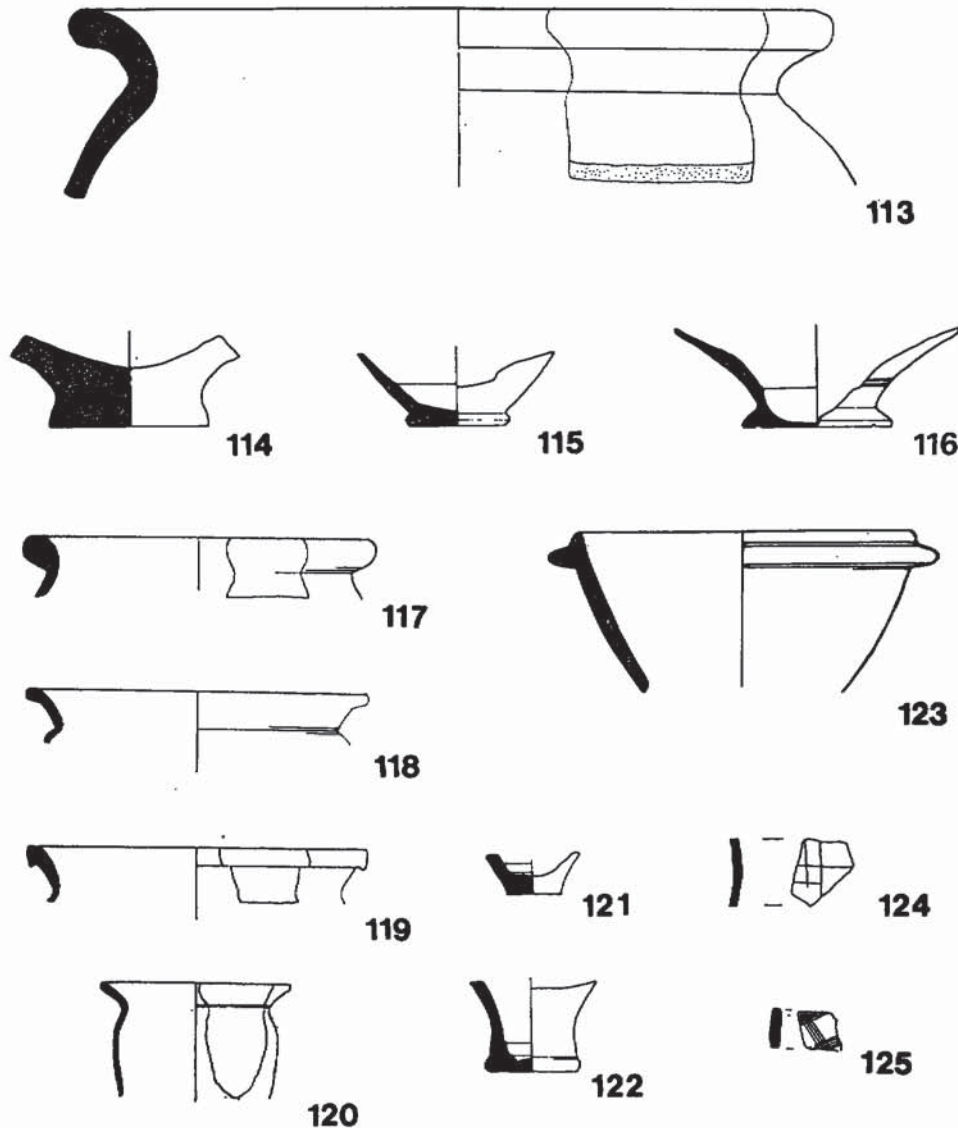


Fig. 22. Ructstalls Hill: Early Roman pottery, phase IIC, 112-116. Late Roman pottery, Period III, 117-125. Scale $\frac{1}{4}$.

2. AE $\frac{3}{4}$ Commemorative, period II AD 330-335. *Obverse*: Helmeted bust of Roma left, wearing imperial mantle. *Legend*: VRBS. (ROMA). *Reverse*: Wolf left, suckling Romulus and Remus, two stars above. M/mark off flan. No legend. Possibly Treveri. Surface find in E5.
3. AE $\frac{3}{4}$ Commemorative, period II AD 330-335. *Obverse*: Helmeted bust of Roma left.

Legend: VRBS. (RO)MA. *Reverse*: totally obliterated by scratches. It seems that at some period in its existence this coin was used as a gaming counter. Ditch 64.2, Period III.

4. AE Antoninianus of Allectus, AD 293-296. *Obverse*: Radiate, draped and cuirassed bust right. *Legends*: IMP.C.ALLECTVS.P.F.AVG. *Reverse*: Providentia standing left, holding baton and cornucopia, at her feet a globe. *Legend*:

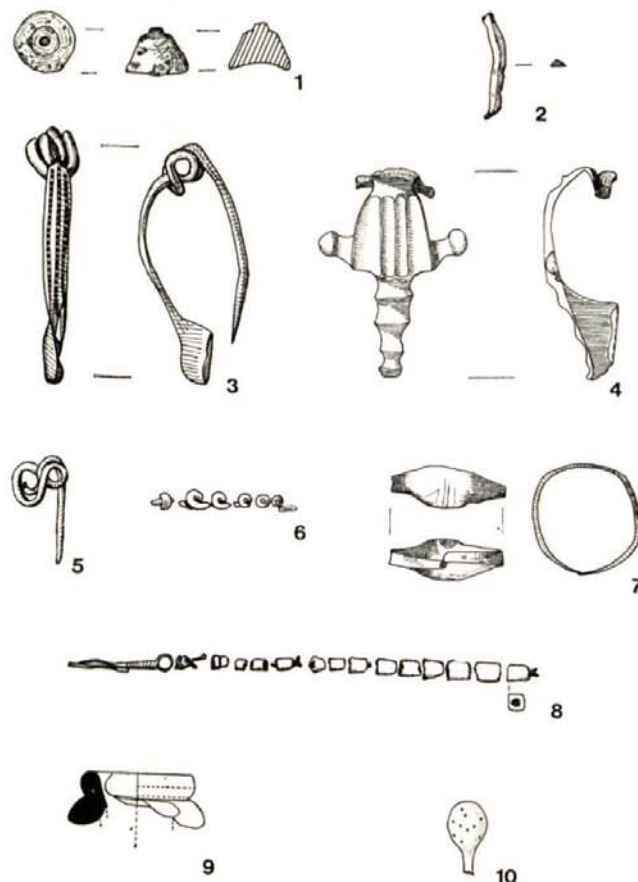


Fig. 23. Ructstalls Hill: Objects of bronze (1-7) and glass (8-10). Scale $\frac{2}{3}$.

PROVID.AVG. S.P. in field, mint mark c in exergue. Camulodunum or Clausentum (Mattingley and Sydenham 1972, No. 97). Surface find, E1.

5. AE 3 of Constantine II as Caesar, AD 317-337. Silver wash present on much of the coin. *Obverse*: Radiate, draped and cuirassed bust left. *Legend*: FL.CL.CONSTANTINVS.IVN.N.C. *Reverse*: Two Victories placing a shield, inscribed VOT.P.R., on an altar (Vota Populi Romani). *Legend*: VICTORIAE.LAETAE.PRINC. PERP. (Victoriae Laetae Principum Perpetuae). Mint-mark PLN=Pecunia Londinium Askev 1951, 873; Cohen 1880-92, 224.

(Maurice 1900). London mint's output is divided into seven periods. The above example he ascribes to period VI, AD 320-324. The condition of this coin is virtually as struck and it must, therefore, have been deposited within months of manufacture; which gives a 'terminus post quem'

of AD 326 at the latest—or, if Maurice's theory is correct, AD 324—for layer 2 of feature 213.

BRONZE OBJECTS (Fig. 23)

1. Small, solid, bell-shaped object. Pit 193.3, Period I, probably phase IB.
2. Fragment of bronze strip, triangular section. Pit 228.4. Period I quarry area.
- Small round bronze object, 5 mm diameter. Pit 97.5, Period I.
3. Brooch: complete example of Nauheim derivative type, with solid catchplate and three rows of punched decoration on the bow. Cf Fishbourne (Cunliffe 1971, pl. 36, no. 12) dated AD 43-75. Ditch 1.2, phase IIC.
4. Bow of brooch: Hod Hill type, with traces of silver wash. Pit 238.1, Period II.
5. Part of pin, probably part of Nauheim derivative type brooch. Pit 104.1 (unexcavated).

6. Piece of twisted bronze wire. Pit 150.1, phase IB pit, with Period II material from layer 1.
7. Ring, plain, from its size probably man's ring. Ditch 64.2, Period III.
- Small fragment of bronze plate, 7 × 6 mm. Pit 203.1, Period III.

GLASS (Fig. 23)

8. Part of necklace of 13 blue glass beads, square section, with bronze wire hook. Cf Fishbourne (Cunliffe 1971, fig. 69, 3). Pit 97.1, phase IB pit with Period III filling in layers 1-4.
9. Part of rim of small flask in green glass. Pit 74.1, phase IB pit with Period II in top.
10. Knob of glass rod, green glass. Ditch 62.2, Period III.
- Fragment of thick blue/green glass. Post hole 89.

IRON (Figs. 24, 25)

11. Fragments of blade, bent over double. Dark stain when found, giving overall length of 130 mm, possibly indicated position of ? wooden handle. Pit 81.3, phase IB.
- Other fragments of iron from Period I: nail; post hole 9, piece of irregular iron plate, 30 × 24 mm, pit 65.2; fragment of iron plate 30 × 30 mm, pit 81; fragment of iron bar, very corroded, 70 × 15 mm, pit 92.4; large corroded tapering bar, 60 mm long × 30 × 30 mm to 15 × 10 mm, pit 97.5; fragment of iron plate ? blade, 25 × 12 mm, pit 125.3.
12. Fragments of iron brooch. Cf Bagendon (Clifford 1961, fig. 29). Ditch 5.1, phase IIC.
13. Clamp or timber 'dog' for joining timber posts. Cf Hod Hill, (Richmond 1968, fig. 32). Ditch 1.3, phase IIC.
14. Smaller clamp or timber 'dog'. Pit 129, surface cleaning.

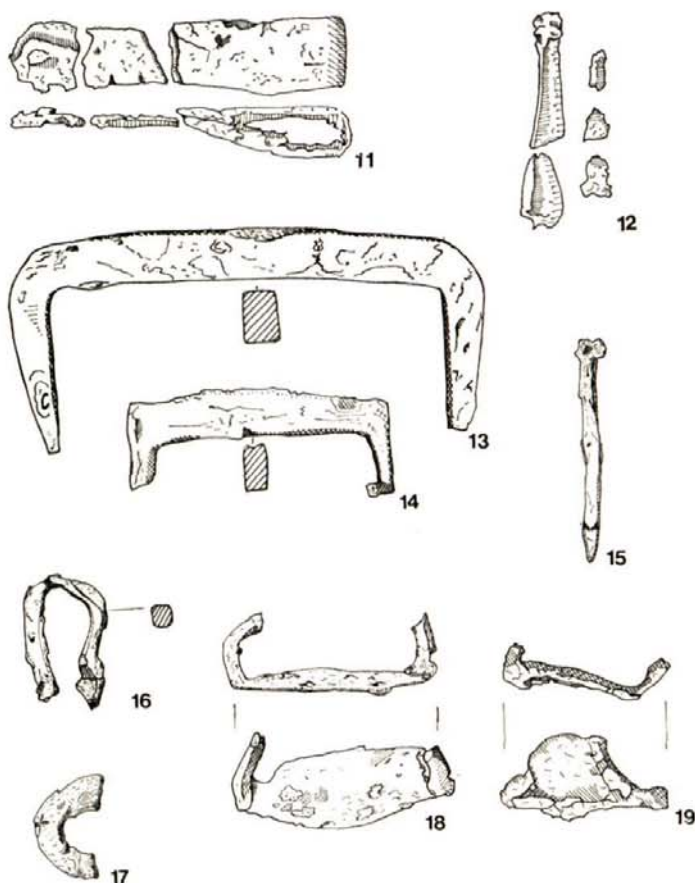


Fig. 24. Ructstalls Hill: Ironwork, Iron Age and early Roman. Scale $\frac{1}{2}$.

15. Nail, narrow square section. Ditch 1.2, phase IIC. Nails also occurred in ditches 2, 5 and 131.
16. Curved piece of bar, flat. Ditch 1.2, phase IIC.
17. Loop of square-sectioned bar. Pit 106.1. Period III.
18. Boot seg or 'blakey'. Hob nails found nearby. Ditch 64.2, Period III.
19. Boot seg or 'blakey', smaller than 18. Ditch 66.2, Period III.
20. Large, square-sectioned timber nail. Pit 97.1. Period III.
21. Large square-sectioned timber nail. Ditch 62.3, Period III. (Similar nails occurred in ditch 64 and pits 95, 97, 106, 213).
22. Hob nail, from boot or shoe. Ditch 62.2, Period III.

Single nails and groups of up to 23 from other Period III features: ditches 64 and 66, pits 95, 97, 106, 203, 213, 220.

23. Ox goad, cylindrical piece of iron for mounting on stick. Pit 203.3, Period III.
24. Dividers or compasses, in good condition. Pit 203, Period III. (Fig. 26).

The stoutness of their design suggests that these dividers were for use by a mason or builder rather than a draughtsman. Mr W. H. Manning, who kindly gave us details of other dividers, pointed out that the pierced bolt on the Ructstalls Hill dividers would almost certainly have held an iron wedge, although this was not found.

Five sets of dividers were found at Silchester. Two of these had a wedge in the bolt (Table 3, nos. 2 and 3, accn. nos. 07760 and 07762), two others may show a different, double-headed arrangement (Table 3, nos. 4 and 5, accn. nos. 07761 and 07763) while on the fifth it is impossible to tell how they were locked in position (Table 3, no. 6, Silchester site museum). Like the Ructstalls Hill dividers, nos. 2 and 4 were fourth century in date (from the 1900 hoard of ironwork found in a well, Hope and Fox 1901, 247). The dividers from the Saxon Shore fort at Richborough (Table 3, no. 7) appear to be unstratified, 'Found while stripping the top three feet of the north east corner of the stone fort' (Bushe-Fox 1949, 154). Although the Richborough dividers are less complete than the Ructstalls Hill pair, they were probably similar in length and solidity of design, but they are double-headed and the bolt is not pierced to take a wedge.

Other dividers have been found at Caerwent (Table 3, no. 8, second to fourth century AD, Martin and Ashby 1901, 315), Rushall Down

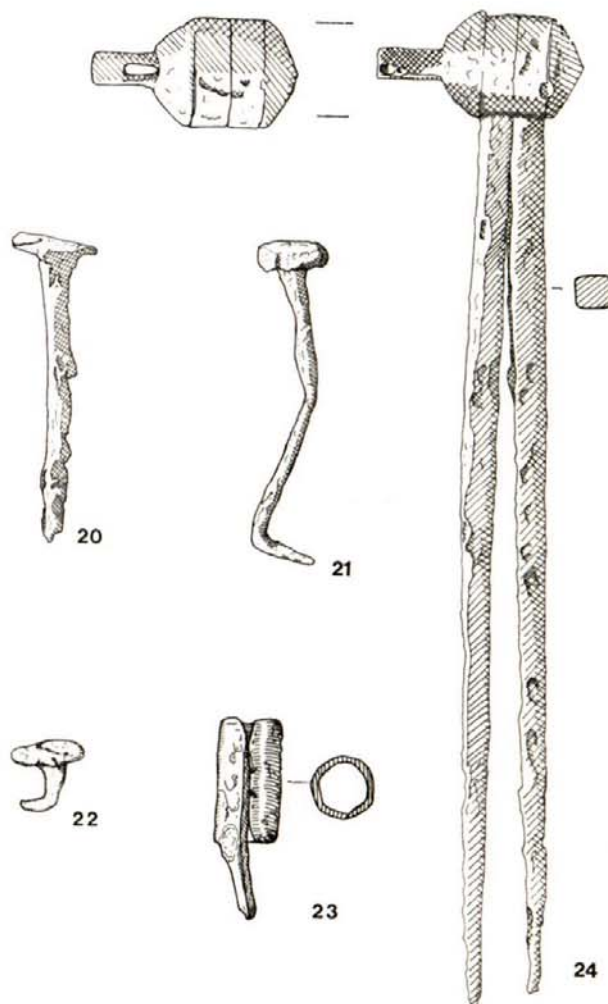


Fig. 25. Ructstalls Hill: Ironwork, late Roman. Scale $\frac{3}{8}$.

Table 3, no. 9, Cunington and Goddard 1934, pl. LXXVIII, 1) dated as 'Roman(?)' and compared with those from Silchester; Bluebell Hill, Aylesford (Table 3, no. 10, 1830's undated find, Maidstone Museum) and the Walbrook (Table 3, no. 11, Museum of London accn. no. 13669 and Table 3, no. 12, accn. no. 19572, probably early second century AD).

The sophistication of the Ructstalls Hill dividers is unexpected in the context of the site and suggests tantalisingly that the main centre of fourth century occupation has not been discovered.

TABLE 3: Details of dividers from Romano British Sites.

Site	Length	Width of arms at boss	Thickness of arms	Locking	Date
1	200 mm	8.0 mm	5-6 mm	pierced bolt, wedge missing	4th century A.D.
2	147 mm	5.0 mm	5.0 mm	iron wedge in pin	late 4th century A.D.
3	162 mm	7.6 mm	10 mm	wedge in pin?	?
4	182 mm	12.7 mm	10 mm	double head?	late 4th century?
5	106 mm	7.6 mm	10 mm	double head	?
6	129 mm	c 6.0 mm	c 4-6 mm (flaking)	?	?
7	188 mm	8.5 mm	6.5 mm	double head	?
8	106 mm	8.0 mm	c 4 mm (distorted)	hinge, bolt missing	2nd to 4th centuries
9	154 mm	c 4 mm	?	iron bolt	?
10	124 mm	incomplete	?	?	pre-Roman to Arcadius
11	139 mm	6.0 mm	3-4 mm	double headed	probably early 2nd century
12	327 mm	16 mm	8 mm	double headed	probably early 2nd century

BONE (Fig. 27)

25. Piece of polished bone, decorated with ring and dot and parallel line incisions, which probably formed part of a knife handle. Found in association with 26. The bone showed signs of burning, which may have caused slight warping. Ring and dot decoration is often found on bone weaving combs. Pit 81.4, phase IB.
26. Piece of polished bone, decorated with incised parallel grooves, probably part of a handle. Found with 25 and several smaller pieces which may have been connected. The burning has distorted the shape slightly, which makes it difficult to reconstruct the fragments. Pit 81.4, phase IB.
27. Bone point, made from horse cannon bone, no boring or rivet holes. Pit 126.1, phase IA.
28. Piece of ox cannon bone, trimmed to form a handle. Slight grooves have been worn in the bone, where the blade or tool would have been bound to it. Pit 83.9, phase IB.
- Similar piece of ox cannon bone, also from pit 83.9, shows chop marks where the bone was split.
29. Bone point, unpierced. Pit 214.8, phase IB.
30. Bone point, very similar to 29 but with point very polished. Pit 92.4, phase IA.
- Other bone points: pit 76.1, phase IB; pit 97.1, Period III layer but probably residual from phase IB; much coarser one from pit 95.1, Period III but including some Period I sherds).
31. Bone pin, polished. Cf Jewry Wall (Kenyon 1948, fig. 90, no. 8), 3rd to 4th century type; Fishbourne (Cunliffe 1971, fig. 68, no. 22).

STONE AND CLAY (Figs. 28, 29)

32. Piece of polished ironstone, possibly used as a hone, broken across the perforation. Pit 83.1, phase IB.
33. Roughly worked chalk disc, with the beginnings of central boring on each side. Probably intended as a spindle whorl but abandoned before completion. Pit 122.5, phase IA.
34. Small spherical, complete but broken brownish baked clay spindle whorl with cylindrical perforation. Pit 119.2, phase IB.
35. Half a baked clay spindle whorl, found with 34.
36. Half a spherical spindle whorl of baked clay, fired harder than 34 or 35. Ditch 198.1, phase IIB.
37. Spindle whorl made from the base of a samian vessel. Ditch 68.1, phase IIB.
38. Complete triangular loomweight made of yellow-orange baked clay with chalk and flint inclusions; cylindrical holes across the corners. One of a group found in Pit 100.2, phase IA. Two were 120 mm across, one 140 mm across, and there were many fragments. Loomweight fragments were also found in phase IA pits 92.4, 109.2, 196.8 and phase IB pit 65.4.
39. Pieces of large triangular loomweight of whitish baked clay, containing a great deal of powdered chalk and large pieces of flint, extremely friable. This loomweight would appear, from the reconstructable fragments, to be unusually large, though the cylindrical holes across the angles are comparable with those on other loomweights from the site. Post hole 88.1, phase IB.

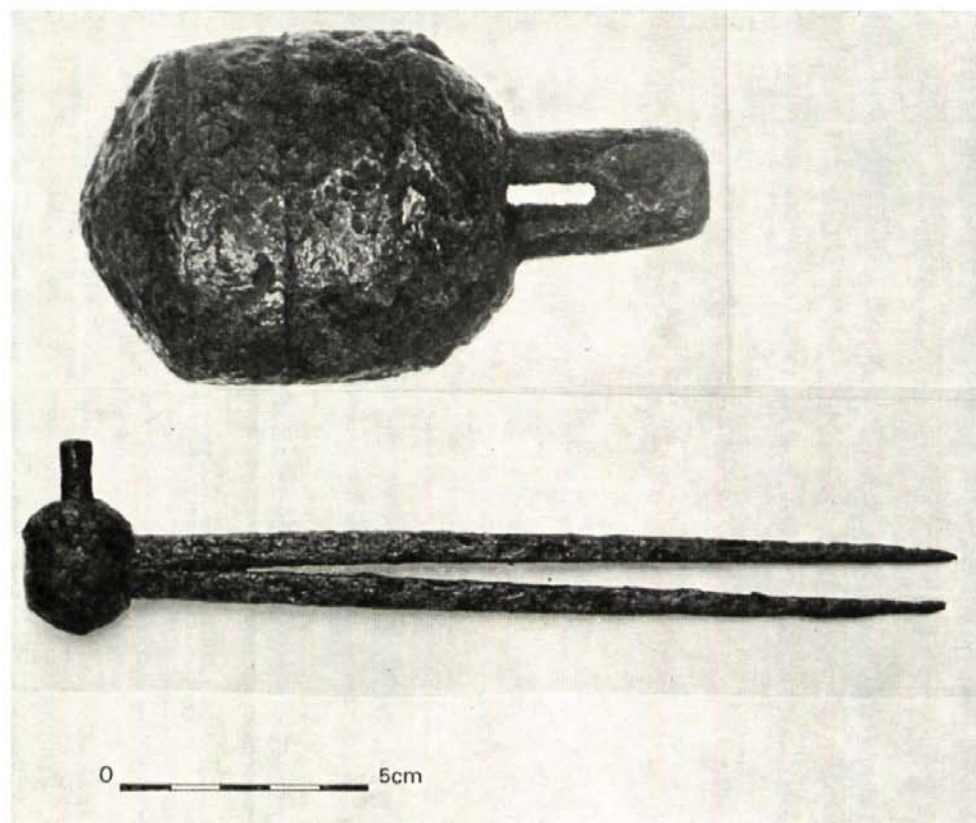


Fig. 26. Ructstalls Hill: Iron dividers, late Roman. Scale $\frac{2}{3}$. Above, head at enlarged scale.

Quernstones and rubbers (Figs. 29 & 30)

40. Sarsen pebble, a natural water-worn cobble, but its concave surface worn artificially by use as a grindstone. Pit 81.5, phase IB.
41. Small sarsen pebble, water-worn but found in association with 40 and probably used as a rubber on the rubbing stone. Other water-worn sarsen cobbles may also have been used as rubbers, from 101.1, 106.1, 149.4, 150.1, 164.1, 196.5 and 220.4.
42. Piece of worked sandstone, the ferruginous gritstone found commonly on the site. Ditch 227, Period III.
43. Top stone of a rotary quern, ferruginous gritstone, found in many pieces, many of them tiny chips and some showing evidence of burning. In association with large quantities of daub with wattle impressions, and iron slag—possibly re-used as part of a furnace structure. Pit 81.3/5, phase IB.
44. Bottom stone of rotary quern, ferruginous gritstone found with 43.
45. Part of bottom stone of quern, of slightly

glaucanitic gritstone of uncertain derivation; concentric grooves visible. Pit 126.1, phase IA.

SLAG

Copper/bronze slag was found in a dateable context only in the Period I ditch (feature 8). Two unstratified concentrations of bronze/copper slag were found in areas D2 and D6, each lying on the chalk surface which retained the impression of a crucible, the second accompanied by a spiral of iron. There was no dating evidence with either find.

Iron slag was found in many features, particularly Period I pits:

Period/Phase	Feature
I	8, 65 81, 94, 100, 109, 150, 179, 193, 214
IIA	—
IIB	11, 61.
IIC	1, 2, 5, 20, 44, 143
III	97 (layer 1, top filling of phase IB pit, so may be of phase IB date)

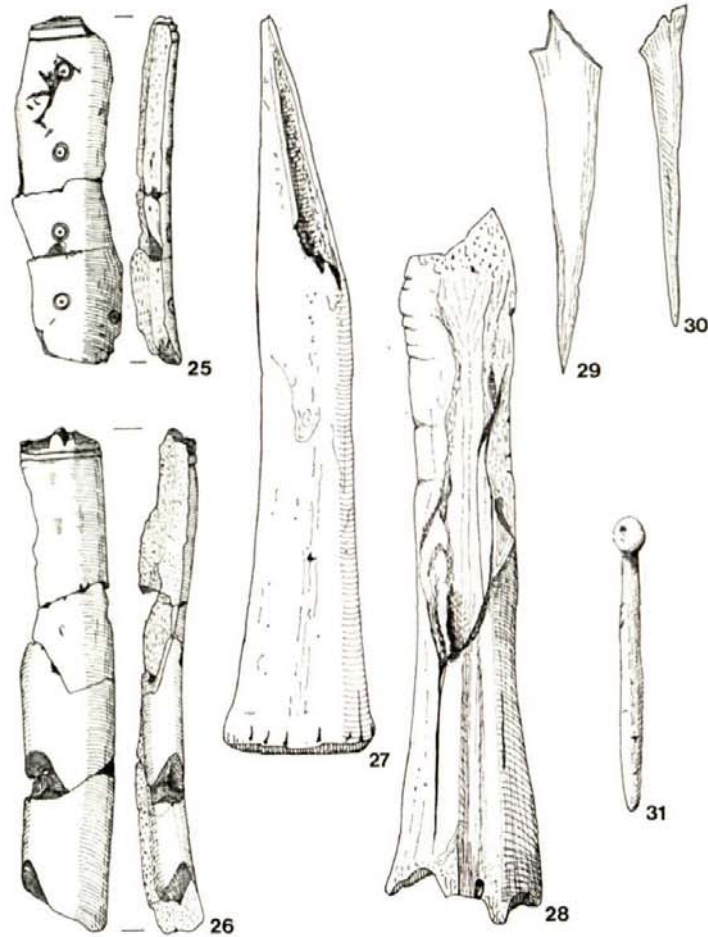


Fig. 27. Ructstalls Hill: Bone objects. Scale $\frac{1}{2}$.

The greatest concentration of slag was in pit 81, amounting to 32 kg, associated with a very large quantity of daub and broken fragments, some burnt, of the top and bottom stones of a rotary quern of grit-stone (Fig. 30, nos. 41-2), suggesting iron smelting close at hand, with the residue of the furnace thrown into this pit. The daub was submitted for analysis, to establish whether it was part of a furnace structure, but it showed no trace of iron.

In order to establish an association or common origin for the iron ore, some slag samples were submitted for milliprobe analysis to F. Schweizer of the Research Laboratory for Archaeology and the History of Art, Oxford, and for instrumental thermal neutron activation analysis to J. Herrington of AWRE, Aldermaston. A full report on the

tests is available in the records of the excavation deposited at the Hampshire County Museum Service. The results were disappointing, owing to the inhomogeneity of the slag.

HUMAN REMAINS

Infant Remains by C. B. Denston and J. Gaitens

Burials 1 and 2: Remains of two infants found together among domestic refuse in the butt end of the phase IIC ditch, F1, including intact long bones and duplicated long bones, broken post-mortem, scapulae, clavicles, vertebrae, ribs and skull fragments. Among the bones were ten crowns of deciduous teeth which suggest two distinct ages at death: *Burial 1*, death at birth or within a few weeks (agreeing with the evidence

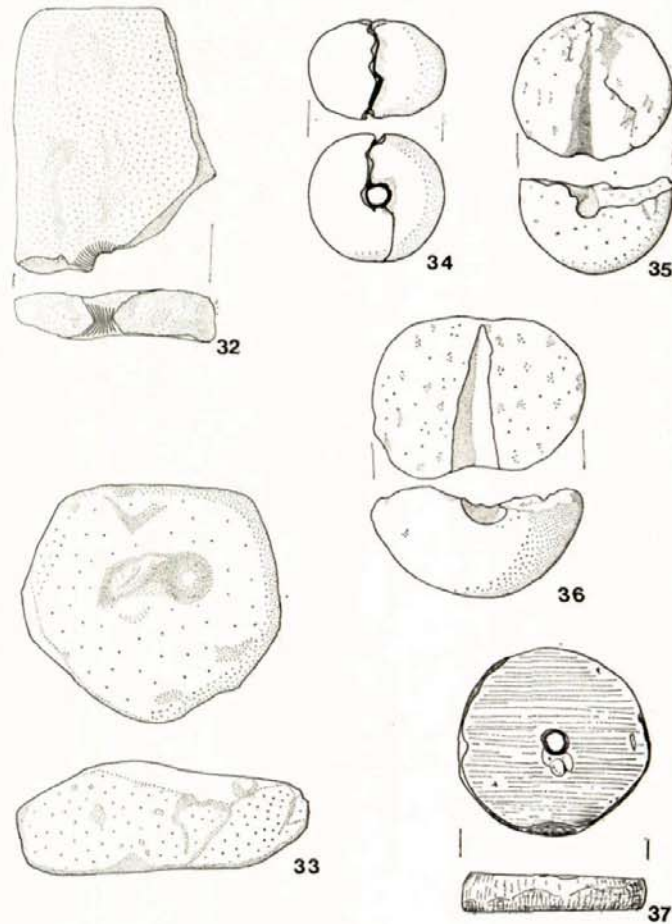


Fig. 28. Ructstalls Hill: Objects of stone and baked clay. Scale $\frac{1}{2}$.

of the tympanic rings of the temporal bones). *Burial 2*, just previous to birth, perhaps in the ninth pre-natal month, possibly a premature birth.

Burial 3: This infant was found in a small hole cut in the bottom of the butt end of the phase IIC ditch, feature 5. The remains were quite well preserved, with skull and postcranial bones present. All the long bones were intact, along with remains of vertebrae, ribs, bones of the hands and feet, scapulae and pelvis. Nearly all the skull was present. The evidence from the amount of formation of the crowns of the deciduous teeth suggests death at about the time of birth or within a few days or weeks thereafter. The features of the skull suggest death within the first two months of the post-natal period. (C.B.D.)

Burial 4: A number of long bones and some skull fragments of one baby were found in the top of pit 97; there was insufficient evidence to determine the age or sex.

Burial 5: A skeleton of a child was found on the bottom of pit 204. From the state of the dentition and the fusion of the epiphyses an age of not more than 4 or 5 years was estimated. Sex was not determined and there were no obvious indications of ill-health or cause of death. (J.G.)

Cremation burials by J. Gaitens

Cremation 1: The urn was shattered, being held together only by the fill. Some fragments of long bone and of skull were recognisable. The maximum size of the bone material was 50 mm and the minimum recognisable 12 mm. This was

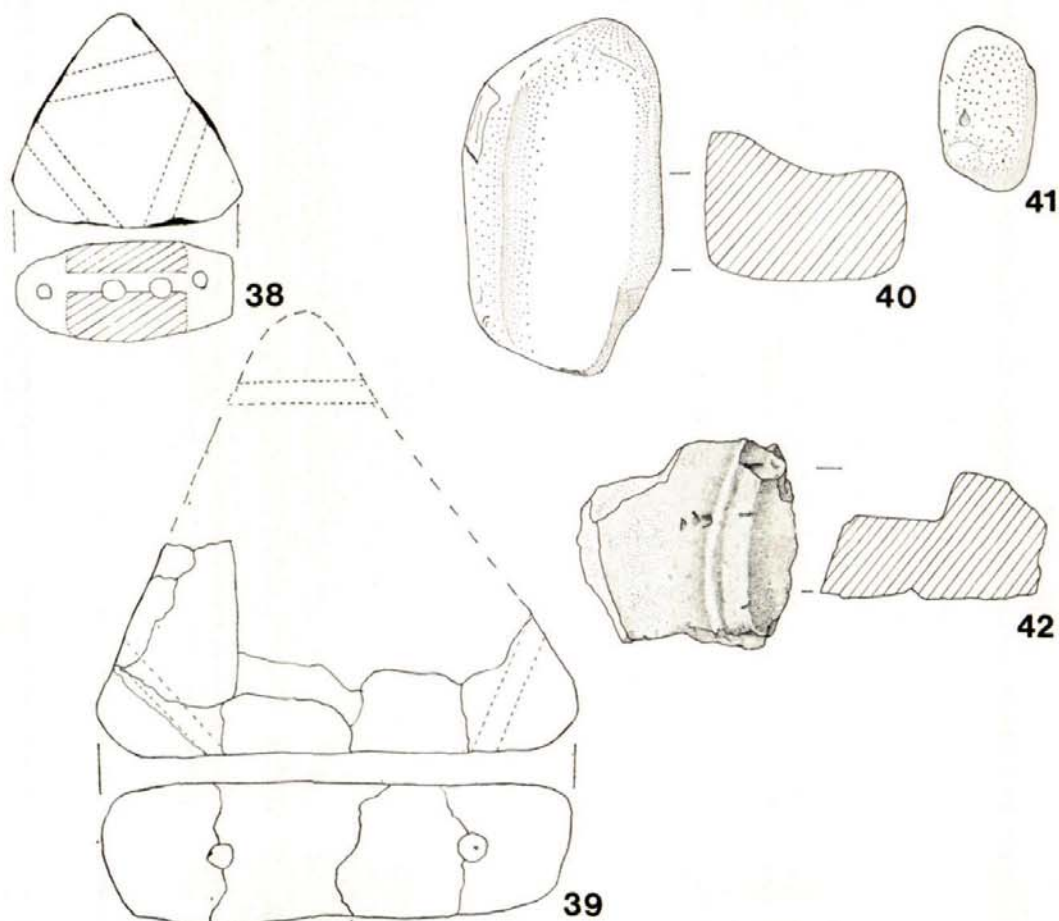


Fig. 29. Ructstalls Hill: Objects of stone and baked clay. Scale $\frac{1}{4}$.

probably a young adult male, over the age of 20 years. Pit 248, layer 2, Period II.

Cremation 2: The urn (Fig. 19, no. 60) was nearly intact, and contained fragments of long bones—humerus, femur, tibia and fibula, from a young adult, possibly female and over 25 years old (humerus fused). Most of the bone was too charred and fragmentary for further determination. Pit 248, layer 2, Period II.

In both cases identification of sex is tentative, based on comparison of thickness of bone fragments from skull and long bones.

ANIMAL BONES by Iris Gregory

A total of 3,020 bone fragments from the site was examined, of which 1,591 were identified into species: domestic species, red and roe deer. The

bones not identified consisted of ribs, vertebrae, long bone fragments and skull fragments too small to be positively identified.

Approximately half of the material was extremely fragmented, although the bones from the pits and some ditch deposits were in a good state of preservation. The texture of the bones from surface deposits was soft and chalky and the surfaces eroded and pitted.

Because of the fragmentary condition of the bone and the small quantity from each feature, the minimum number of individuals (M.N.I.) represented in each separate phase of occupation was calculated by the size and fusion stages of the epiphyses of the long bones as well as the stages of tooth eruption in the mandibles. Silver's data (Silver 1969) were used to classify the fusion

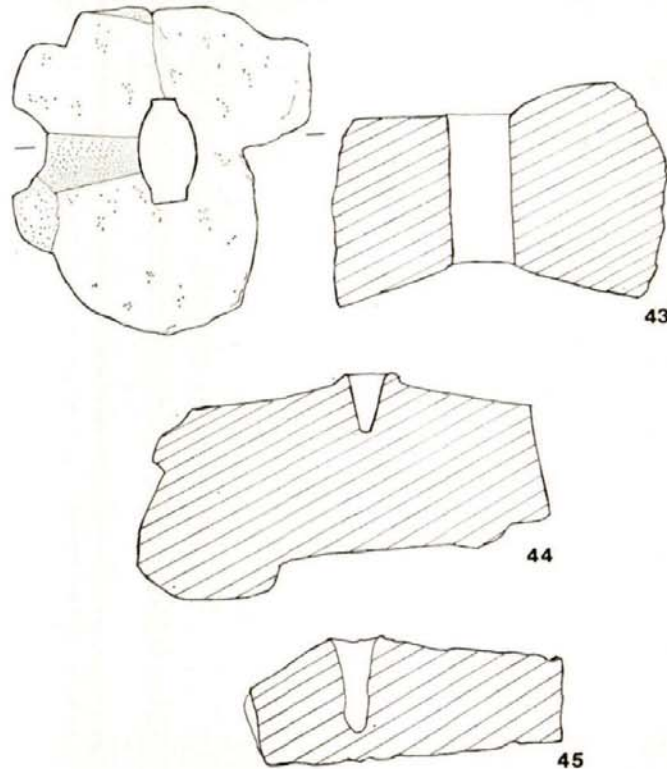


Fig. 30. Ructstalls Hill: Rotary querstone fragments. Scale $\frac{1}{4}$.

states of the bone and the tooth eruption in the mandibles. Table 4 shows the comparative percentage of species represented throughout the three main phases of occupation and the minimum number of individuals present.

Measurements: Detailed measurements are contained in the full report deposited at the Hampshire County Museum Service. All the measurements are in millimetres and those of the extremities of the long bones taken across the articular surfaces. The mid-shaft diameters (m.s.d.) are taken at the minimum width obtainable across the shaft. Molar rows are measured from the anterior alveolar margin of the first premolar to the posterior point of the alveolar margin of the third molar.

Period I: Iron Age

The species represented in Period I were sheep/goat, cattle, pig, horse, dog and red deer. A total number of 1,460 bones were examined, of which 781 could be identified into species.

Sheep (*Ovis aries*)/Goat (*Capra hircus*):

The most numerous species present throughout Period I was the sheep. One horn core could be positively identified as belonging to goat, although no other bones from this species were recognised. The greatest number of sheep bones was from pit 83. A minimum number of twenty-two animals was determined from this feature (the most recurrent bone, the mandible, was used to calculate the M.N.I. and age at death). Twelve animals showed the first molar erupting. Using Silver's data, this would give the age at death of the animals as approximately six months (using figures for wild hill sheep) or three months (using the data for modern breeds of sheep). Six of the animals were fully adult, the third lower molars showing varying patterns of wear. Four of the animals could not be aged, because either the diastemas only were present, or the teeth were missing from the jaws. However, from the size and appearance of the mandibles they were more likely to belong to the earlier age range.

Twenty-two of the Iron Age animals were adult at death, fourteen had reached the stage when the third lower molars were erupting and the deciduous fourth pre-molars were still in situ. Twelve were not categorised. A small quantity of under-developed bones with no epiphyses fused could be attributed to three foetal animals. The condition of the skulls was extremely fragmentary but from cranial fragments examined there was no evidence of hornless animals.

Cattle (*Bos longifrons*)

The minimum number of animals represented was nine. Using Silver's data, seven of the animals were fully mature, one animal was still a weanling, the first permanent molar in the process of erupting, and one animal had reached the juvenile stage of its development, the mandible having the second permanent molar in wear and the fourth deciduous premolar still in situ. One of the mandibles (pit 83) showed a shortened molar row, the permanent second pre-molar being absent. Few of the long bones were complete. All bones were of similar proportions; the only specimen contrasting in size was that of a tibia (from feature 3, one of the earliest Iron Age deposits) with a distal measurement of 67 mm, the minimum shaft diameter being 45 mm. Unfortunately, the proximal end of the shaft was broken. For comparison, the only other measurable tibia from Period I measured 52 mm distal width, with a minimum shaft diameter of 32 mm. However, although the existence of a specimen of a somewhat larger form is curious, the same phenomenon has been observed by Jewell on Bronze Age and Iron Age sites (Jewell 1962).

The skull of a 'polled' animal was found in feature 234. Polled cattle occur in the Iron Age, as a variant of the Celtic Ox. The skulls of hornless animals were found at All Cannings Cross and Swallowcliff Down (Armitage and Clutton-Brock 1976). The skull from All Cannings Cross like that from Ructstalls Hill has a very prominent medial eminence on the poll.

Pig (*Sus scrofa*)

The remains of pig were scarce throughout the Period I occupation of the site (a minimum number of six animals only being represented). Two mandibles showed the second molar in wear and the third molar erupting and one mandible showed the third molar visible only through the crypt of the jaw. One mandible contained a male canine. A small number of underdeveloped bones could be attributed to two neonate animals.

Horse (*Equus caballus*)

The remains of three individuals were represented. All the bones were from mature animals. The remains of a complete skull (too fragmentary for measurement) were found in pit 154.

Dog (*Canis familiaris*)

The remains of two mature animals were represented by three mandibles. Two of these, from feature 196, layer 5, matched. The length of the mandibular tooth row was 78 mm, the length of the first permanent molar being 24 mm. The mandible from pit 83 was not complete.

Red Deer (*Cervus elaphus*)

This animal was represented by a broken antler and frontal bones with antlers attached. The first antler, from feature 3, one of the earliest Iron Age features, possibly had been used as a pick. The antlers attached to the frontal bones (from pit 150) had had the brow tines sawn off. The main right beam had also been sawn and saw marks appeared on the main beam of the left antler. Red deer shed their antlers annually in March or April, therefore the presence of antlers attached to frontal bones suggests that the animal had been killed or died naturally between September and March before the antlers could be shed.

Butchery: Very few signs of butchery were recognised on sheep, with the exception of two tibiae chopped horizontally just above the mid-shaft level. Fine cut marks were found on several sheep ribs, a sacrum and an atlas.

A few cattle bones showed signs of butchery. There were transverse cuts on the neck of a scapula, which had a perforation in the blade shaft. There were slight cut marks on the shaft of two distal humeri. Cut marks also appeared on the distal shaft of a tibia and on the proximal shaft of a m/tarsal. Two m/tarsals from pit 83 had been chopped half way through the mid-shafts and the interior surfaces worn smooth: possibly these bones could have been used as handles for some unidentified implements or as scoops. Ribs showed signs of transverse cut marks and one mandible had been chopped across the ramus from the coronoid process to the third molar.

Pathology: All the animals appeared healthy, the only anomalies being the two horse phalanges showing signs of arthritis and a cow mandible from pit 83 which had a shortened molar row.

Period II: early Roman

Sheep, cattle, pig, horse and dog were present throughout the early Roman phase of occupation. A total of 1,102 fragments was examined, of which 598 were identified to species. The bones were in an extremely brittle state of preservation and very few of the bones were whole.

Sheep/goat

Despite the number of fragments (246) there were no complete bones. From the fragments examined, none of the bones could positively be

Cattle

By far the most numerous remains were from cattle. Ten individuals appeared to be represented. There were the remains of two mature animals and one calf from feature 213. Most of the bones from the calf were present. There were articulating bones from mature animals in feature 64. One fully mature radius was noticeably smaller and less robust than the other two radii. The varying diameters of the shafts of the long bones and lengths of the bone could indicate both sexes were present, as well as a variation in the breed of the animal.

Horse

Four specimens represented two individuals. Their measurements suggest that one animal measured approximately $13\frac{1}{2}$ hands, the other just under 13 hands.

Dog

Only a few specimens, mostly fragmentary, indicated a minimum number of two animals.

Roe deer (*Capreolus capreolus*)

The only roe deer specimen was from a broken mandible, the deciduous fourth pre-molar being the one tooth still in situ.

Pathology: Three specimens of ox ulnae were fused to the radii, indicating the aged condition of the animals. One first phalanx showed signs of arthritis.

Undated

The foetal remains of a lamb, together with the foetal remains of two pigs, were found in pit 164 which contained no dating material and was not stratigraphically related to any other feature.

Cattle, sheep, horse and dog were present throughout the three main periods of occupation, with pig in Periods I and II and with evidence of red deer during Period I and roe deer during Period III. Sheep were the predominant domestic species throughout Periods I and II but there were few sheep remains during Period III, which might indicate a change in the economy of the site.

Discussion

There was little evidence to suggest that there was any increase in the size of sheep throughout the Iron Age/early Roman phases of settlement. There was a slight increase in the size of the cattle during the later Roman occupation of the site, although evidence suggests cattle of smaller stature were still present. Traditionally it was believed that the Romans imported improved stock into Britain, although there is little evidence to support this belief. It is more likely that an improvement in the methods of stock-rearing and nutrition might account for the

presence of larger animals. The majority of the cattle bones were from older beasts, which shows that the herdsmen were capable of bringing their animals through successive winters.

Small Mammals and Amphibians

Soil samples from most features were washed and examined for environmental evidence by Mr A. C. McLachlan and Mr K. N. Schrapel, Department of Geology, Queen Mary College, University of London. Indeterminate tiny bone fragments were discovered in most samples but more complete remains in some enabled the following animals to be identified by Mr J. N. Carreck of that Department, who added comments on their occurrence, as given below.

Bank Vole, *Clethrionomys glareolus* (Schreber)
Field Vole, *Microtus agrestis* (Linné)
Water Vole, *Arvicola amphibius* (Linné)
Long-tailed Field Mouse, *Apodemus sylvaticus* (Linné)
Common Shrew, *Sorex araneus* (Linné)
Water Shrew, *Neomys fodiens* (Schreber)
Common Frog, *Rana temporaria* (Linné)

A concentration of remains of small mammals and frogs (and notably the only examples of the Water Vole and the Water Shrew) were found among food debris bones in the lowest levels of the Period I pit, 94. This seems to indicate that the pit contained water into which the animals fell when coming to drink, or their remains were washed in by rain, but possibly some of the remains could be from owl pellets.

Most of the small animal bones were recovered from Period I features:

Field Mouse (pit 125); Field Vole (pits 81, 94); Water Vole (pit 94); Mouse and/or Vole (pits 65, 81, 92, 94, 95, 103, 119, 125, 214); Common Shrew (pits 92, 94); Water Shrew (pit 94); Common Frog (pits 65, 81, 92, 94, 100).

Small animals from Period II features were:

Bank Vole (ditch 68); Field Mouse (pit 149); Field Vole (pit 149); Mouse/Vole (pit 148).

Small animals from Period III features were:

Bank Vole (pit 203); Field Mouse (pit 203); Field Vole (pit 203); Mouse/Vole (ditch 62, pits 95, 203); Common Frog (pits 95, 203).

It is notable that no bird or fish bones were recovered from the site.

SNAILS

(based on identification by Mr N. Bradford. A full list is included in the excavation records held by the Hampshire County Museum Service). The Iron Age pits yielded very few snails, not enough for statistical use. The slug *Limax*, of

which the internal shells remain, and the common damp-loving species *Trichia striolata* (C. Pfeiffer) and *Oxychilus cellarius* (Müller) were best represented, also *Helicella itala* (Linné) which favours dry chalk-soil vegetation. The shells of the 'Coffin Snail' *Caecilioides acicula* (Müller) were also present in large numbers though these are probably modern intrusions.

Only two Period II features contained snail shells (14 shells in all). By far the greatest number was recovered from Period III features, especially the upper levels of the ditch (features 62, 64, 66) and pit 203. The thicker vegetation which would grow over the partly filled-in features was reflected in the snail and slug species which were mostly damp-loving.

PLANT REMAINS (based on identification by Mr F. Green)

Unfortunately most of the plant remains which were isolated in the soil-washing were lost in the post. Of the rest only two were ancient: a carbonised hazel nut (*Corylus*) from pit 65.3 and one seed of the family *Caryophyllaceae* (campion type) from ditch 62.10. The remainder proved to be either *Chenopodium album* ('fat hen') or *Polygonum* (dock family) of recent origins. Mr McLachlan reports the apparent total absence of cereal grains in all the soil samples examined by him in the laboratory.

Charcoal

Many tiny fragments were found, predominantly in the Period I pit levels. Larger samples await possible identification.

ROCK SPECIMENS FROM EXCAVATED FEATURES (based on information from Mr J. N. Carreck, Dr F. A. Middlemiss and Mr E. G. Stokes)

Sandstone: By far the most commonly found rock (with the exception of flint) was a ferruginous gritstone of Lower Greensand type, possibly from the Hythe Beds, which now outcrops around Rogate, ca 32 km south-east, and in the Vale of Pewsey, ca 64 km west. There were several variants of the same basic rock type, and it was found in all sizes: tiny fragments were recovered during the washing of soil samples; small, broken fragments, giving the appearance of being naturally weathered, were found in many of the features; and some large pieces, clearly used by man, were recovered, including the reconstructable top and bottom stones of a rotary quern from pit 81 (Fig. 28, nos. 43 and 44). The frequent presence of this rock might indicate a local origin. There is certainly no local outcrop traceable now, but it presumably occurs in local drift deposits of Pleistocene age and could be

transported by ancient river action from a distance. The rock also occurs at other excavated sites in the Basingstoke area (Oakridge, Common Plantation, Buckskin, Viables, Winklebury, Fig. 1), which may support a more local source. In some cases large worked pieces may have been carried a considerable distance by man in Iron Age and Roman times.

This rock was contained in 16 features of Period I, 14 of Period II and 10 of Period III; there were 4 undated examples.

Small specimens of nine other gritstones were found, mostly of fairly local origin.

Sarsen: Sarsen was much less commonly found than sandstone. It is a very difficult rock to work, owing to the infiltration of the sandstone by silica. Many of the pieces were waterworn and a few showed evidence of working (e.g. Fig. 27, nos. 40, 41, from pit 81). Even the unworked pieces may well have been used as weights or building stones.

Sarsen was found in 7 features of Period I, 1 of Period II and 3 of Period III, with one undated example.

Ironstone: Pieces of ironstone were very common. This Tertiary or Lower Greensand rock would have come from the same area as the gritstone. It was often found in tabular form and was occasionally worked (e.g. Fig. 26, no. 32 from pit 83). Ironstone was found in 9 features of Period I, 5 of Period II and 7 of Period III, with two undated examples.

Tufa: Two pieces of calcareous tufa (a soft limestone) were recovered from features 2, Period II, and 13, Period I. This is formed in small quantities by streams or springs rich in dissolved calcium carbonate. Deposition must have taken place very near the site, most likely at the Black Dam spring, the presumed water source for the site.

Jurassic Limestone: There are two samples of Jurassic limestone from Period III: one sample is a thin tabular type resembling that found at Stonesfield, Oxfordshire and may have been used as a roofing tile; the other is a large fragment of oolitic limestone from the Jurassic outcrop, the nearest sources being Dorset, Wiltshire or possibly Oxfordshire.

Implications: The rocks found at Ructstalls Hill are mostly of rather uncertain geological age, and not closely traceable to their original outcrops. However, they would mostly seem to be available within a 32 km radius of the site. The quantity of Lower Greensand gritstone recovered, especially from Iron Age features, may even suggest a source

nearer than 32 km. The only fragments of more distant origin, Jurassic limestone, came from Roman features of Period III: the improvement in communications and the widespread trade in building stone in the Roman period is reflected, even at such a relatively poor site as Ructstalls Hill.

DISCUSSION

Ructstalls Hill proved to be an Iron Age/Romano-British farming settlement, with post holes of huts and other structures, pits and boundary ditches. The three main periods of occupation were Iron Age, early Roman and later Roman. Its initial Period IA boundary was probably a fairly temporary one, followed by a more substantial Period I boundary as the settlement became established. After a break of about a century the site was re-occupied for an early Roman phase in which the settlement may have been associated in some family relationship with the adjacent Common Plantation (Fig. 1). Then again, after a further break, occupation was resumed on a small scale in the late 3rd/early 4th centuries AD, possibly as part of a larger complex.

Five possible circular structures can be identified, of which four are probably Period I and the fifth may be Period II, while further post holes represent a rectangular structure of Period III. There would almost certainly have been at least one building for Period II because of the amount of domestic refuse, the complexity of the enclosure and the time span indicated by the pottery. There may have been other structures in all phases which left no archaeological trace, for instance using sleeper walls or beams set on topsoil—at the Butser Iron Age Experimental Farm a hut of turf walls was built without leaving any post holes.

The 4-post and 6-post settings of Period I are capable of many possible interpretations (Ellison and Drewett 1971). By comparison with post holes on similar sites, e.g. Owslebury (Collis 1970) and Gussage All Saints (Wainwright and Spratling 1973), these

appeared rather shallow, perhaps due to surface erosion on the hillside. It seems that in a farming settlement such as Ructstalls Hill an agricultural function such as a granary or storage barn would be most likely; however, the structure in A1 was oddly sited just inside the eastern entrance to the Period I enclosure ditch, if it is to be interpreted as a storage barn or, being on the downward slope, as a watchtower. Possibly some of the remaining post holes can be explained in terms of looms, hurdles, haystacks, tethering posts, retaining posts and other farmyard structures (Reynolds 1976, 21, 28–29, 45).

Various functions can be suggested for a number of Period I pits which have been classified according to profile. Far fewer pits belonged to Periods II and III. Period I pits often had top-filling of the later phases. It is assumed that pits fulfilled many functions in the Iron Age economy: for storing such things as seed-corn, salted meat, beans, clay or water and for the manufacture of silage (Reynolds 1976, 21, 41–43). The lowest levels of pit 94 contained a large deposit of small mammal bones, including mouse, which may indicate that these animals had been foraging residual grains from a grain-storage pit; however, John Carreck, reporting on the small mammal bones, suggests that as the small mammals in this pit also included water vole, water shrew and frog, this might have been a water-filled pit into which the animals might have fallen when coming to drink, and this theory is supported by the irregular profile of the pit and slight traces of clay lining. The irregularly shaped shallow pits (Table 1) may be interpreted as chalk quarries (Collis 1970, 248). Chalk would have been a useful raw material, especially for building purposes and the making of daub and possibly for agricultural purposes.

The considerable quantity of iron slag and some bronze slag are evidence for metalworking in Period I, contrasting with the use of mass-produced metalwork in Periods II and III. Apart from the Period III dividers, which seem a sophisticated instrument for this kind

of site, the pottery and small finds are typical of a modest farming community.

Textile working was represented by loom weights and spindle whorls in Period I and a spindle whorl in Period II but was not indicated in Period III. Quernstones were found in all phases, rotary querns being present from phase IA onward. Most of the Period I pottery was recovered from pits, and the dispersal of sherds suggests that pits were filled with a mixture of domestic refuse from middens. This theory is reinforced by the fragmentary condition of much of the animal bone. In Period II the lack of disused storage pits to take rubbish is another reason for depositing it in the ditch. The contemporary filling of the Period II ditches implies that they were not the prime element in the boundary.

The small find and bone evidence suggests a mixed farming economy reinforced with hunting at least in Periods I and III. There was perhaps a greater proportion of sheep to cattle in Periods I and II. The bone sample for Period III was small but suggested a possible preponderance of cattle.

No proper cemetery was discovered, but one Period I child inhumation and two Period II adult cremations were found, also two babies buried in the filling of the phase IIC enclosure ditch and one baby burial in a small hole in the base of the butt end of the same ditch. They appear to have been disposed of without ceremony, as was apparently common at the time as at Owslebury (Collis 1968, 19) and Common Plantation, Basingstoke (HCMS records). One Period III baby was buried in the top of an Iron Age pit, a situation comparable with that of the fourth century burial at Ashley Terrace, Winchester (Biddle 1965, 333, pl. 67).

Relationships

In its first phase Ructstalls Hill should be seen in relation to the contemporary occupation of the nearby hillfort of Winklebury (Fig. 1, no. 12): the inhabitants of Ructstalls

Hill and similar settlements would presumably have looked to Winklebury as a tribal centre. By this period, when the 6th century BC peak of occupation at Winklebury was past, the pottery there seems to have developed from Kimmeridge-Caburn style to All Cannings Cross-Meon Hill style (Smith 1977 and personal communication; terminology, Cunliffe 1974).

The phase IA pottery at Ructstalls Hill also indicates contact with the All Cannings Cross-Meon Hill group. There is a change of emphasis in phase IB when similarities can be found in the pottery of the St Catherine's Hill-Worthy Down complex 30 km to the south west, but also notably in the Southcote-Blewburton Hill group 30-35 km to the north. More far-reaching contacts are indicated by the briquetage, possibly brought in stages from the coast via the Winchester area.

At the same time there was a change in the relationship between small settlements such as Ructstalls Hill and larger settlements such as the Winklebury hillfort. At Winklebury occupation became more sporadic, probably seasonal, while the smaller settlements became larger and more self-sufficient. The relationship of Ructstalls Hill to other Basingstoke sites at this period should be clarified when the results of recent excavations are published. Brian Perry (1970) refers to two Iron Age sites at Ructstalls Hill, which he compares with Home Croft, Andover, a 'grouped settlement'. These sites are in fact adjacent to Ructstalls Hill rather than on it. As air photographs have revealed more sites in the area, we propose to distinguish them by the following names (Fig. 1):

1. Ructstalls Hill, Basingstoke
2. Common Plantation, Basingstoke
3. Home Farm, Basing
4. 'Larch Plantation', Basing
= Perry's 'Ructstalls Hill'. (Not a true area name but named by us from a striking plantation of larch trees behind it; on the fringe of Oaken Plantation).
5. Oaken Plantation, Basing

It seems likely that the first three sites in particular were closely related. Provisionally it appears that the adjacent Common Plantation site was settled later than the first phase of Ructstalls Hill, but the air photographs of Home Farm and 'Larch Plantation' seem to indicate Iron Age sites. Other contemporary settlements are shown on Fig. 1, at Buckskin I, Oakridge II and Oakridge VII (new housing estates on the outskirts of Basingstoke), Viables, Battledown, Kite Hill and Rooksdown (Basingstoke) and Wellocks Hill, Cowdery's Down and Basing House (Basing). Stray finds from the district as a whole, and evidence from air photographs indicate that the district was well settled, but this apparent density in relation to other areas may simply reflect the amount of recording of sites in the Basingstoke area in recent years during town development.

Ructstalls Hill was apparently not occupied for a period of up to a century before the Period II occupation began some time in the middle of the first century AD. Future work on the excavated material from the adjacent site at Common Plantation may show a similar pattern there, in the Roman period. A preliminary look suggests a wider range of pottery and so perhaps a longer period of occupation. Common Plantation may fill some of the gaps in the occupation of Ructstalls Hill. Home Farm and 'Larch Plantation' have not been worked on, as there is no immediate threat to them, but it would be interesting to see their relationship to Ructstalls Hill and Common Plantation.

Possibly the Roman conquest gave an impetus to renewed settlement in the area. In phase IIA at Ructstalls Hill the settlement boundary was completely re-aligned to give a smaller and more regular enclosure, but this was quickly replaced by a more accurately right-angled enclosure which in turn was divided into two in phase IIC, the ditch of the southern half being deepened. One possible interpretation of this division is that it may reflect the inheritance of the property by two heirs; it might be significant that the two

halves are almost equal. However, the southern half is almost empty of early Roman features, especially post holes, and it may well have been the stockyard, the division of the enclosure reflecting two different functions. The phase IIA length of internal ditch 178/34 adjacent to the eastern entrance may have been related to directing stock into the southern half of the enclosure. A similar division into occupied and 'empty' enclosures occurs at the Portway, Andover (Bowen 1975). Perhaps inheritance and family relationships were reflected in the juxtaposition of Ructstalls Hill, Common Plantation and Home Farm, if they were indeed contemporary in Period II.

By Ructstalls Hill Period II, occupation at Winklebury had almost ceased and the focus of settlement in the area was the Atræbatic capital at Calleva (Silchester) which continued as an administrative centre under Roman rule.

After an interval of 150 to 200 years, during which the inhabitants might have moved to Common Plantation or other sites, occupation was resumed at Ructstalls Hill on a minor scale, Period III. The larger Iron Age enclosure ditch was re-excavated and a rectangular post structure was built within it. Broken roof tiles recovered from the ditch, 35 m away in E7, suggest a fairly substantial building, but the small amount of Roman material indicates either a very temporary occupation or perhaps a specialised function, such as a stockyard with accommodation for the stockman. There is evidence for fourth century occupation at Common Plantation, and during the earthmoving for the M3 motorway a T-shaped corn-drying oven was glimpsed briefly on the north side of Common Plantation (i.e. the Ructstalls Hill side). It seems likely that in this phase Ructstalls Hill and Common Plantation were part of a larger Roman complex of which the centre has not yet been located—a context in which the dividers might seem more appropriate, as well as the few coins, ring, bracelet etc. This complex might also extend to Oaken Plantation where ditches and a wall-footing were

dated to the third and fourth centuries AD. Unfortunately it was not possible for more than a small sample of Oaken Plantation to be excavated before its destruction by the motorway works.

Applebaum (1953) associates the lack of second century sites in the Basingstoke area with the setting up of villas and their large scale farming estates, and the fourth century re-occupation of earlier sites with the leasing out of villa estates. However, the evidence for the villa he cites at Newtown, Basingstoke (Fig. 1, no. 10) is very slight. There is more evidence for one at Oakridge VII, Basingstoke (Fig. 1, no. 9): wall-footings with an apsidal end and flue, plaster and hypocaust pilae. Otherwise villas have not been definitely identified in the area.

Ructstalls Hill seems in many ways to typify the Iron Age-early Roman-later Roman sites of the Basingstoke area. Of the sites revealed and hurriedly sampled during the recent development of Basingstoke (Fig. 1, nos. 2, 5, 9, 13) several showed a similar chronological pattern, sometimes with successive enclosure ditches either overlapping or adjacent. Because these sites were necessarily investigated in such a piecemeal fashion, many questions about their nature and inter-relationships can never be solved. The much more extensive excavation at Ructstalls Hill was undertaken to give as full answers as

possible for at least one such site. It may be that these results can provide a framework of hypothesis on which study of the other sites of the area can be built.

Acknowledgements

Grateful thanks are due for contributions towards the report from Iris Gregory, Duncan Russell, J. Herrington, Janet Richardson, Rosemary Stephenson (the last two under the supervision of M. Fulford), F. Schweizer, C. B. Denston, J. Gaitens, J. Carreck, A. McLachlan, K. N. Schrapel, F. A. Middlemiss, E. G. Stokes, N. Bradford, F. Green.

The Basingstoke Archaeological Society also wishes to thank the site supervisors and other members who gave so much time to excavation and post-excavation work; Sue Offord, Doreen Haddow and Claire Searle for their drawings; the Department of the Environment for allocating a grant of £500 for excavation and a further £500 for post-excavation work; the Borough of Basingstoke (now the Borough of Basingstoke and Deane) for permission to excavate; the Hampshire County Museum Service for undertaking conservation of finds and allocating working space, and in particular Alan Burchard for advice and encouragement; A. Clarke of the Department of the Environment for the survey by fluxgate gradiometer; W. H. Manning of University College, Cardiff, for advice on the dividers; H. C. Bowen, T. Champion, J. Collis, P. Fasham, P. Reynolds, G. J. Wainwright and the Editor for advice on the writing of the report; the Ordnance Survey, Dr J. K. St Joseph, John Bowden and the Fairey Air Surveys for permission to base Fig. 1 on the O.S. map and aerial photographs; Macmillan Education for practical help in preparing the report.

REFERENCES

- Proc.* = *Proc. Hants. Field Club Archaeol. Soc.*
 Applebaum, S 1953 The distribution of the Romano-British population in the Basingstoke area, *Proc.* **18**, 2, 119-38.
 Armitage, P L and Clutton-Brock, J 1976 A system for classification and description of horn cores of cattle from archaeological sites, *J. Archaeol. Sci.* **3**, 329-48.
 Askew, G 1951 *The Coinage of Roman Britain*, London.
 Biddle, M 1965 Excavations at Winchester 1964, third interim report, *Antiq. J.* **45**, 230-64.
 Boon, G C 1969 Belgic and Roman Silchester; the excavations of 1954-8 with an excursus on the early history of Silchester, *Archaeologia*, **102**, 1-81.
 Bowen, H C 1975 Air photography and the development of the landscape in central parts of southern England, in *Aerial reconnaissance for archaeology*, ed D. R. Wilson, Council for British Archaeology Research Report **12**.
 Bushe-Fox, J P 1949 *Fourth report on Excavations of the Roman fort at Richborough, Kent*, Res. Rep. Soc. Antiq. Lond. **16**.
 Clay, R R C 1925 An inhabited site of La Tène I date on Swallowcliffe Down, *Wilt. Archaeol. Mag.* **43**, 59-63.
 Clifford, E M 1961 *Bagendon, A Belgic Oppidum*, Heffer, Cambridge.

- Cohen, H 1880-92 *Description Historique des Monnaies frappées sous l'Empire romain*, 2 ed. Paris.
- Collins, A E P 1953 Excavations on Blewburton Hill, 1948 and 1949, *Berks. Archaeol. J.* **53**, 21-64.
- Collis, J 1968 Excavations at Owslebury, Hants: a first interim report, *Antiq. J.* **48**, 18-31.
- , 1970 Excavations at Owslebury, Hants: a second interim report, *Antiq. J.* **50**, 246-61.
- Cotton, M A 1947 Excavations at Silchester 1938-39, *Archaeologia* **92**, 121-67.
- Cunliffe, B W 1971 *Excavations at Fishbourne: 1961-69, 1 and 2*, Res. Rep. Soc. Antiq. Lond. **26**, 2v
- , 1974 *Iron Age Communities in Britain*, Routledge & Kegan Paul.
- , 1975 *Excavations at Portchester Castle: Vol. I, Roman*, Res. Rep. Soc. Antiq. Lond. **32**.
- Cunnington, M E 1923 *The Early Iron Age Inhabited Site at All Cannings Cross, Devizes*.
- Cunnington, M E and Goddard, E H 1934 *Catalogue of Antiquities in the Museum... at Devizes, Part II*, Devizes.
- Curwen, E and Curwen, E C 1927 Excavations in the Caburn, near Lewes, *Sussex Archaeol. Coll.* **68**, 1-56.
- Ellison, A and Drewett, P 1971 Pits and postholes in the British Early Iron Age: some alternative explanations, *Proc. Prehist. Soc.* **37**, 183-94.
- Frere, S S 1964 Verulamium, three Roman cities, *Antiquity* **38**, 103-113.
- Harding, D W 1974 *The Iron Age in Lowland Britain*, London.
- Hawkes, C F C 1939 Excavations at Quarley Hill, 1938, *Proc.* **14**, 2, 136-94.
- Hill, P V Kent, J P C and Carson, R A G 1972 *Late Roman Bronze Coinage*, London.
- Hope, W H St J and Fox, G E 1901 Excavations on the site of the Roman city at Silchester, Hants, in 1900, *Archaeologia* **57**, 229-56.
- Jewell, P A 1962 Changes in size and type of cattle from prehistoric to medieval times in Britain, *Zeitschr. Tierzüchtung und Züchtungsbiologie* **77**, 159-67.
- Kenyon, K M 1948 *Excavations at the Jewry wall site, Leicester*, Res. Rep. Soc. Antiq. Lond. **15**.
- Leeds, E T 1935 Recent Iron Age discoveries in Oxfordshire and north Berkshire, *Antiq. J.* **15**, 30-41.
- Liddell, D M 1933 Excavations at Meon Hill, *Proc.* **12**, 127-62.
- , 1935 Report on the Hampshire Field Club's excavation at Meon Hill, *Proc.* **13**, 7-54.
- Martin, A T and Ashby, T 1901 Excavations at Caerwent, Monmouthshire, on the site of the Roman city of Venta Silurum, in 1899 and 1901, *Archaeologia*, **57**, 295-316.
- Mattingley, H and Sydenham, E A (eds) 1972 *The Roman Imperial Coinage*, v.5, 2, Probus to Amandus, London.
- Maurice, J 1900 L'Atelier monétaire de Londres (Londinium) pendant la période Constantinienne, *Numism. Chron.* 3 Ser. **20**, 108-47.
- May, T 1916 *The Pottery found at Silchester*, Reading Museum and Art Gallery.
- Perry, B 1970 Iron Age enclosures and settlements on the Hampshire chalklands, *Archaeol. J.* **126**, 29-43.
- Reynolds, P 1976 *Farming in the Iron Age*, Cambridge University Press.
- Richardson, K M 1951 The excavation of Iron Age villages on Boscombe Down West, *Wilts. Archaeol. Mag.* **54**, 123-68.
- Richmond, I 1968 *Hod Hill, Vol. 2, Excavations carried out between 1951 and 1958*, London.
- Silver, I A 1969 The ageing of domestic animals, in *Science in Archaeology*, ed D. R. Brothwell and E. Higgs, London, 283-302.
- Smith, K 1977 The excavation of Winklebury Camp, Basingstoke, Hampshire, *Proc. Prehist. Soc.* **43**, 31-130.
- Wainwright, G J 1970 The excavations of Barksbury Camp, Andover, Hants., *Proc.* **26**, 21-35.
- Wainwright, G J and Spratling, M 1973 The Iron Age settlement of Gussage All Saints, *Antiquity* **47**, 109-130.
- Wheeler, R E M and T V 1932 *Report on the excavation of the Roman and prehistoric and post-Roman site in Lydney Park, Gloucestershire*, Res. Rep. Soc. Antiq. Lond. **9**.
- , 1936 *Verulamium, A Belgic and two Roman cities*, Res. Rep. Soc. Antiq. Lond. **11**.
- White, H J O 1909 *The Geology of the country round Basingstoke*, Geol. Survey England and Wales.

Authors: Barbara Applin, 138 Old Kempshott Lane, Basingstoke, Hants.
Mary Oliver, 3 Milkingpen Lane, Old Basing, Basingstoke, Hants.

This report is published with the aid of a grant from the Department of the Environment. Crown Copyright is reserved in respect of material in it resulting from public expenditure.

© Hampshire Field Club & Archaeological Society.