

A LATE SAXON STRAP-END FROM ANDOVER, HANTS.

By DAVID A. HINTON

DURING the recent excavation at Old Down Farm, near Andover, a small bronze strap-end was given to the supervisor, Susan Davies, by a gentleman who had discovered it in a nearby field (the precise location is not given here for fear of unscrupulous metal-detectors).

The strap-end is 32mm. long (Fig. 2). One end is slightly broken, and has crudely incised decoration of diagonal crossed lines, behind which are two segmental incisions with a straight line between them—these form a rudimentary animal head seen from above. The other end is split to receive a small ribbon or strap, which would have been secured by two rivets in the now damaged attachment holes. An incised cone—a vestigial leaf—emerges from between the holes. The main ornament is contained in a sub-rectangular panel framing two symmetrical, confronted creatures. Each has a nose, eye, a nicked ear, and a short body which ends in a hip and leg with a nicked foot. Chevron lines act as space-fillers at the two ends of the panel. The back of the strap-end is plain.

The strap-end belongs to a type common in the ninth century, found in such coin-dated hoards as that from Trewhiddle, Cornwall, from which the style of animal decoration takes its name (Wilson and Blunt 1961). The neat, symmetrical pairing of the animals in the main panel is comparable to the designs on a strap-end from Cuerdale, Lancs., in a hoard deposited *c.*903, and on another, an unassociated find, from near Cirencester, Glos. (Wilson 1964, nos. 13, 82).

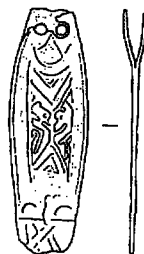


Fig. 2. Late Saxon strap-end from Andover.
Scale 1:1. Drawn by Nick Griffiths.

More than a hundred strap-ends of this sort are known, several having been found since Wilson listed them (Wilson and Blunt 1961, 120–2). One recent discovery in Hampshire was in a grave, at Bedhampton (Rudkin in Webster and Cherry 1975, 222, Pl. xvi, B), but very few come from an excavated context, and they are usually casual finds like the Andover example (e.g. Dallas 1975).

It remains to be seen if the Andover strap-end marks an occupation site; although intensive field-work by Mr. Max Dacre and members of the Andover Archaeological Society has produced a substantial body of evidence about the pagan Saxon period, later sites have proved elusive (Dacre and Warmington 1977, 22), and this strap-end is therefore welcome as the first archaeological piece of Andover's history in the Christian era. It is at present in the teaching collection of the Department of Archaeology at Southampton.

NOTES

REFERENCES

- Dacre, M and Warmington, R 1977 Saxon site at Charlton, Andover, *Hampshire Field Club Newsletter* 7, 22.
- Dallas, C 1975 An Anglo-Saxon strap-end from Bulwick, Northants. *Durobrivae* 3, 28.
- Webster, L E and Cherry, J 1975 Medieval Britain in 1974, *Med. Archaeol.* 19, 220-60.
- Wilson, D M 1964 *Anglo-Saxon Ornamental Metal-work 700-1100 in the British Museum*, London.
- Wilson, D M and Blunt, C E 1961 The Trewiddle Hoard, *Archaeologia* 98, 75-112.
- Author:* D. A. Hinton, Department of Archaeology, University of Southampton.

A NOTE ON THE ANGLO-SAXON CHURCH AT BOARHUNT

By MICHAEL HARE

BOARHUNT church (Grid Ref. SU 603083) stands about two miles north-east of Fareham. It is a simple two-cell building, consisting of a nave and square-ended chancel (Fig. 3). The chancel measures 15 ft 3 in. (4.65 m) long by 14 ft 9 in. (4.50 m) wide internally, while the nave is 41 ft. (12.50 m) long by 19 ft. (5.79 m) wide. The late Saxon date of the major part of the fabric is demonstrated by the stripwork round the chancel-arch, the double-splayed window in the N wall of the chancel and the pilaster-strip in the E wall of the chancel.

A full account of the church was published in the last century by J. T. Irvine (Irvine 1877; see also Taylor and Taylor 1965, 76-8). Irvine drew attention to the scars visible in the N and S walls of the nave indicating the former existence of a cross-wall 12 ft. (3.66 m) from the W end of the nave. He argued for the existence of a W chamber of Anglo-Saxon date occupying the W third of the nave, and suggested that the cross-wall was subsequently pulled down and the chamber opened up to the body of the nave. It is difficult to find parallels for this W structure, but Boarhunt is usually grouped with several other churches thought to have had a W chamber of Anglo-Saxon date such as Dagingworth (Gloucs), South Elmham (Suffolk)

and Northchurch (Herts) (Baldwin Brown 1925, 341-5). On close examination these churches do not prove to bear any close resemblance to one another; their principal similarity is that they are each thought to have had some form of W structure of the same width as the nave. In each case the form and function of the annexes is open to dispute, and these parallels are of dubious value. The evidence for any W structure of this kind should therefore be subjected to careful examination. It is the contention of the present writer that Irvine was mistaken in his interpretation of Boarhunt church, and that the cross-wall was in fact the original W wall of a nave measuring 27 ft. (8.23 m) in internal length. At a later date, probably in the thirteenth century, the nave was extended westwards and the original W wall was removed.

The principal evidence is that provided by the internal quoining. Internal quoining is the technique used mainly in flint buildings of constructing not only the external but also the internal angles in dressed stone. This technique is common in Hampshire and Sussex from the eleventh century onwards. At Boarhunt internal quoining occurs in the four internal angles of the chancel, in the external re-entrant angles between the nave and chancel, and in the E angles of the